

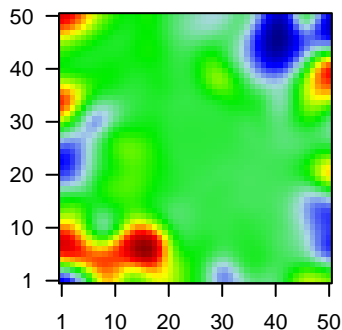
# MPI-249

## Global Summary

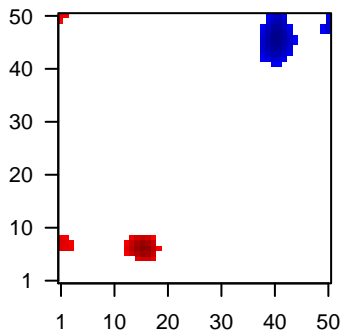
%DE = 0.06  
 # genes with fdr < 0.2 = 792 ( 513 + / 279 -)  
 # genes with fdr < 0.1 = 619 ( 417 + / 202 -)  
 # genes with fdr < 0.05 = 456 ( 316 + / 140 -)  
 # genes with fdr < 0.01 = 278 ( 199 + / 79 -)  
 # genes in genesets = 13152

<FC> = 0  
 <t-score> = 0.05  
 <p-value> = 0.24  
 <fdr> = 0.94

Portrait



Regulated Metagenes



## Global Genelist

Rank	ID	log(FC)	fdr	p-value	Description
1	204372_s_at	-1.56	2e-16	3e-13	40 x 43 KH-type splicing regulatory protein [Source:HGNC Symbol;Acc:HGNC:2510]
2	205051_s_at	2.19	2e-16	3e-13	34 x 3 KIT proto-oncogene receptor tyrosine kinase [Source:HGNC Symbol;Acc:HGNC:2510]
3	205373_at	2.39	2e-16	3e-13	17 x 6 catenin alpha 2 [Source:HGNC Symbol;Acc:HGNC:2510]
4	206023_at	2.18	2e-16	3e-13	33 x 46 neuromedin U [Source:HGNC Symbol;Acc:HGNC:7859]
5	206163_at	2.23	2e-16	3e-13	28 x 37 mab-21 like 1 [Source:HGNC Symbol;Acc:HGNC:6757]
6	206219_s_at	-1.48	2e-16	3e-13	26 x 48 vav guanine nucleotide exchange factor 1 [Source:HGNC Symbol;Acc:HGNC:2510]
7	206461_x_at	-1.45	2e-16	3e-13	0 x 1 metallothionein 1H [Source:HGNC Symbol;Acc:HGNC:7400]
8	207981_s_at	2.58	2e-16	3e-13	12 x 25 estrogen related receptor gamma [Source:HGNC Symbol;Acc:HGNC:2510]
9	209278_s_at	2.24	2e-16	3e-13	14 x 6 tissue factor pathway inhibitor 2 [Source:HGNC Symbol;Acc:HGNC:2510]
10	217469_at	2.35	2e-16	3e-13	49 x 20 immunoglobulin heavy constant epsilon [Source:HGNC Symbol;Acc:HGNC:2510]
11	218332_at	2.62	2e-16	3e-13	35 x 3 brain expressed X-linked 1 [Source:HGNC Symbol;Acc:HGNC:2510]
12	221467_at	2.1	2e-16	3e-13	45 x 21 melanocortin 4 receptor [Source:HGNC Symbol;Acc:HGNC:2510]
13	221671_x_at	0.83	2e-16	3e-13	0 x 3 immunoglobulin kappa constant [Source:HGNC Symbol;Acc:HGNC:2510]
14	221903_s_at	-1.52	2e-16	3e-13	0 x 11 CYLD lysine 63 deubiquitinase [Source:HGNC Symbol;Acc:HGNC:2510]
15	218510_x_at	2.04	4e-16	2e-12	16 x 6 reticulophagy regulator 1 [Source:HGNC Symbol;Acc:HGNC:2510]
16	220994_s_at	2.03	4e-16	2e-12	0 x 32 syntaxin binding protein 6 [Source:HGNC Symbol;Acc:HGNC:2510]
17	218076_s_at	-1.08	7e-16	9e-12	0 x 22 Rho GTPase activating protein 17 [Source:HGNC Symbol;Acc:HGNC:2510]
18	221501_x_at	-1.38	7e-16	9e-12	49 x 6 nuclear pore complex-interacting protein family member A5 [Source:HGNC Symbol;Acc:HGNC:2510]
19	221651_x_at	0.8	1e-15	1e-11	0 x 3 immunoglobulin kappa constant [Source:HGNC Symbol;Acc:HGNC:2510]
20	213664_at	1.99	2e-15	1e-11	6 x 3 solute carrier family 1 member 1 [Source:HGNC Symbol;Acc:HGNC:2510]

## Global Geneset Analysis

Rank	GSZ	p-value	#all	Geneset
<i>Overexpressed</i>				
1	10.84	NULL	556	Chr Chr X
2	8.65	NULL	16	MF immunoglobulin receptor binding
3	8.07	NULL	4062	Chromatin states naive cells peripheral blood_15_Quies
4	7.89	NULL	7581	Chromatin states Melanocytes
5	7.85	NULL	4214	Chromatin states naive cells peripheral blood_15_Quies
6	7.8	NULL	6114	Chromatin states Fibroblasts
7	7.75	NULL	263	Lymphoid tissue PANG_CD40 6hrs UP
8	7.67	NULL	7078	Chromatin states ESC_Mesoderm
9	7.62	NULL	6244	Chromatin states Fibroblasts
10	7.62	NULL	3106	Chromatin states Colon
11	7.51	NULL	1894	Lymphoid tissue OPP_Poised_promoter
12	7.49	NULL	7583	Chromatin states Skeletal_Muscle
13	7.41	NULL	3540	Chromatin states T regulatory cells peripheral blood_15_Quies
14	7.3	NULL	3616	Chromatin states naive cells peripheral blood_15_Quies
15	7.25	NULL	11	CC immunoglobulin complex, circulating
16	7.2	NULL	8102	Chromatin states Colon
17	7.17	NULL	192	Lymphoid tissue Treg_Dark zone signature
18	7.16	NULL	39	BP B cell receptor signaling pathway
19	6.97	NULL	3819	Chromatin states killer cells peripheral blood_15_Quies
20	6.91	NULL	3089	Chromatin states T regulatory cells peripheral blood_14_ReprPCWk
<i>Underexpressed</i>				
1	-9.87	NULL	728	GSEA C2KRIGE_RESPONSE_TO_TOSEDOSTAT_24HR_DN
2	-8.32	NULL	280	GSEA C2MANALO_HYPOXIA_DN
3	-7.89	NULL	72	GSEA C2SCHUHMACHER_MYC_TARGETS_UP
4	-7.88	NULL	174	BP rRNA processing
5	-7.32	NULL	651	GSEA C2KRIGE_RESPONSE_TO_TOSEDOSTAT_6HR_DN
6	-7.03	NULL	602	Colon Cancer track_CRC_TCGA_corr_R_normal_DN
7	-7.03	NULL	55	HM HALLMARK_MYC_TARGETS_V2
8	-6.87	NULL	102	Reference set of genes for B-cells
9	-6.73	NULL	546	GSEA C2MARTENS_TRETINOIN_RESPONSE_DN
10	-6.72	NULL	703	GSEA C2LEE_BMP2_TARGETS_DN
11	-6.6	NULL	14	BP cellular response to zinc ion
12	-6.56	NULL	575	GSEA C2CAIRO_HEPATOBLASTOMA_CLASSES_UP
13	-6.24	NULL	190	HM HALLMARK_MYC_TARGETS_V1
14	-6.15	NULL	2704	Chromatin states Fibroblasts
15	-6.11	NULL	9	GSEA C2GUTIERREZ_WALDENSTROEMS_MACROGLOBULINEMIA_1_DN
16	-6.1	NULL	548	Chr Chr 16
17	-6.05	NULL	1052	GSEA C2DODD_NASOPHARYNGEAL_CARCINOMA_DN
18	-5.97	NULL	833	Chr Chr 19
19	-5.9	NULL	561	Colon Cancer track_CRC_TCGA_group.over_C_normal_DN
20	-5.85	NULL	128	GSEA C2GARCIA_TARGETS_OF_FL11_AND_DAX1_DN

p-values

