

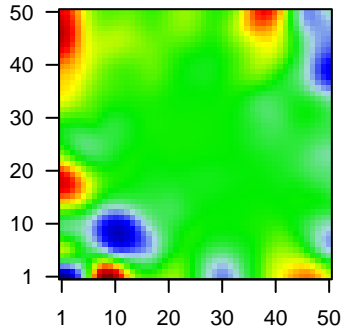
MPI-247

Global Summary

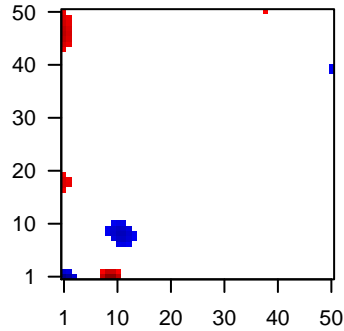
%DE = 0.05
 # genes with fdr < 0.2 = 611 (284 + / 327 -)
 # genes with fdr < 0.1 = 411 (189 + / 222 -)
 # genes with fdr < 0.05 = 303 (138 + / 165 -)
 # genes with fdr < 0.01 = 210 (100 + / 110 -)
 # genes in genesets = 13152

<FC> = 0
 <t-score> = 0.12
 <p-value> = 0.26
 <fdr> = 0.95

Portrait



Regulated Metagenes



Global Genelist

Rank	ID	log(FC)	fdr	p-value	Description
1	204580_at	-1.79	2e-16	5e-13	3 x 31 matrix metalloproteinase 12 [Source:HGNC Symbol;Acc:HGNC:11922]
2	204891_s_at	-1.71	2e-16	5e-13	49 x 39 LCK proto-oncogene, Src family tyrosine kinase [Source:HGNC Symbol;Acc:HGNC:11922]
3	205671_s_at	-1.99	2e-16	5e-13	49 x 19 major histocompatibility complex, class II, DO beta [Source:HGNC Symbol;Acc:HGNC:11922]
4	206150_at	-1.31	2e-16	5e-13	49 x 38 CD27 molecule [Source:HGNC Symbol;Acc:HGNC:11922]
5	209396_s_at	-1.52	2e-16	5e-13	3 x 1 chitinase 3 like 1 [Source:HGNC Symbol;Acc:HGNC:1932]
6	211430_s_at	-1.67	2e-16	5e-13	0 x 4 immunoglobulin heavy constant gamma 2 (G2m marker) [Source:HGNC Symbol;Acc:HGNC:1932]
7	212592_at	-2.1	2e-16	5e-13	45 x 49 joining chain of multimeric IgA and IgM [Source:HGNC Symbol;Acc:HGNC:1932]
8	212998_x_at	-0.94	2e-16	5e-13	1 x 9 major histocompatibility complex, class II, DQ beta 1 [Source:HGNC Symbol;Acc:HGNC:1932]
9	213831_at	-1.72	2e-16	5e-13	49 x 16 major histocompatibility complex, class II, DQ alpha 1 [Source:HGNC Symbol;Acc:HGNC:1932]
10	217022_s_at	-1.91	2e-16	5e-13	0 x 2 immunoglobulin heavy constant alpha 2 (A2m marker) [Source:HGNC Symbol;Acc:HGNC:1932]
11	208792_s_at	-1.21	7e-16	1e-10	0 x 3 clusterin [Source:HGNC Symbol;Acc:HGNC:2095]
12	218723_s_at	-1.21	1e-14	1e-10	45 x 49 regulator of cell cycle [Source:HGNC Symbol;Acc:HGNC:2095]
13	209480_at	-1.64	1e-14	1e-10	49 x 16 major histocompatibility complex, class II, DQ beta 1 [Source:HGNC Symbol;Acc:HGNC:2095]
14	210982_s_at	-0.74	2e-14	1e-10	2 x 10 major histocompatibility complex, class II, DR alpha [Source:HGNC Symbol;Acc:HGNC:2095]
15	215076_s_at	0.88	2e-14	3e-10	8 x 0 collagen type III alpha 1 chain [Source:HGNC Symbol;Acc:HGNC:2095]
16	202310_s_at	0.97	4e-14	3e-10	9 x 0 collagen type I alpha 1 chain [Source:HGNC Symbol;Acc:HGNC:2095]
17	217430_x_at	1.59	5e-14	4e-10	9 x 0 collagen type I alpha 1 chain [Source:HGNC Symbol;Acc:HGNC:2095]
18	201852_x_at	0.89	7e-14	8e-10	8 x 0 collagen type III alpha 1 chain [Source:HGNC Symbol;Acc:HGNC:2095]
19	219505_at	-1.17	1e-13	8e-10	9 x 9 adenosine deaminase 2 [Source:HGNC Symbol;Acc:HGNC:2095]
20	202953_at	-1.08	2e-13	8e-10	0 x 0 complement C1q B chain [Source:HGNC Symbol;Acc:HGNC:2095]

Global Geneset Analysis

Rank	GSZ	p-value	#all	Geneset
<i>Overexpressed</i>				
1	14.63	NULL	63	GSEA C2ANASTASSIOU_CANCER_MESENCHYMAL_TRANSITION_SIGNATURE
2	12.62	NULL	756	Chr Chr 11
3	11.28	NULL	319	Melanoma_Trosh_wt/wt_melanoma-cells-SpotA
4	10.7	NULL	78	Melanoma_Trosh_CAF-cell specific genes
5	10.58	NULL	244	GSEA C2KOBAYASHI_EGFR_SIGNALING_24HR_DN
6	10.24	NULL	431	GSEA C2SOBERT_OLIGODENDROCYTE_DIFFERENTIATION_UP
7	9.68	NULL	254	GSEA C2DUTERTRE_ESTRADIOL_RESPONSE_24HR_UP
8	9.67	NULL	115	Glioma_WILLSCHER_GBM_Verhaak-CL_up (C)
9	9.56	NULL	196	HM_HALLMARK_EPITHELIAL_MESENCHYMAL_TRANSITION
10	9.44	NULL	137	GSEA C2ROSTY_CERVICAL_CANCER_PROLIFERATION_CLUSTER
11	9.25	NULL	58	GSEA C2TURASHVILI_BREAST_LOBULAR_CARCINOMA_VS_DUCTAL_T
12	9.05	NULL	60	GSEA C2TURASHVILI_BREAST_LOBULAR_CARCINOMA_VS_LOBULAR
13	8.65	NULL	14	Cancer_SOTIRIOU_BREAST_CANCER_GRADE_1_VS_3_UP
14	8.48	NULL	18	GSEA C2FARMER_BREAST_CANCER_CLUSTER_5
15	8.41	NULL	174	GSEA C2GRAHAM_CML_DIVIDING_VS_NORMAL_QUIESCENT_UP
16	8.4	NULL	241	GSEA C2BASAKI_YBX1_TARGETS_UP
17	8.23	NULL	79	Melanoma_Trosh_core cycling genes in low- and high-proliferation melanoma
18	8.17	NULL	132	Colon_Cancer_Trosh_CRC-cluster-a
19	7.95	NULL	556	Chr Chr X
20	7.91	NULL	140	GSEA C2RUIZ_TNC_TARGETS_DN
<i>Underexpressed</i>				
1	-16.07	NULL	102	Reference_SOTIRIOU_B-cells
2	-15.56	NULL	17	BP_antigen processing and presentation of peptide or polysaccharide
3	-15.15	NULL	18	CC_MHC class II protein complex
4	-12.48	NULL	40	GSEA C2FARMER_BREAST_CANCER_CLUSTER_1
5	-12.16	NULL	12	MF_MHC class II receptor activity
6	-11.87	NULL	669	Chr Chr 6
7	-11.49	NULL	336	BP_immune response
8	-11.43	NULL	265	GSEA C2WALLACE_PROSTATE_CANCER_RACE_UP
9	-11.43	NULL	431	BP_immune system process
10	-11.32	NULL	589	Colon_Cancer_Trosh_TCGA-expr_kmeans_E_CIMP_H_UP_Cluster4_DN
11	-11.12	NULL	56	Pneumonia_Trosh_sep_vs_con_DN
12	-10.4	NULL	44	MF_antigen binding
13	-10.31	NULL	48	Pneumonia_Trosh_cap_fp_vs_con_DN
14	-10.08	NULL	39	BP_complement activation
15	-10.05	NULL	83	Melanoma_Trosh_melanoma_immune_high
16	-10	NULL	33	Melanoma_Trosh_T-cell specific genes-melanoma
17	-9.99	NULL	40	BP_antigen processing and presentation
18	-9.77	NULL	12	Cancer_HLA2_signature
19	-9.71	NULL	16	MF_immunoglobulin receptor binding
20	-9.62	NULL	263	Lymphoma_Trosh_CD40_6hrs_UP

p-values

