

# MPI-235

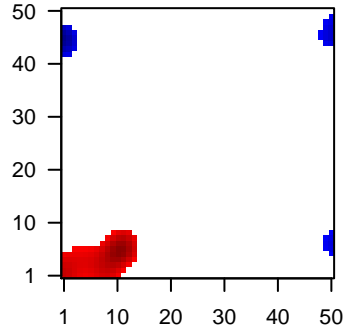
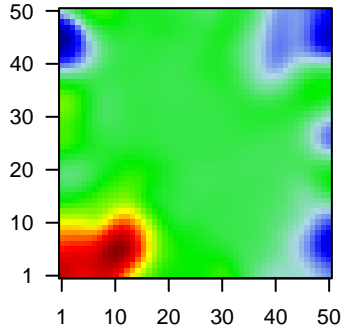
## Global Summary

%DE = 0.07  
 # genes with fdr < 0.2 = 857 ( 468 + / 389 - )  
 # genes with fdr < 0.1 = 692 ( 382 + / 310 - )  
 # genes with fdr < 0.05 = 498 ( 260 + / 238 - )  
 # genes with fdr < 0.01 = 332 ( 167 + / 165 - )  
 # genes in genesets = 13152

<FC> = 0  
 <t-score> = 0.01  
 <p-value> = 0.23  
 <fdr> = 0.93

Portrait

Regulated Metagenes



## Global Genelist

Rank	ID	log(FC)	fdr p-value	Description
1	201122_x_at	-1.35	2e-16 4e-13	49 x 43 eukaryotic translation initiation factor 5A [Source:HGNC Sym]
2	201123_s_at	-2.32	2e-16 4e-13	1 x 43 eukaryotic translation initiation factor 5A [Source:HGNC Sym]
3	202018_s_at	2.48	2e-16 4e-13	11 x 4 lactotransferrin [Source:HGNC Symbol;Acc:HGNC:6720]
4	205321_at	-1.21	2e-16 4e-13	1 x 45 eukaryotic translation initiation factor 2 subunit gamma B [So
5	207521_s_at	-1.46	2e-16 4e-13	0 x 44 ATPase sarcoplasmic/endoplasmic reticulum Ca2+ transporti
6	208791_at	1.61	2e-16 4e-13	0 x 3 clusterin [Source:HGNC Symbol;Acc:HGNC:2095]
7	208792_s_at	1.46	2e-16 4e-13	0 x 3 clusterin [Source:HGNC Symbol;Acc:HGNC:2095]
8	209754_s_at	-1.96	2e-16 4e-13	2 x 46 thymopoietin [Source:HGNC Symbol;Acc:HGNC:11875]
9	212016_s_at	-1.06	2e-16 4e-13	0 x 44 polypyrimidine tract binding protein 1 [Source:HGNC Symbol;
10	215780_s_at	-1.18	2e-16 4e-13	1 x 43 SET pseudogene 4 [Source:HGNC Symbol;Acc:HGNC:4292]
11	217370_x_at	-1.34	2e-16 4e-13	1 x 45 FUS RNA binding protein [Source:HGNC Symbol;Acc:HGNC
12	221286_s_at	-1.39	2e-16 4e-13	42 x 47 marginal zone B and B1 cell specific protein [Source:HGNC S
13	201737_s_at	-1.42	1e-15 2e-11	49 x 27 membrane associated ring-CH-type finger 6 [Source:HGNC
14	201909_at	1.29	3e-15 2e-11	43 x 49 ribosomal protein S4, Y-linked 1 [Source:HGNC Symbol;Acc:
15	201401_s_at	-1.36	4e-15 2e-11	0 x 45 G protein-coupled receptor kinase 2 [Source:HGNC Symbol;
16	208930_s_at	-1.4	5e-15 6e-11	1 x 45 interleukin enhancer binding factor 3 [Source:HGNC Symbol;
17	214055_x_at	-1.17	8e-15 9e-11	49 x 8 proline rich coiled-coil 2C [Source:HGNC Symbol;Acc:HGNC
18	204606_at	1.6	1e-14 9e-11	0 x 3 C-C motif chemokine ligand 21 [Source:HGNC Symbol;Acc:†
19	218002_s_at	1.95	2e-14 1e-09	11 x 5 C-X-C motif chemokine ligand 14 [Source:HGNC Symbol;Ac
20	208621_s_at	-1.03	1e-13 1e-09	0 x 48 ezrin [Source:HGNC Symbol;Acc:HGNC:12691]

## Global Geneset Analysis

Rank	GSZ	p-value	#all	Geneset
<i>Overexpressed</i>				
1	20.1	NULL	214	Lymphoma_TENZ_Stromal signature 1
2	19.65	NULL	429	GSEA C2SMID_BREAST_CANCER_NORMAL_LIKE_UP
3	19.54	NULL	335	GSEA C2SCHUETZ_BREAST_CANCER_DUCTAL_INVASIVE_UP
4	17.33	NULL	247	GSEA C2BOQUEST_STEM_CELL_UP
5	17.1	NULL	516	GSEA C2SMID_BREAST_CANCER_LUMINAL_B_DN
6	16.82	NULL	176	GSEA C2PICCALUGA_ANGIOIMMUNOBLASTIC_LYMPHOMA_UP
7	16.78	NULL	447	Glioma_ScoV_0.999_Sturm_E4_Mesenchymal_RTK1_PDGFR4_DN
8	16.66	NULL	589	Colon_Cancer_bctc_TCGA-expr_kmeans_E_CIMP.H_UP_Cluster4_DN
9	16.32	NULL	265	GSEA C2WALLACE_PROSTATE_CANCER_RACE_UP
10	15.03	NULL	102	Reference_B-cells
11	14.84	NULL	480	Cancer_Lembcke_Colonc Inflammation
12	14.39	NULL	331	GSEA C2LINDGREN_BLADDER_CANCER_CLUSTER_2B
13	13.76	NULL	78	Melanoma_Tirosh_CAF-cell specific genes
14	13.15	NULL	336	BP immune response
15	13.13	NULL	397	GSEA C2REN_ALVEOLAR_RHABDOMYOSARCOMA_DN
16	12.97	NULL	269	Glioma_ScoV_0.5_Sturm_C3_Mesenchymal_DN
17	12.57	NULL	1611	CC extracellular region
18	12.47	NULL	194	GSEA C2JAATINEN_HEMATOPOIETIC_STEM_CELL_DN
19	12.43	NULL	70	GSEA C2KIM_GLIS2_TARGETS_UP
20	12.35	NULL	196	HM HALLMARK_EPITHELIAL_MESENCHYMAL_TRANSITION
<i>Underexpressed</i>				
1	-14.67	NULL	5456	Chromatin_State6_Neuronal_Progenitor
2	-14.35	NULL	4261	Lymphoma_TOPP_Txn_transition
3	-13.24	NULL	1161	MF RNA binding
4	-12.39	NULL	4595	Chromatin_State6_Melanocytes
5	-11.78	NULL	4009	Chromatin_State6_ESC_Mesoderm
6	-11.75	NULL	6068	Chromatin_State6_ESC_Endoderm
7	-11.74	NULL	1174	Colon_Cancer_pointe_mucosa-position_kmeans_E_transverse_colon_UP_tran
8	-11.73	NULL	1527	GSEA C2PUJANA_BRCA1_PCC_NETWORK
9	-11.59	NULL	4579	CC nucleus
10	-11.54	NULL	2541	CC nucleoplasm
11	-11.47	NULL	2704	Chromatin_State6_Fibroblasts
12	-11.39	NULL	3803	Chromatin_State6_Fibroblasts
13	-11	NULL	575	GSEA C2CAIRO_HEPATOBLASTOMA_CLASSES_UP
14	-10.66	NULL	726	GSEA C2PUJANA_CHEK2_PCC_NETWORK
15	-10.57	NULL	5716	Chromatin_State6_peripheral_blood_4_Tx
16	-10.56	NULL	5529	Lymphoma_TOPP_Txn_elongation
17	-10.23	NULL	239	GSEA C2GINESTIER_BREAST_CANCER_ZNF217_AMPLIFIED_DN
18	-10.21	NULL	6368	Colon_Cancer_pointe_mucosa-position_kmeans_F_cecum_colon_transverse co
19	-10.11	NULL	1600	Chromatin_State6_Melanocytes
20	-10.08	NULL	6099	Chromatin_State6_Tx

