

MPI-219

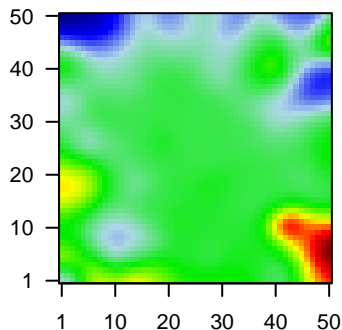
Global Summary

%DE = 0.07
 # genes with fdr < 0.2 = 697 (364 + / 333 -)
 # genes with fdr < 0.1 = 460 (248 + / 212 -)
 # genes with fdr < 0.05 = 364 (201 + / 163 -)
 # genes with fdr < 0.01 = 189 (97 + / 92 -)

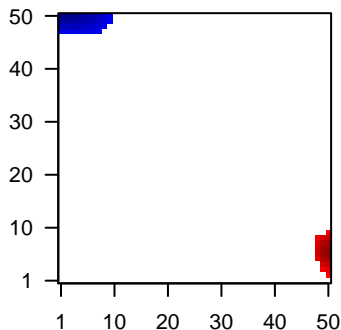
genes in genesets = 13152

<FC> = 0
 <t-score> = -0.37
 <p-value> = 0.24
 <fdr> = 0.93

Portrait



Regulated Metagenes



Global Genelist

Rank	ID	log(FC)	fdr	p-value	Description
1	39318_at	-2.13	2e-16	5e-13	46 x 49 T cell leukemia/lymphoma 1A [Source:HGNC Symbol;Acc:HGNC:10000]
2	201008_s_at	-1.98	2e-16	5e-13	0 x 49 thioredoxin interacting protein [Source:HGNC Symbol;Acc:HGNC:10000]
3	201123_s_at	-1.94	2e-16	5e-13	1 x 43 eukaryotic translation initiation factor 5A [Source:HGNC Symbol;Acc:HGNC:10000]
4	204890_s_at	-1.97	2e-16	5e-13	49 x 39 LCK proto-oncogene, Src family tyrosine kinase [Source:HGNC Symbol;Acc:HGNC:10000]
5	206398_s_at	-1.94	2e-16	5e-13	49 x 19 CD19 molecule [Source:HGNC Symbol;Acc:HGNC:1633]
6	208621_s_at	-1.73	2e-16	5e-13	0 x 48 ezrin [Source:HGNC Symbol;Acc:HGNC:12691]
7	209995_s_at	-2.84	2e-16	5e-13	46 x 49 T cell leukemia/lymphoma 1A [Source:HGNC Symbol;Acc:HGNC:10000]
8	213831_at	-1.93	2e-16	5e-13	49 x 16 major histocompatibility complex, class II, DQ alpha 1 [Source:HGNC Symbol;Acc:HGNC:10000]
9	220588_at	-2.13	2e-16	5e-13	49 x 40 breast carcinoma amplified sequence 4 [Source:HGNC Symbol;Acc:HGNC:10000]
10	205828_at	2.88	7e-16	1e-11	13 x 0 matrix metalloproteinase 3 [Source:HGNC Symbol;Acc:HGNC:10000]
11	200628_s_at	-1.56	1e-15	5e-11	0 x 0 tryptophanyl-tRNA synthetase [Source:HGNC Symbol;Acc:HGNC:10000]
12	206809_s_at	-1.54	4e-15	5e-11	41 x 46 heterogeneous nuclear ribonucleoprotein A3 [Source:HGNC Symbol;Acc:HGNC:10000]
13	203820_s_at	-1.64	6e-15	4e-10	43 x 40 insulin like growth factor 2 mRNA binding protein 3 [Source:HGNC Symbol;Acc:HGNC:10000]
14	201427_s_at	-1.4	3e-14	1e-09	47 x 37 selenoprotein P [Source:HGNC Symbol;Acc:HGNC:10751]
15	212592_at	-1.56	1e-13	1e-09	45 x 49 joining chain of multimeric IgA and IgM [Source:HGNC Symbol;Acc:HGNC:10000]
16	218559_s_at	-1.65	2e-13	2e-09	2 x 0 MAF bZIP transcription factor B [Source:HGNC Symbol;Acc:HGNC:10000]
17	205553_s_at	2.6	3e-13	2e-09	42 x 11 cysteine and glycine rich protein 3 [Source:HGNC Symbol;Acc:HGNC:10000]
18	204475_at	2.59	4e-13	5e-09	7 x 0 matrix metalloproteinase 1 [Source:HGNC Symbol;Acc:HGNC:10000]
19	204755_x_at	2.55	8e-13	5e-09	4 x 18 HLF, PAR bZIP transcription factor [Source:HGNC Symbol;Acc:HGNC:10000]
20	204218_at	-2.05	1e-12	5e-09	38 x 49 anaphase promoting complex subunit 15 [Source:HGNC Symbol;Acc:HGNC:10000]

Global Geneset Analysis

Rank	GSZ	p-value	#all	Geneset
<i>Overexpressed</i>				
1	15.29	NULL	47	GSEA C2RICKMAN_HEAD_AND_NECK_CANCER_F
2	14.18	NULL	2704	Chromatin state Fibroblasts
3	12.06	NULL	83	Reference state Muscle
4	11.68	NULL	2203	Chromatin state Colon
5	11.02	NULL	194	HM HALLMARK_MYOGENESIS
6	10.96	NULL	38	BP muscle filament sliding
7	10.58	NULL	833	Chr Chr 19
8	10.09	NULL	2507	Chromatin state Frontal_Lobe_ReprPC
9	9.97	NULL	2380	Chromatin state G1_Colon
10	9.95	NULL	3803	Chromatin state Fibroblasts
11	9.81	NULL	31	GSEA C2CHEMELLO_SOLEUS_VS_EDL_MYOFIBERS_UP
12	9.33	NULL	548	Chr Chr 16
13	9.33	NULL	27	GSEA C2REACTOME_STRIATED_MUSCLE_CONTRACTION
14	8.83	NULL	16	Reference state Hippocampus
15	8.78	NULL	49	GSEA C2EBAUER_MYOGENIC_TARGETS_OF_PAX3_FOXO1_FUSION
16	8.78	NULL	585	Chr Chr 7
17	8.78	NULL	61	GSEA C2KUNINGER_IGF1_VS_PDGF_TARGETS_UP
18	8.59	NULL	85	Lymphoma state DLBCL UP
19	8.27	NULL	3724	Chromatin state peripheral blood_12_EnhBiv
20	8.23	NULL	41	MF structural constituent of muscle
<i>Underexpressed</i>				
1	-16	NULL	5908	Lymphoma state OPP_Active_promoter
2	-13.8	NULL	5682	Lymphoma state OPP_Weak_promoter
3	-12.91	NULL	7225	Chromatin state fetal_midbrain_ReprPC
4	-12.37	NULL	5529	Lymphoma state OPP_Txn_elongation
5	-12.13	NULL	4559	Lymphoma state OPP_Weak_enhancer
6	-11.86	NULL	1338	GSEA C2DIAZ_CHRONIC_MEYLOGENOUS_LEUKEMIA_UP
7	-11.72	NULL	1190	GSEA C2BLALOCK_ALZHEIMERS_DISEASE_DN
8	-10.87	NULL	726	GSEA C2PUJANA_CHEK2_PCC_NETWORK
9	-10.63	NULL	282	Glioma WILLSCHER_GBM_Verhaak-PNwt & CL_up
10	-10.38	NULL	1527	GSEA C2PUJANA_BRCA1_PCC_NETWORK
11	-10.21	NULL	7751	Chromatin state killer cells peripheral blood_1_TssA
12	-10.2	NULL	4357	Lymphoma state OPP_Weak_txn
13	-10.05	NULL	417	GSEA C2SHEN_SMARCA2_TARGETS_UP
14	-9.99	NULL	673	GSEA C2SCHLOSSER_SERUM_RESPONSE_DN
15	-9.92	NULL	966	GSEA C2KINSEY_TARGETS_OF_EWSR1_FLII_FUSION_UP
16	-9.84	NULL	6244	Chromatin state Fibroblasts
17	-9.66	NULL	500	GSEA C2ONKEN_UVEAL_MELANOMA_DN
18	-9.54	NULL	7420	Chromatin state peripheral blood_1_TssA
19	-9.31	NULL	1354	Colon Cancer state mucosa-position_kmeans_N_cecum colon_ascending o
20	-8.97	NULL	6099	Chromatin state Tx

p-values

