

MPI-213

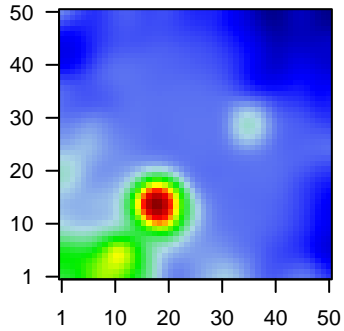
Global Summary

%DE = 0.08
 # genes with fdr < 0.2 = 1083 (790 + / 293 -)
 # genes with fdr < 0.1 = 750 (577 + / 173 -)
 # genes with fdr < 0.05 = 656 (517 + / 139 -)
 # genes with fdr < 0.01 = 502 (409 + / 93 -)

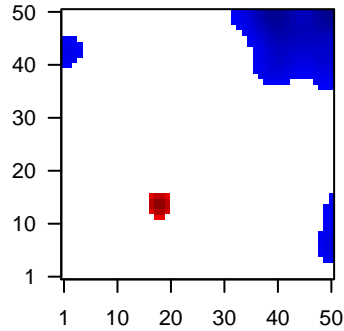
 # genes in genesets = 13152

<FC> = 0
 <t-score> = -0.25
 <p-value> = 0.19
 <fdr> = 0.92

Portrait



Regulated Metagenes



Global Genelist

Rank	ID	log(FC)	fdr	p-value	Description
1	201596_x_at	2.44	2e-16	1e-13	18 x 13 keratin 18 [Source:HGNC Symbol;Acc:HGNC:6430]
2	201839_s_at	2.49	2e-16	1e-13	1 x 19 epithelial cell adhesion molecule [Source:HGNC Symbol;Acc:HGNC:11855]
3	201884_at	2.79	2e-16	1e-13	19 x 13 carcinoembryonic antigen related cell adhesion molecule 5 [Source:HGNC Symbol;Acc:HGNC:11855]
4	202489_s_at	2.59	2e-16	1e-13	20 x 12 FXFD domain containing ion transport regulator 3 [Source:HGNC Symbol;Acc:HGNC:11855]
5	203240_at	2.57	2e-16	1e-13	18 x 13 Fc fragment of IgG binding protein [Source:HGNC Symbol;Acc:HGNC:11855]
6	203824_at	3.13	2e-16	1e-13	17 x 14 tetraspanin 8 [Source:HGNC Symbol;Acc:HGNC:11855]
7	204272_at	2.94	2e-16	1e-13	17 x 14 galectin 4 [Source:HGNC Symbol;Acc:HGNC:6565]
8	204607_at	2.57	2e-16	1e-13	34 x 28 3-hydroxy-3-methylglutaryl-CoA synthase 2 [Source:HGNC Symbol;Acc:HGNC:11855]
9	204623_at	2.56	2e-16	1e-13	17 x 14 trefol factor 3 [Source:HGNC Symbol;Acc:HGNC:11757]
10	204961_s_at	-1.75	2e-16	1e-13	49 x 39 neutrophil cytosolic factor 1 [Source:HGNC Symbol;Acc:HGNC:11855]
11	205484_at	-1.61	2e-16	1e-13	43 x 44 signaling threshold regulating transmembrane adaptor 1 [Source:HGNC Symbol;Acc:HGNC:11855]
12	205892_s_at	3.18	2e-16	1e-13	34 x 28 fatty acid binding protein 1 [Source:HGNC Symbol;Acc:HGNC:11855]
13	206143_at	2.89	2e-16	1e-13	17 x 14 solute carrier family 26 member 3 [Source:HGNC Symbol;Acc:HGNC:11855]
14	206198_s_at	2.82	2e-16	1e-13	17 x 14 carcinoembryonic antigen related cell adhesion molecule 7 [Source:HGNC Symbol;Acc:HGNC:11855]
15	206199_at	2.96	2e-16	1e-13	17 x 14 carcinoembryonic antigen related cell adhesion molecule 7 [Source:HGNC Symbol;Acc:HGNC:11855]
16	206262_at	2.91	2e-16	1e-13	17 x 14 alcohol dehydrogenase 1C (class I), gamma polypeptide [Source:HGNC Symbol;Acc:HGNC:11855]
17	206664_at	2.57	2e-16	1e-13	17 x 14 sucrase-isomaltase [Source:HGNC Symbol;Acc:HGNC:1085]
18	207214_at	2.47	2e-16	1e-13	17 x 14 serine peptidase inhibitor, Kazal type 4 [Source:HGNC Symbol;Acc:HGNC:11855]
19	207814_at	2.4	2e-16	1e-13	17 x 14 defensin alpha 6 [Source:HGNC Symbol;Acc:HGNC:2765]
20	209173_at	2.66	2e-16	1e-13	17 x 13 anterior gradient 2, protein disulphide isomerase family memt [Source:HGNC Symbol;Acc:HGNC:11855]

Global Geneset Analysis

Rank	GSZ	p-value	#all	Geneset
<i>Overexpressed</i>				
1	27.28	NULL	883	Colon Cancer Pointe_mucosa-position_kmeans_L_transverse colon_cecum
2	25.17	NULL	82	Colon Cancer Track_CRC_TCGA_group.over_A_normal_UP
3	22.66	NULL	397	Colon Cancer Track_CRC_TCGA_corr_C_normal_UP
4	19.49	NULL	3001	Chromatin states killer cells peripheral blood_14_ReprPCWk
5	19.28	NULL	3168	Lymphoid tissue OPP_Repressed
6	18.7	NULL	178	GSEA C2MUC_CELL_MIGRATION
7	18.54	NULL	3089	Chromatin states T regulatory cells peripheral blood_14_ReprPCWk
8	18.38	NULL	453	GSEA C2ONDER_CDH1_TARGETS_2_DN
9	18.06	NULL	214	Lymphoid tissue ENZ_Stromal signature 1
10	17.96	NULL	2984	Chromatin states killer cells peripheral blood_14_ReprPCWk
11	17.91	NULL	3918	Chromatin states killer cells peripheral blood_14_ReprPCWk
12	17.89	NULL	3734	Chromatin states killer cells peripheral blood_13_ReprPC
13	17.69	NULL	2765	Chromatin states T regulatory cells peripheral blood_13_ReprPC
14	17.32	NULL	1083	Colon Cancer Pointe_mucosa-position_kmeans_J_cecum colon_ascending
15	17.17	NULL	92	Colon Cancer TCGA-CRC-cluster-h
16	17.05	NULL	2405	Chromatin states killer cells peripheral blood_13_ReprPC
17	17.04	NULL	2515	Chromatin states killer cells peripheral blood_13_ReprPC
18	17.02	NULL	2535	Chromatin states naive cells peripheral blood_14_ReprPCWk
19	16.93	NULL	452	Colon Cancer Track_CRC-expr_kmeans_L_CIMP.H_UP_Cluster4_DN
20	16.92	NULL	2700	Chromatin states naive cells peripheral blood_14_ReprPCWk
<i>Underexpressed</i>				
1	-21.32	NULL	7957	Chromatin states killer cells peripheral blood_2_TssAFInk
2	-20.62	NULL	7833	Chromatin states killer cells peripheral blood_1_TssA
3	-20.42	NULL	7420	Chromatin states killer cells peripheral blood_1_TssA
4	-19.96	NULL	7930	Chromatin states T regulatory cells peripheral blood_1_TssA
5	-19.73	NULL	1527	GSEA C2PUJANA_BRCA1_PCC_NETWORK
6	-19.49	NULL	8406	Chromatin states killer cells peripheral blood_2_TssAFInk
7	-19.19	NULL	8245	Chromatin states T regulatory cells peripheral blood_2_TssAFInk
8	-17.96	NULL	7635	Chromatin states eosinophils peripheral blood_1_TssA
9	-17.88	NULL	8200	Chromatin states eosinophils peripheral blood_2_TssAFInk
10	-17.87	NULL	4261	Lymphoid tissue OPP_Txn_transition
11	-17.83	NULL	7751	Chromatin states killer cells peripheral blood_1_TssA
12	-17.78	NULL	8068	Chromatin states killer cells peripheral blood_1_TssA
13	-17.76	NULL	8431	Chromatin states naive cells peripheral blood_2_TssAFInk
14	-17.65	NULL	8322	Chromatin states naive cells peripheral blood_1_TssA
15	-17.53	NULL	8370	Chromatin states killer cells peripheral blood_2_TssAFInk
16	-17.53	NULL	5529	Lymphoid tissue OPP_Txn_elongation
17	-16.93	NULL	8816	Chromatin states killer cells peripheral blood_2_TssAFInk
18	-16.89	NULL	5716	Chromatin states killer cells peripheral blood_4_Tx
19	-16.04	NULL	726	GSEA C2PUJANA_CHEK2_PCC_NETWORK
20	-15.65	NULL	5527	Chromatin states T regulatory cells peripheral blood_4_Tx

p-values

