

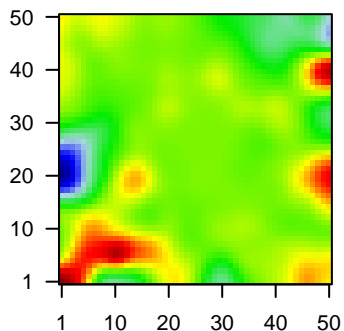
MPI-209

Global Summary

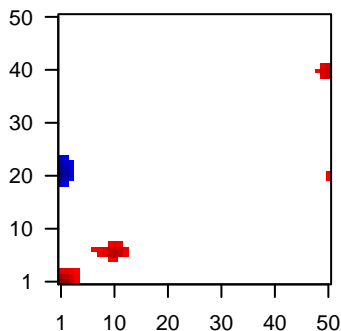
%DE = 0.05
 # genes with fdr < 0.2 = 748 (403 + / 345 -)
 # genes with fdr < 0.1 = 499 (283 + / 216 -)
 # genes with fdr < 0.05 = 412 (247 + / 165 -)
 # genes with fdr < 0.01 = 296 (184 + / 112 -)
 # genes in genesets = 13152

<FC> = 0
 <t-score> = 0.09
 <p-value> = 0.24
 <fdr> = 0.95

Portrait



Regulated Metagenes



Global Genelist

Rank	ID	log(FC)	fdr	p-value	Description
1	44790_s_at	-1.63	2e-16	2e-13	42 x 49 RUN and cysteine rich domain containing beclin 1 interacting
2	201122_x_at	-1.43	2e-16	2e-13	49 x 43 eukaryotic translation initiation factor 5A [Source:HGNC Syml
3	201123_s_at	-1.83	2e-16	2e-13	1 x 43 eukaryotic translation initiation factor 5A [Source:HGNC Syml
4	201810_s_at	-1.48	2e-16	2e-13	0 x 20 SH3 domain binding protein 5 [Source:HGNC Symbol;Acc:HC
5	201909_at	1.35	2e-16	2e-13	43 x 49 ribosomal protein S4, Y-linked 1 [Source:HGNC Symbol;Acc:
6	203413_at	2.12	2e-16	2e-13	13 x 8 neural EGFL like 2 [Source:HGNC Symbol;Acc:HGNC:7751]
7	204285_s_at	-1.52	2e-16	2e-13	3 x 24 phorbol-12-myristate-13-acetate-induced protein 1 [Source
8	204286_s_at	-1.72	2e-16	2e-13	3 x 24 phorbol-12-myristate-13-acetate-induced protein 1 [Source
9	205445_at	2.35	2e-16	2e-13	14 x 21 prolactin [Source:HGNC Symbol;Acc:HGNC:9445]
10	206045_s_at	2.15	2e-16	2e-13	42 x 16 nucleolar protein 4 [Source:HGNC Symbol;Acc:HGNC:7870]
11	206163_at	2.29	2e-16	2e-13	28 x 37 mab-21 like 1 [Source:HGNC Symbol;Acc:HGNC:6757]
12	206412_at	2.4	2e-16	2e-13	14 x 20 FER tyrosine kinase [Source:HGNC Symbol;Acc:HGNC:3655]
13	209193_at	-1.25	2e-16	2e-13	0 x 20 Pim-1 proto-oncogene, serine/threonine kinase [Source:HG
14	210448_s_at	-1.05	2e-16	2e-13	0 x 18 purinergic receptor P2X 5 [Source:HGNC Symbol;Acc:HGNC
15	211430_s_at	1	2e-16	2e-13	0 x 4 immunoglobulin heavy constant gamma 2 (G2m marker) [Sou
16	212827_at	-1.27	2e-16	2e-13	41 x 44 immunoglobulin heavy constant mu [Source:HGNC Symbol;A
17	212843_at	2.28	2e-16	2e-13	13 x 28 neural cell adhesion molecule 1 [Source:HGNC Symbol;Acc:t
18	217022_s_at	1.36	2e-16	2e-13	0 x 2 immunoglobulin heavy constant alpha 2 (A2m marker) [Sourc
19	218236_s_at	-1.24	2e-16	2e-13	8 x 20 protein kinase D3 [Source:HGNC Symbol;Acc:HGNC:9408]
20	219471_at	-1.92	2e-16	2e-13	42 x 49 RUN and cysteine rich domain containing beclin 1 interacting

Global Geneset Analysis

Rank	GSZ	p-value	#all	Geneset
<i>Overexpressed</i>				
1	12.57	NULL	39	BP complement activation
2	10.96	NULL	52	BP complement activation, classical pathway
3	10.65	NULL	44	MF antigen binding
4	10.37	NULL	53	BP regulation of complement activation
5	9.19	NULL	32	Reference GSEA C2L2L1_Plasma Cells
6	9.14	NULL	102	Reference GSEA C2L2L1_B-cells
7	8.82	NULL	76	BP Fc-gamma receptor signaling pathway involved in phagocytosis
8	8.13	NULL	11	CC immunoglobulin complex, circulating
9	7.65	NULL	9	GSEA C2L2L1_GENDER_EFFECT_UP
10	7.04	NULL	1736	Chromatin GSEA C2L2L1_cells_peripheral_blood_9_Het
11	7.02	NULL	161	BP adaptive immune response
12	6.97	NULL	195	GSEA C2L2L1_HOLLMANN_APOPTOSIS_VIA_CD40_UP
13	6.91	NULL	116	CC blood microparticle
14	6.85	NULL	2993	Chromatin GSEA C2L2L1_monocytes_peripheral_blood_9_Het
15	6.81	NULL	97	Lymphoma GSEA C2L2L1_BOSLOWSKI_red_total
16	6.79	NULL	767	Chromatin GSEA C2L2L1_fetal_midbrain_Enh
17	6.75	NULL	83	Melanoma GSEA C2L2L1_melanoma_immune_high
18	6.68	NULL	1353	Chromatin GSEA C2L2L1_naive_cells_peripheral_blood_9_Het
19	6.66	NULL	319	Chromatin GSEA C2L2L1_Colon
20	6.6	NULL	1693	Chromatin GSEA C2L2L1_cells_peripheral_blood_9_Het
<i>Underexpressed</i>				
1	-11.48	NULL	18	Lymphoma GSEA C2L2L1_WRIGHT_ABC_UP
2	-10.54	NULL	10	Lymphoma GSEA C2L2L1_LeABC_UP
3	-10.3	NULL	85	Lymphoma GSEA C2L2L1_Leukemia_BCL2_DN_BCL6_UP
4	-7.69	NULL	10	Lymphoma GSEA C2L2L1_Leukemia_ASCQUE_ABC_UP
5	-7.45	NULL	4	Lymphoma GSEA C2L2L1_WRIGHT_custom_ABC-DLBCL_UP
6	-5.37	NULL	32	GSEA C2L2L1_KEGG_INTESTINAL_IMMUNE_NETWORK_FOR_IGA_PRODUCT
7	-5.36	NULL	18	CC MHC class II protein complex
8	-5.04	NULL	677	Reference GSEA C2L2L1_BIOMINFLAS_esophagus
9	-5.03	NULL	23	CC integral component of luminal side of endoplasmic reticulum mem
10	-4.93	NULL	474	Reference GSEA C2L2L1_BIOMINFLAS_vagina
11	-4.92	NULL	17	BP antigen processing and presentation of peptide or polysaccharide
12	-4.91	NULL	213	Lymphoma GSEA C2L2L1_SPANG_IL21_DN
13	-4.84	NULL	703	GSEA C2L2L1_LEE_BMP2_TARGETS_DN
14	-4.81	NULL	9146	Chromatin GSEA C2L2L1_Leukemia_Skeletal_Muscle
15	-4.72	NULL	216	GSEA C2L2L1_PASQUALUCCI_LYMPHOMA_BY_GC_STAGE_UP
16	-4.7	NULL	14	Lymphoma GSEA C2L2L1_MAMANE_AICDA_targets_recruited
17	-4.62	NULL	5620	Chromatin GSEA C2L2L1_Leukemia_Colon
18	-4.58	NULL	8430	Chromatin GSEA C2L2L1_Leukemia_Melanocytes
19	-4.56	NULL	173	Lymphoma GSEA C2L2L1_Leukemia_Light_zone_signature
20	-4.53	NULL	30	BP nucleocytoplasmic transport

p-values

