

MPI-208

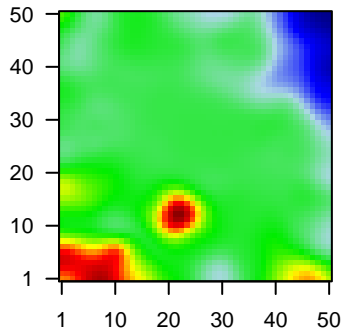
Global Summary

%DE = 0.06
 # genes with fdr < 0.2 = 644 (395 + / 249 -)
 # genes with fdr < 0.1 = 543 (348 + / 195 -)
 # genes with fdr < 0.05 = 402 (265 + / 137 -)
 # genes with fdr < 0.01 = 289 (203 + / 86 -)

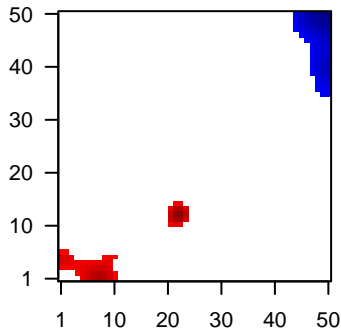
genes in genesets = 13152

<FC> = 0
 <t-score> = -0.06
 <p-value> = 0.23
 <fdr> = 0.94

Portrait



Regulated Metagenes



Global Genelist

Rank	ID	log(FC)	fdr p-value	Description Metagene
1	203509_at	-1.21	2e-16 2e-13	49 x 40 sortilin related receptor 1 [Source:HGNC Symbol;Acc:HGNC:6415]
2	203608_at	-1.85	2e-16 2e-13	45 x 49 aldehyde dehydrogenase 5 family member A1 [Source:HGNC Symbol;Acc:HGNC:6416]
3	204268_at	2.55	2e-16 2e-13	22 x 12 S100 calcium binding protein A2 [Source:HGNC Symbol;Acc:HGNC:6417]
4	204490_s_at	1.2	2e-16 2e-13	0 x 4 CD44 molecule (Indian blood group) [Source:HGNC Symbol;Acc:HGNC:6418]
5	204961_s_at	-2.03	2e-16 2e-13	49 x 39 neutrophil cytosolic factor 1 [Source:HGNC Symbol;Acc:HGNC:6419]
6	205064_at	2.39	2e-16 2e-13	22 x 12 small proline rich protein 1B [Source:HGNC Symbol;Acc:HGNC:6420]
7	205242_at	1.48	2e-16 2e-13	0 x 3 C-X-C motif chemokine ligand 13 [Source:HGNC Symbol;Acc:HGNC:6421]
8	207935_s_at	2.58	2e-16 2e-13	22 x 12 keratin 13 [Source:HGNC Symbol;Acc:HGNC:6415]
9	209125_at	3	2e-16 2e-13	22 x 12 keratin 6A [Source:HGNC Symbol;Acc:HGNC:6443]
10	209126_x_at	2.24	2e-16 2e-13	22 x 12 keratin 6B [Source:HGNC Symbol;Acc:HGNC:6444]
11	209351_at	2.9	2e-16 2e-13	22 x 12 keratin 14 [Source:HGNC Symbol;Acc:HGNC:6416]
12	209835_x_at	1.26	2e-16 2e-13	0 x 4 CD44 molecule (Indian blood group) [Source:HGNC Symbol;Acc:HGNC:6418]
13	209948_at	2.35	2e-16 2e-13	19 x 7 potassium calcium-activated channel subfamily M regulatory subunit 1 [Source:HGNC Symbol;Acc:HGNC:6422]
14	210916_s_at	1.46	2e-16 2e-13	0 x 4 CD44 molecule (Indian blood group) [Source:HGNC Symbol;Acc:HGNC:6418]
15	211430_s_at	1.11	2e-16 2e-13	0 x 4 immunoglobulin heavy constant gamma 2 (G2m marker) [Source:HGNC Symbol;Acc:HGNC:6423]
16	212014_x_at	1.31	2e-16 2e-13	0 x 4 CD44 molecule (Indian blood group) [Source:HGNC Symbol;Acc:HGNC:6418]
17	213680_at	2.4	2e-16 2e-13	22 x 12 keratin 6B [Source:HGNC Symbol;Acc:HGNC:6444]
18	213796_at	2.75	2e-16 2e-13	22 x 12 small proline rich protein 1A [Source:HGNC Symbol;Acc:HGNC:6424]
19	214084_x_at	-1.14	2e-16 2e-13	49 x 19 neutrophil cytosolic factor 1 [Source:HGNC Symbol;Acc:HGNC:6419]
20	214580_x_at	3	2e-16 2e-13	22 x 12 keratin 6A [Source:HGNC Symbol;Acc:HGNC:6443]

Global Geneset Analysis

Rank	GSZ	p-value	#all	Geneset
<i>Overexpressed</i>				
1	20.57	NULL	105	Reference:SPANG_BCL6-index2
2	16.72	NULL	248	GSEA C2JAEGER_METASTASIS_DN
3	15.3	NULL	453	GSEA C2XONDER_CDH1_TARGETS_2_DN
4	14.82	NULL	78	BP cornification
5	14.66	NULL	44	MF antigen binding
6	14.32	NULL	51	GSEA C2HUPER_BREAST_BASAL_VS_LUMINAL_UP
7	13.23	NULL	46	GSEA C2BOSCO_EPITHELIAL_DIFFERENTIATION_MODULE
8	13.21	NULL	72	BP keratinization
9	12.58	NULL	214	Lymphoma:ENZ_Stromal signature 1
10	11.87	NULL	178	GSEA C2WU_CELL_MIGRATION
11	11.73	NULL	190	HM HALLMARK_TNFA_SIGNALING_VIA_NFKB
12	11.51	NULL	374	GSEA C2CHARAFE_BREAST_CANCER_LUMINAL_VS_BASAL_DN
13	11.29	NULL	85	Lymphoma:na_DLBCL UP
14	11.12	NULL	86	GSEA C2HINATA_NFKB_TARGETS_KERATINOCYTE_UP
15	10.74	NULL	282	GSEA C2RICKMAN_TUMOR_DIFFERENTIATED_WELL_VS_POORLY_DN
16	10.57	NULL	422	GSEA C2DELYS_THYROID_CANCER_UP
17	10.53	NULL	35	CC cornified envelope
18	10.45	NULL	196	HM HALLMARK_EPITHELIAL_MESENCHYMAL_TRANSITION
19	10.43	NULL	1611	CC extracellular region
20	10.24	NULL	317	Cancer SPANG_BCL6-index2
<i>Underexpressed</i>				
1	-12.39	NULL	7957	Chromatin:naive cells peripheral blood_2_TssAFInk
2	-11.96	NULL	8406	Chromatin:naive cells peripheral blood_2_TssAFInk
3	-11.83	NULL	7930	Chromatin:naive cells peripheral blood_1_TssA
4	-11.48	NULL	7420	Chromatin:naive cells peripheral blood_1_TssA
5	-11.45	NULL	7833	Chromatin:naive cells peripheral blood_1_TssA
6	-11.35	NULL	5529	Lymphoma:OPP_Txn_elongation
7	-11.2	NULL	8245	Chromatin:naive cells peripheral blood_2_TssAFInk
8	-11.15	NULL	8068	Chromatin:naive cells peripheral blood_1_TssA
9	-11.13	NULL	7751	Chromatin:naive killer cells peripheral blood_1_TssA
10	-10.91	NULL	5716	Chromatin:naive cells peripheral blood_4_Tx
11	-10.84	NULL	8431	Chromatin:naive cells peripheral blood_2_TssAFInk
12	-10.71	NULL	8816	Chromatin:naive cells peripheral blood_2_TssAFInk
13	-10.7	NULL	8370	Chromatin:naive killer cells peripheral blood_2_TssAFInk
14	-10.63	NULL	8322	Chromatin:naive cells peripheral blood_1_TssA
15	-10.45	NULL	7078	Chromatin:naive cells peripheral blood_5_TxWk
16	-10.42	NULL	8208	Chromatin:naive cells peripheral blood_7_Enh
17	-10.37	NULL	7635	Chromatin:naive cells peripheral blood_1_TssA
18	-10.34	NULL	5753	Chromatin:naive cells peripheral blood_4_Tx
19	-10.31	NULL	6839	Chromatin:naive cells peripheral blood_5_TxWk
20	-10.17	NULL	5601	Chromatin:naive cells peripheral blood_4_Tx

p-values

