

MPI-205

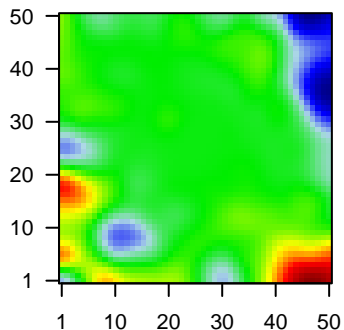
Global Summary

%DE = 0.05
 # genes with fdr < 0.2 = 510 (159 + / 351 -)
 # genes with fdr < 0.1 = 337 (100 + / 237 -)
 # genes with fdr < 0.05 = 305 (92 + / 213 -)
 # genes with fdr < 0.01 = 188 (52 + / 136 -)

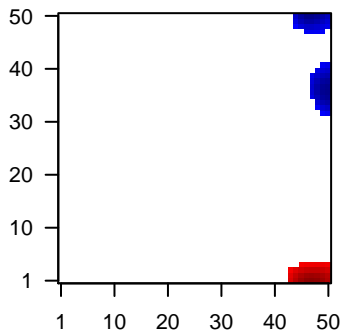
 # genes in genesets = 13152

<FC> = 0
 <t-score> = -0.04
 <p-value> = 0.27
 <fdr> = 0.95

Portrait



Regulated Metagenes



Global Genelist

Rank	ID	log(FC)	fdr	p-value	Description
1	202953_at	-1.51	2e-16	4e-13	0 x 0 complement C1q B chain [Source:HGNC Symbol;Acc:HGNC:1703]
2	204440_at	-1.99	2e-16	4e-13	0 x 8 CD83 molecule [Source:HGNC Symbol;Acc:HGNC:1703]
3	204961_s_at	-1.69	2e-16	4e-13	49 x 39 neutrophil cytosolic factor 1 [Source:HGNC Symbol;Acc:HGNC:1703]
4	206255_at	-2.29	2e-16	4e-13	48 x 45 BLK proto-oncogene, Src family tyrosine kinase [Source:HGNC Symbol;Acc:HGNC:1703]
5	209374_s_at	-2.14	2e-16	4e-13	0 x 22 immunoglobulin heavy constant mu [Source:HGNC Symbol;Acc:HGNC:1703]
6	210279_at	-1.87	2e-16	4e-13	49 x 20 G protein-coupled receptor 18 [Source:HGNC Symbol;Acc:HGNC:1703]
7	212827_at	-1.65	2e-16	4e-13	41 x 44 immunoglobulin heavy constant mu [Source:HGNC Symbol;Acc:HGNC:1703]
8	214836_x_at	-1.38	2e-16	4e-13	0 x 3
9	221011_s_at	-1.52	2e-16	4e-13	0 x 24 limb bud and heart development [Source:HGNC Symbol;Acc:HGNC:1703]
10	221234_s_at	-2.4	2e-16	4e-13	45 x 49 BTB domain and CNC homolog 2 [Source:HGNC Symbol;Acc:HGNC:1703]
11	221651_x_at	-1.44	2e-16	4e-13	0 x 3 immunoglobulin kappa constant [Source:HGNC Symbol;Acc:HGNC:1703]
12	221671_x_at	-1.48	2e-16	4e-13	0 x 3 immunoglobulin kappa constant [Source:HGNC Symbol;Acc:HGNC:1703]
13	201746_at	-1.45	4e-15	5e-10	45 x 37 tumor protein p53 [Source:HGNC Symbol;Acc:HGNC:11998]
14	212094_at	-2.12	3e-14	2e-09	45 x 49 paternally expressed 10 [Source:HGNC Symbol;Acc:HGNC:1703]
15	208056_s_at	-1.86	2e-13	2e-09	44 x 46 CBFA2/RUNX1 translocation partner 3 [Source:HGNC Symbol;Acc:HGNC:1703]
16	214669_x_at	-1.02	2e-13	2e-09	0 x 3
17	218802_at	-1.29	3e-13	4e-09	47 x 37 mitochondrial calcium uniporter dominant negative beta subunit [Source:HGNC Symbol;Acc:HGNC:1703]
18	209682_at	-1.57	6e-13	4e-09	49 x 29 Cbl proto-oncogene B [Source:HGNC Symbol;Acc:HGNC:1703]
19	211742_s_at	-1.32	9e-13	4e-09	14 x 8 ecotropic viral integration site 2B [Source:HGNC Symbol;Acc:HGNC:1703]
20	210551_s_at	2.2	9e-13	8e-09	1 x 17 acetylserotonin O-methyltransferase [Source:HGNC Symbol;Acc:HGNC:1703]

Global Geneset Analysis

Rank	GSZ	p-value	#all	Geneset
<i>Overexpressed</i>				
1	9.5	NULL	1325	Chr Chr 1
2	7.83	NULL	756	Chr Chr 11
3	7.47	NULL	85	Lymphoma_kuma_BCL2 DN_BCL6 UP
4	7.2	NULL	176	GSEA_C2_PICCALUGA_ANGIOIMMUNOBLASTIC_LYMPHOMA_UP
5	6.31	NULL	382	Chr Chr 15
6	6.22	NULL	73	GSEA_C2_NIKOLSKY_BREAST_CANCER_16P13_AMPLICON
7	6.07	NULL	2173	Chromatin_SG13_ReprPC
8	5.96	NULL	3734	Chromatin_SG13_ReprPC
9	5.88	NULL	3150	Chromatin_SG13_ReprPC
10	5.86	NULL	12	Lymphoma_kuma_mBL DOWN
11	5.84	NULL	4	Lymphoma_kuma_mBL DOWN
12	5.81	NULL	214	Lymphoma_kuma_mBL DOWN
13	5.74	NULL	3001	Chromatin_SG13_ReprPC
14	5.65	NULL	3918	Chromatin_SG13_ReprPC
15	5.62	NULL	212	CC extracellular matrix
16	5.48	NULL	2700	Chromatin_SG13_ReprPC
17	5.39	NULL	2515	Chromatin_SG13_ReprPC
18	5.29	NULL	2704	Chromatin_SG13_ReprPC
19	5.23	NULL	317	Cancer SPANG_BCL6-index2
20	5.2	NULL	14	GSEA_C2_HUMMEL_BURKITTSS_LYMPHOMA_DN
<i>Underexpressed</i>				
1	-12.72	NULL	44	MF antigen binding
2	-11.14	NULL	32	Reference_Signature_1_1_Plasma Cells
3	-10.97	NULL	16	MF immunoglobulin receptor binding
4	-10	NULL	7751	Chromatin_SG13_ReprPC
5	-9.77	NULL	2325	Chromatin_SG13_ReprPC
6	-9.44	NULL	11	MF peptidoglycan binding
7	-9.28	NULL	3564	TF ICGC_Taf1_targets
8	-9.13	NULL	8322	Chromatin_SG13_ReprPC
9	-8.95	NULL	7420	Chromatin_SG13_ReprPC
10	-8.7	NULL	7833	Chromatin_SG13_ReprPC
11	-8.38	NULL	19	BP positive regulation of B cell activation
12	-8.35	NULL	8370	Chromatin_SG13_ReprPC
13	-8.24	NULL	310	Reference_Signature_3_4_Protein phosphatases
14	-8.22	NULL	8068	Chromatin_SG13_ReprPC
15	-8.19	NULL	263	Lymphoma_kuma_SPANG_CD40 6hrs UP
16	-8.11	NULL	39	BP B cell receptor signaling pathway
17	-8.05	NULL	3769	TF ICGC_Pmlsc71910_targets
18	-8.02	NULL	4212	TF ICGC_Pol2_targets
19	-7.97	NULL	7930	Chromatin_SG13_ReprPC
20	-7.89	NULL	7635	Chromatin_SG13_ReprPC

p-values

