

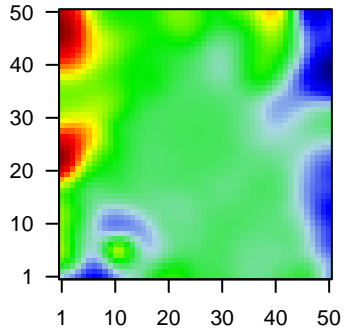
MPI-192

Global Summary

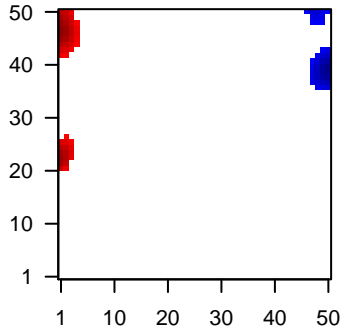
%DE = 0.07
 # genes with fdr < 0.2 = 815 (445 + / 370 -)
 # genes with fdr < 0.1 = 605 (337 + / 268 -)
 # genes with fdr < 0.05 = 420 (246 + / 174 -)
 # genes with fdr < 0.01 = 236 (140 + / 96 -)
 # genes in genesets = 13152

<FC> = 0
 <t-score> = 0.08
 <p-value> = 0.23
 <fdr> = 0.93

Portrait



Regulated Metagenes



Global Genelist

Rank	ID	log(FC)	fdr	p-value	Description
1	39318_at	-1.71	2e-16	2e-13	46 x 49 T cell leukemia/lymphoma 1A [Source:HGNC Symbol;Acc:HGNC:10000]
2	203795_s_at	-1.7	2e-16	2e-13	42 x 49 BCL tumor suppressor 7A [Source:HGNC Symbol;Acc:HGNC:10000]
3	203974_at	-1.64	2e-16	2e-13	1 x 33 pseudouridine 5'-phosphatase [Source:HGNC Symbol;Acc:HGNC:10000]
4	205363_at	1.9	2e-16	2e-13	41 x 15 gamma-butyrobetaine hydroxylase 1 [Source:HGNC Symbol;Acc:HGNC:10000]
5	206398_s_at	-1.45	2e-16	2e-13	49 x 19 CD19 molecule [Source:HGNC Symbol;Acc:HGNC:1633]
6	206691_s_at	2.03	2e-16	2e-13	6 x 27 protein disulfide isomerase family A member 2 [Source:HGNC Symbol;Acc:HGNC:10000]
7	209995_s_at	-1.84	2e-16	2e-13	46 x 49 T cell leukemia/lymphoma 1A [Source:HGNC Symbol;Acc:HGNC:10000]
8	210258_at	-2.24	2e-16	2e-13	49 x 40 regulator of G protein signaling 13 [Source:HGNC Symbol;Acc:HGNC:10000]
9	211430_s_at	0.87	2e-16	2e-13	0 x 4 immunoglobulin heavy constant gamma 2 (G2m marker) [Source:HGNC Symbol;Acc:HGNC:10000]
10	211641_x_at	2.31	2e-16	2e-13	10 x 5
11	211656_x_at	-1.19	2e-16	2e-13	2 x 9 major histocompatibility complex, class II, DQ beta 1 [Source:HGNC Symbol;Acc:HGNC:10000]
12	215176_x_at	2.02	2e-16	2e-13	10 x 5 immunoglobulin kappa variable 1-39 (gene/pseudogene) [Source:HGNC Symbol;Acc:HGNC:10000]
13	216207_x_at	1.83	2e-16	2e-13	10 x 5 immunoglobulin kappa variable 1-13 (gene/pseudogene) [Source:HGNC Symbol;Acc:HGNC:10000]
14	216401_x_at	2.34	2e-16	2e-13	10 x 5 immunoglobulin kappa variable 1-37 (non-functional) [Source:HGNC Symbol;Acc:HGNC:10000]
15	216576_x_at	2.19	2e-16	2e-13	10 x 5
16	216829_at	1.93	2e-16	2e-13	19 x 9
17	219360_s_at	2.09	2e-16	2e-13	0 x 20 transient receptor potential cation channel subfamily M member 1 [Source:HGNC Symbol;Acc:HGNC:10000]
18	221651_x_at	1.07	2e-16	2e-13	0 x 3 immunoglobulin kappa constant [Source:HGNC Symbol;Acc:HGNC:10000]
19	221671_x_at	1	2e-16	2e-13	0 x 3 immunoglobulin kappa constant [Source:HGNC Symbol;Acc:HGNC:10000]
20	214669_x_at	0.85	4e-16	5e-12	0 x 3

Global Geneset Analysis

Rank	GSZ	p-value	#all	Geneset
<i>Overexpressed</i>				
1	13.04	NULL	32	Reference signature_1_1_Plasma Cells
2	11.94	NULL	44	MF antigen binding
3	10.09	NULL	52	BP complement activation, classical pathway
4	8.59	NULL	7833	Chromatin state: peripheral blood_1_TssA
5	8.36	NULL	8406	Chromatin state: peripheral blood_2_TssAFlnk
6	8.34	NULL	7930	Chromatin state: regulatory cells peripheral blood_1_TssA
7	8.22	NULL	8068	Chromatin state: regulatory cells peripheral blood_1_TssA
8	8.16	NULL	689	Chr Chr 3
9	8.07	NULL	16	MF immunoglobulin receptor binding
10	7.94	NULL	4208	Chromatin state: peripheral blood_6_EnhG
11	7.78	NULL	8322	Chromatin state: naive cells peripheral blood_1_TssA
12	7.72	NULL	7957	Chromatin state: peripheral blood_2_TssAFlnk
13	7.64	NULL	8245	Chromatin state: regulatory cells peripheral blood_2_TssAFlnk
14	7.58	NULL	8370	Chromatin state: killer cells peripheral blood_2_TssAFlnk
15	7.51	NULL	39	BP complement activation
16	7.5	NULL	7420	Chromatin state: peripheral blood_1_TssA
17	7.44	NULL	2704	Chromatin state: Fibroblasts
18	7.36	NULL	7635	Chromatin state: macrocytes peripheral blood_1_TssA
19	7.34	NULL	8816	Chromatin state: regulatory cells peripheral blood_2_TssAFlnk
20	7.33	NULL	254	GSEA C2DUTERTRE ESTRADIOL_RESPONSE_24HR_UP
<i>Underexpressed</i>				
1	-8.5	NULL	480	Chr Chr 4
2	-6.99	NULL	335	GSEA C2SCHUETZ_BREAST_CANCER_DUCTAL_INVASIVE_UP
3	-6.83	NULL	6	Lymphoma: GCB UP
4	-6.62	NULL	3168	Lymphoma: OPP_Repressed
5	-6.62	NULL	9	Lymphoma: AVE_BL UP
6	-6.5	NULL	4	Immunoglobulin: CRC_MHC_class_II
7	-6.44	NULL	354	GSEA C2FULCHER_INFLAMMATORY_RESPONSE_LLECTIN_VS_LPS_DN
8	-6.29	NULL	3918	Chromatin state: peripheral blood_14_ReprPCWk
9	-6.13	NULL	2134	Chromatin state: regulatory cells peripheral blood_12_EnhBiv
10	-6.13	NULL	3734	Chromatin state: peripheral blood_13_ReprPC
11	-6.1	NULL	42	GSEA C2HUMMEL_BURKITTIS_LYMPHOMA_UP
12	-5.96	NULL	4	Lymphoma: RIGHT_custom GCB-DLBCL UP
13	-5.8	NULL	2405	Chromatin state: peripheral blood_13_ReprPC
14	-5.76	NULL	73	GSEA C2HECKER_IFNB1_TARGETS
15	-5.76	NULL	96	Lymphoma: SPANG_LPS 6hrs UP
16	-5.56	NULL	22	GSEA C2ONO_AML1_TARGETS_UP
17	-5.46	NULL	2984	Chromatin state: killer cells peripheral blood_14_ReprPCWk
18	-5.45	NULL	17	Lymphoma: leukemia_BCL2 UP_BCL6 DN
19	-5.43	NULL	17	BP antigen processing and presentation of peptide or polysaccharide antigen fragments
20	-5.42	NULL	8	Lymphoma: MASCQUE_GCB UP

p-values

