

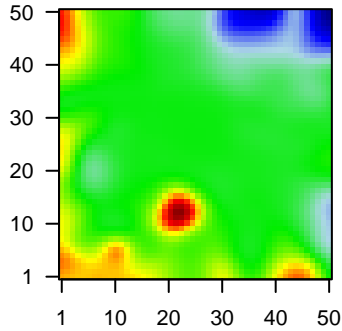
# MPI-190

## Global Summary

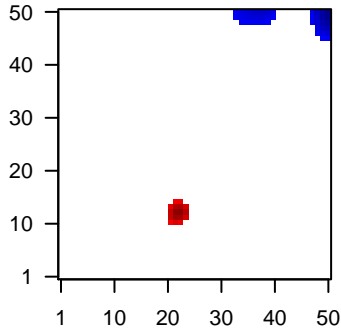
%DE = 0.06  
 # genes with  $fdr < 0.2$  = 532 ( 315 + / 217 -)  
 # genes with  $fdr < 0.1$  = 411 ( 256 + / 155 -)  
 # genes with  $fdr < 0.05$  = 324 ( 217 + / 107 -)  
 # genes with  $fdr < 0.01$  = 226 ( 164 + / 62 -)  
  
 # genes in genesets = 13152

<FC> = 0  
 <t-score> = 0.05  
 <p-value> = 0.25  
 <fdr> = 0.94

Portrait



Regulated Metagenes



## Global Genelist

Rank	ID	log(FC)	fdr	Description
		p-value		Metagene
1	201525_at	2.5	2e-16	3e-13 29 x 0 apolipoprotein D [Source:HGNC Symbol;Acc:HGNC:612]
2	204268_at	2.49	2e-16	3e-13 22 x 12 S100 calcium binding protein A2 [Source:HGNC Symbol;Acc:HGNC:229]
3	205064_at	2.41	2e-16	3e-13 22 x 12 small proline rich protein 1B [Source:HGNC Symbol;Acc:HGNC:6415]
4	205624_at	2.13	2e-16	3e-13 19 x 10 carboxypeptidase A3 [Source:HGNC Symbol;Acc:HGNC:229]
5	205828_at	2.33	2e-16	3e-13 13 x 0 matrix metalloproteinase 3 [Source:HGNC Symbol;Acc:HGNC:6415]
6	207935_s_at	2.82	2e-16	3e-13 22 x 12 keratin 13 [Source:HGNC Symbol;Acc:HGNC:6415]
7	209125_at	2.95	2e-16	3e-13 22 x 12 keratin 6A [Source:HGNC Symbol;Acc:HGNC:6443]
8	209126_x_at	2.23	2e-16	3e-13 22 x 12 keratin 6B [Source:HGNC Symbol;Acc:HGNC:6444]
9	209351_at	2.84	2e-16	3e-13 22 x 12 keratin 14 [Source:HGNC Symbol;Acc:HGNC:6416]
10	213240_s_at	2.62	2e-16	3e-13 22 x 12 keratin 4 [Source:HGNC Symbol;Acc:HGNC:6441]
11	213680_at	2.36	2e-16	3e-13 22 x 12 keratin 6B [Source:HGNC Symbol;Acc:HGNC:6444]
12	213796_at	2.77	2e-16	3e-13 22 x 12 small proline rich protein 1A [Source:HGNC Symbol;Acc:HGNC:6415]
13	213831_at	-1.57	2e-16	3e-13 49 x 16 major histocompatibility complex, class II, DQ alpha 1 [Source:HGNC Symbol;Acc:HGNC:6443]
14	214580_x_at	2.94	2e-16	3e-13 22 x 12 keratin 6A [Source:HGNC Symbol;Acc:HGNC:6443]
15	215101_s_at	2.11	2e-16	3e-13 14 x 0 C-X-C motif chemokine ligand 5 [Source:HGNC Symbol;Acc:HGNC:6443]
16	215176_x_at	2.05	2e-16	3e-13 10 x 5 immunoglobulin kappa variable 1-39 (gene/pseudogene) [Source:HGNC Symbol;Acc:HGNC:6443]
17	218990_s_at	2.23	2e-16	3e-13 22 x 12 small proline rich protein 3 [Source:HGNC Symbol;Acc:HGNC:6415]
18	216491_x_at	2.01	4e-16	5e-12 10 x 5 immunoglobulin heavy variable 4-61 [Source:HGNC Symbol;Acc:HGNC:6443]
19	203290_at	1.83	7e-16	7e-12 7 x 0 major histocompatibility complex, class II, DQ alpha 2 [Source:HGNC Symbol;Acc:HGNC:6443]
20	201820_at	2.07	1e-15	7e-12 22 x 12 keratin 5 [Source:HGNC Symbol;Acc:HGNC:6442]

## Global Geneset Analysis

Rank	GSZ	p-value	#all	Geneset
<i>Overexpressed</i>				
1	22.67	NULL	105	Reference:GSEA:GSE10000
2	17.32	NULL	248	GSEA C2:JAEGER_METASTASIS_DN
3	16.7	NULL	480	Cancer:GSEA:GSE10000
4	16.01	NULL	78	BP:GSEA:GSE10000
5	15.64	NULL	453	GSEA C2:ZONDER_CDH1_TARGETS_2_DN
6	15.26	NULL	51	GSEA C2:HUPER_BREAST_BASAL_VS_LUMINAL_UP
7	14.76	NULL	223	GSEA C2:MCLACHLAN_DENTAL_CARIES_UP
8	14.6	NULL	46	GSEA C2:BOSCO_EPITHELIAL_DIFFERENTIATION_MODULE
9	14.37	NULL	72	BP:GSEA:GSE10000
10	13.97	NULL	219	GSEA C2:MCLACHLAN_DENTAL_CARIES_DN
11	13.26	NULL	516	GSEA C2:SMID_BREAST_CANCER_LUMINAL_B_DN
12	13.25	NULL	336	BP:GSEA:GSE10000
13	12.34	NULL	47	GSEA C2:ROMER_TUMORIGENESIS_DN
14	12.27	NULL	52	BP:GSEA:GSE10000
15	12.23	NULL	44	MF:GSEA:GSE10000
16	11.86	NULL	1611	CC:GSEA:GSE10000
17	11.77	NULL	28	BP:GSEA:GSE10000
18	11.57	NULL	57	GSEA C2:ZONDER_CDH1_TARGETS_3_DN
19	11.52	NULL	589	Colon:GSEA:GSE10000
20	11.42	NULL	35	CC:GSEA:GSE10000
<i>Underexpressed</i>				
1	-16.46	NULL	7225	Chromatin:GSEA:GSE10000
2	-15.2	NULL	319	Melanoma:GSEA:GSE10000
3	-13.96	NULL	9160	Chromatin:GSEA:GSE10000
4	-13.56	NULL	8641	Chromatin:GSEA:GSE10000
5	-13.48	NULL	8275	Chromatin:GSEA:GSE10000
6	-13.38	NULL	6997	Chromatin:GSEA:GSE10000
7	-13.1	NULL	8766	Chromatin:GSEA:GSE10000
8	-12.93	NULL	8068	Chromatin:GSEA:GSE10000
9	-12.78	NULL	7957	Chromatin:GSEA:GSE10000
10	-12.75	NULL	9576	Chromatin:GSEA:GSE10000
11	-12.59	NULL	8322	Chromatin:GSEA:GSE10000
12	-12.57	NULL	9179	Chromatin:GSEA:GSE10000
13	-12.54	NULL	7930	Chromatin:GSEA:GSE10000
14	-12.48	NULL	8918	Chromatin:GSEA:GSE10000
15	-12.37	NULL	7833	Chromatin:GSEA:GSE10000
16	-12.3	NULL	137	GSEA C2:ROSTY_CERVICAL_CANCER_PROLIFERATION_CLUSTER
17	-12.18	NULL	431	GSEA C2:GOBERT_OLIGODENDROCYTE_DIFFERENTIATION_UP
18	-12.11	NULL	8370	Chromatin:GSEA:GSE10000
19	-12.1	NULL	8406	Chromatin:GSEA:GSE10000
20	-12.09	NULL	8245	Chromatin:GSEA:GSE10000

p-values

