

MPI-186

Global Summary

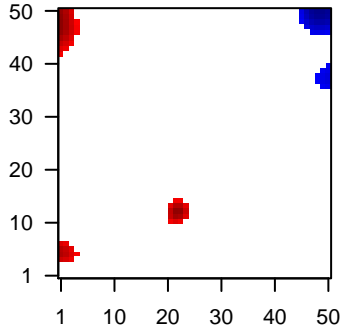
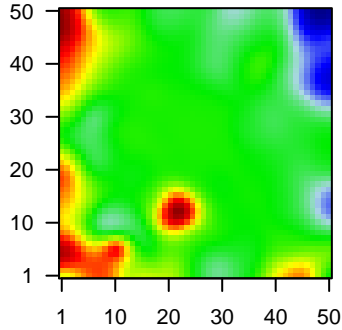
%DE = 0.04
 # genes with fdr < 0.2 = 498 (307 + / 191 -)
 # genes with fdr < 0.1 = 335 (223 + / 112 -)
 # genes with fdr < 0.05 = 292 (198 + / 94 -)
 # genes with fdr < 0.01 = 187 (136 + / 51 -)

 # genes in genesets = 13152

<FC> = 0
 <t-score> = 0.07
 <p-value> = 0.26
 <fdr> = 0.96

Portrait

Regulated Metagenes



Global Genelist

Rank	ID	log(FC)	fdr	p-value	Description
1	202953_at	-1.28	2e-16	2e-13	0 x 0 complement C1q B chain [Source:HGNC Symbol;Acc:HGNC:202953]
2	203290_at	1.96	2e-16	2e-13	7 x 0 major histocompatibility complex, class II, DQ alpha 2 [Source:HGNC Symbol;Acc:HGNC:203290]
3	207935_s_at	2.97	2e-16	2e-13	22 x 12 keratin 13 [Source:HGNC Symbol;Acc:HGNC:6415]
4	209116_x_at	-1.42	2e-16	2e-13	6 x 29 hemoglobin subunit beta [Source:HGNC Symbol;Acc:HGNC:209116]
5	209125_at	2.68	2e-16	2e-13	22 x 12 keratin 6A [Source:HGNC Symbol;Acc:HGNC:6443]
6	209351_at	2.41	2e-16	2e-13	22 x 12 keratin 14 [Source:HGNC Symbol;Acc:HGNC:6416]
7	209458_x_at	-1.36	2e-16	2e-13	6 x 29 hemoglobin subunit alpha 2 [Source:HGNC Symbol;Acc:HGNC:209458]
8	211430_s_at	1.11	2e-16	2e-13	0 x 4 immunoglobulin heavy constant gamma 2 (G2m marker) [Source:HGNC Symbol;Acc:HGNC:211430]
9	211699_x_at	-1.48	2e-16	2e-13	6 x 29 hemoglobin subunit alpha 2 [Source:HGNC Symbol;Acc:HGNC:211699]
10	213240_s_at	2.75	2e-16	2e-13	22 x 12 keratin 4 [Source:HGNC Symbol;Acc:HGNC:6441]
11	213796_at	2.65	2e-16	2e-13	22 x 12 small proline rich protein 1A [Source:HGNC Symbol;Acc:HGNC:213796]
12	213831_at	-1.86	2e-16	2e-13	49 x 16 major histocompatibility complex, class II, DQ alpha 1 [Source:HGNC Symbol;Acc:HGNC:213831]
13	214580_x_at	2.81	2e-16	2e-13	22 x 12 keratin 6A [Source:HGNC Symbol;Acc:HGNC:6443]
14	216542_x_at	2.09	2e-16	2e-13	10 x 5 immunoglobulin heavy variable 3-20 [Source:HGNC Symbol;Acc:HGNC:216542]
15	216984_x_at	2.38	2e-16	2e-13	10 x 5
16	217022_s_at	1.6	2e-16	2e-13	0 x 2 immunoglobulin heavy constant alpha 2 (A2m marker) [Source:HGNC Symbol;Acc:HGNC:217022]
17	217232_x_at	-1.68	2e-16	2e-13	6 x 29 hemoglobin subunit beta [Source:HGNC Symbol;Acc:HGNC:217232]
18	218990_s_at	2.28	2e-16	2e-13	22 x 12 small proline rich protein 3 [Source:HGNC Symbol;Acc:HGNC:218990]
19	220635_at	2.14	2e-16	2e-13	4 x 19 psoriasis susceptibility 1 candidate 2 [Source:HGNC Symbol;Acc:HGNC:220635]
20	221651_x_at	0.84	2e-16	2e-13	0 x 3 immunoglobulin kappa constant [Source:HGNC Symbol;Acc:HGNC:221651]

Global Geneset Analysis

Rank	GSZ	p-value	#all	Geneset
<i>Overexpressed</i>				
1	20.79	NULL	105	Reference:GSEA_C2LUMINA
2	17.05	NULL	44	MF antigen binding
3	14.3	NULL	78	BP cornification
4	13.9	NULL	52	BP complement activation, classical pathway
5	13.46	NULL	72	BP keratinization
6	13	NULL	32	Reference:GSEA_C2LUMINA
7	12.97	NULL	248	GSEA_C2LUMINA_1_1_Plasma Cells
8	12.89	NULL	46	GSEA_C2BOSCO_EPITHELIAL_DIFFERENTIATION_MODULE
9	12.47	NULL	11	CC immunoglobulin complex, circulating
10	11.7	NULL	16	MF immunoglobulin receptor binding
11	11.61	NULL	51	GSEA_C2HUPER_BREAST_BASAL_VS_LUMINAL_UP
12	11.51	NULL	85	Lymphoma_DLBCL_UP
13	11.4	NULL	453	GSEA_C2ONDER_CDH1_TARGETS_2_DN
14	10.85	NULL	47	GSEA_C2CROMER_TUMORIGENESIS_DN
15	10.41	NULL	21	BP phagocytosis, recognition
16	10.1	NULL	35	CC cornified envelope
17	9.74	NULL	19	BP positive regulation of B cell activation
18	9.6	NULL	76	BP Fc-gamma receptor signaling pathway involved in phagocytosis
19	9.55	NULL	27	CC keratin filament
20	9.42	NULL	28	BP peptide cross-linking
<i>Underexpressed</i>				
1	-11.27	NULL	4559	Lymphoma_OVPP_Weak_enhancer
2	-9.09	NULL	3564	TF ICGC_Taf1_targets
3	-8.38	NULL	3778	TF ICGC_Pol24_targets
4	-8.13	NULL	4357	Lymphoma_OVPP_Weak_txn
5	-8.01	NULL	3769	TF ICGC_Pmlsc71910_targets
6	-7.95	NULL	3703	TF ICGC_Foxm1_targets
7	-7.93	NULL	689	Chr Chr 3
8	-7.91	NULL	7225	Chromatin:Ovarian_fetal_midbrain_ReprPC
9	-7.79	NULL	3804	TF ICGC_Stat5_targets
10	-7.66	NULL	4072	TF ICGC_Mta3_targets
11	-7.64	NULL	4278	TF ICGC_Yy1_targets
12	-7.45	NULL	3451	TF ICGC_Atf2_targets
13	-7.42	NULL	1044	TF ICGC_Six5_targets
14	-7.37	NULL	3796	TF ICGC_Nficsc81335_targets
15	-7.34	NULL	3420	TF ICGC_Bclaf101388_targets
16	-7.17	NULL	3630	TF ICGC_Sp1_targets
17	-7.1	NULL	4602	TF ICGC_Elf1_targets
18	-6.89	NULL	1494	TF ICGC_Cebpbsc150_targets
19	-6.88	NULL	9	Lymphoma_OVAVE_BL_UP
20	-6.69	NULL	6997	Chromatin:Ovarian_fetal_midbrain_K9K27me3

p-values

