

MPI-185

Global Summary

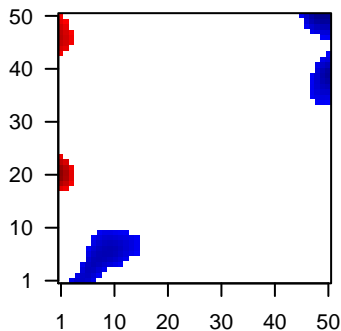
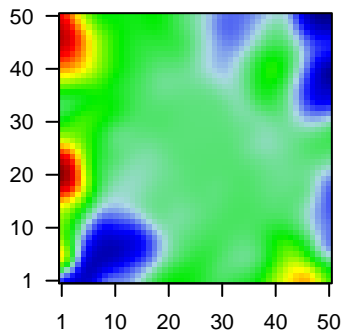
%DE = 0.05
 # genes with fdr < 0.2 = 580 (270 + / 310 -)
 # genes with fdr < 0.1 = 378 (167 + / 211 -)
 # genes with fdr < 0.05 = 311 (140 + / 171 -)
 # genes with fdr < 0.01 = 205 (89 + / 116 -)

 # genes in genesets = 13152

<FC> = 0
 <t-score> = -0.02
 <p-value> = 0.26
 <fdr> = 0.95

Portrait

Regulated Metagenes



Global Genelist

Rank	ID	log(FC)	fdr	p-value	Description
1	202003_s_at	-1.52	2e-16	4e-13	34 x 49 acetyl-CoA acyltransferase 2 [Source:HGNC Symbol;Acc:HGNC:3700]
2	203033_x_at	-1.45	2e-16	4e-13	40 x 45 fumarate hydratase [Source:HGNC Symbol;Acc:HGNC:3700]
3	204416_x_at	-1.73	2e-16	4e-13	5 x 3 apolipoprotein C1 [Source:HGNC Symbol;Acc:HGNC:607]
4	209810_at	2.59	2e-16	4e-13	0 x 22 surfactant protein B [Source:HGNC Symbol;Acc:HGNC:1080]
5	210258_at	-2.23	2e-16	4e-13	49 x 40 regulator of G protein signaling 13 [Source:HGNC Symbol;Acc:HGNC:3700]
6	211644_x_at	2.18	2e-16	4e-13	0 x 1 immunoglobulin kappa variable 3-20 [Source:HGNC Symbol;Acc:HGNC:3700]
7	212085_at	-1.37	2e-16	4e-13	39 x 34 solute carrier family 25 member 6 [Source:HGNC Symbol;Acc:HGNC:3700]
8	212826_s_at	-1.54	2e-16	4e-13	40 x 33 solute carrier family 25 member 6 [Source:HGNC Symbol;Acc:HGNC:3700]
9	213553_x_at	-1.55	2e-16	4e-13	5 x 2 apolipoprotein C1 [Source:HGNC Symbol;Acc:HGNC:607]
10	213831_at	-1.47	2e-16	4e-13	49 x 16 major histocompatibility complex, class II, DQ alpha 1 [Source:HGNC Symbol;Acc:HGNC:3700]
11	214170_x_at	-1.28	2e-16	4e-13	32 x 42 fumarate hydratase [Source:HGNC Symbol;Acc:HGNC:3700]
12	215176_x_at	-1.63	7e-16	4e-10	10 x 5 immunoglobulin kappa variable 1-39 (gene/pseudogene) [Source:HGNC Symbol;Acc:HGNC:3700]
13	214870_x_at	-1.35	2e-14	1e-09	49 x 5 nuclear pore complex-interacting protein family member A5 isoform 1 [Source:HGNC Symbol;Acc:HGNC:3700]
14	203043_at	-1.49	1e-13	1e-09	49 x 18 zinc finger BED-type containing 1 [Source:HGNC Symbol;Acc:HGNC:3700]
15	207861_at	2.1	2e-13	1e-09	0 x 20 C-C motif chemokine ligand 22 [Source:HGNC Symbol;Acc:HGNC:3700]
16	219360_s_at	2.09	2e-13	1e-09	0 x 20 transient receptor potential cation channel subfamily M member 1 [Source:HGNC Symbol;Acc:HGNC:3700]
17	203624_at	-1.37	3e-13	2e-09	43 x 9 A-kinase anchoring protein 17A [Source:HGNC Symbol;Acc:HGNC:3700]
18	203680_at	-1.81	3e-13	8e-09	45 x 49 protein kinase cAMP-dependent type II regulatory subunit beta [Source:HGNC Symbol;Acc:HGNC:3700]
19	219505_at	-1.29	7e-13	3e-08	9 x 9 adenosine deaminase 2 [Source:HGNC Symbol;Acc:HGNC:3700]
20	204753_s_at	2	2e-12	3e-08	2 x 18 HLF, PAR bZIP transcription factor [Source:HGNC Symbol;Acc:HGNC:3700]

Global Geneset Analysis

Rank	GSZ	p-value	#all	Geneset
<i>Overexpressed</i>				
1	9.15	NULL	492	Chr Chr 9
2	8.85	NULL	18	Lymphoma_T10_RIGHT_ABC UP
3	8.39	NULL	2704	Chromatin_state_10_Fibroblasts
4	8.14	NULL	90	GSEA_C2_BASSO_CD40_SIGNALING_UP
5	7.73	NULL	10	Lymphoma_T10_ASCQUE_ABC UP
6	7.7	NULL	3767	Chromatin_state_10_peripheral_blood_6_EnhG
7	7.51	NULL	4208	Chromatin_state_10_peripheral_blood_6_EnhG
8	7.38	NULL	3150	TF_ICGC_Creb1_targets
9	7.33	NULL	2899	TF_ICGC_Nfatc1_targets
10	7.32	NULL	10	Lymphoma_T10_ABC UP
11	7.29	NULL	3682	Chromatin_state_10_killer_cells_peripheral_blood_6_EnhG
12	7.12	NULL	689	Chr Chr 3
13	7.11	NULL	2380	Chromatin_state_10_51_Colon
14	7	NULL	85	Lymphoma_T10_DLBCL UP
15	6.98	NULL	4602	TF_ICGC_Elf1_targets
16	6.93	NULL	3564	TF_ICGC_Taf1_targets
17	6.92	NULL	4212	TF_ICGC_Pol2_targets
18	6.89	NULL	4278	TF_ICGC_Yy1_targets
19	6.81	NULL	14	GSEA_C2_HUMMEL_BURKITTIS_LYMPHOMA_DN
20	6.76	NULL	4131	TF_ICGC_Tcf3_targets
<i>Underexpressed</i>				
1	-9.36	NULL	386	GSEA_C2_RUTELLA_RESPONSE_TO_HGF_VS_CSF2RB_AND_IL4_UP
2	-9.15	NULL	195	GSEA_C2_HOLLMANN_APOPTOSIS_VIA_CD40_UP
3	-8.9	NULL	71	Melanoma_T10_Macrophage_specific_genes-melanoma
4	-8.16	NULL	263	Lymphoma_T10_PANG_CD40_6hrs UP
5	-8.12	NULL	78	Melanoma_T10_Macrophage_specific_genes-melanoma
6	-8.08	NULL	354	GSEA_C2_FULCHER_INFLAMMATORY_RESPONSE_LECTIN_VS_LPS_DN
7	-7.51	NULL	14	Lymphoma_T10_RIGHT_GCB UP
8	-7.32	NULL	97	Lymphoma_T10_SOLOWSKI_red total
9	-7.3	NULL	297	GSEA_C2_RUTELLA_RESPONSE_TO_CSF2RB_AND_IL4_DN
10	-7.1	NULL	8	Lymphoma_T10_ASCQUE_GCB UP
11	-6.5	NULL	4	Lymphoma_T10_RIGHT_custom_GCB-DLBCL UP
12	-6.43	NULL	192	Lymphoma_T10_tora_Dark zone signature
13	-6.34	NULL	96	Lymphoma_T10_PANG_LPS_6hrs UP
14	-6.31	NULL	265	GSEA_C2_WALLACE_PROSTATE_CANCER_RACE_UP
15	-6.31	NULL	447	Glioma_ScoV_0.999_Sturm_E4_Mesenchymal_RTK_I_PDGFR_A_DN
16	-6.31	NULL	404	GSEA_C2_RUTELLA_RESPONSE_TO_HGF_UP
17	-6.15	NULL	37	GSEA_C2_KORKOLA_SEMINOMA_UP
18	-6.09	NULL	39	GSEA_C2_ZHAN_MULTIPLE_MYELOMA_DN
19	-6.03	NULL	36	GSEA_C2_KORKOLA_EMBRYONAL_CARCINOMA_UP
20	-5.97	NULL	321	GSEA_C2_BLUM_RESPONSE_TO_SALIRASIB_DN

p-values

