

MPI-179

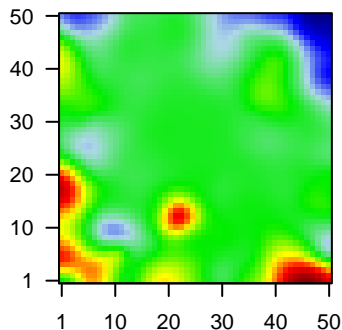
Global Summary

%DE = 0.04
 # genes with fdr < 0.2 = 441 (240 + / 201 -)
 # genes with fdr < 0.1 = 329 (184 + / 145 -)
 # genes with fdr < 0.05 = 264 (149 + / 115 -)
 # genes with fdr < 0.01 = 181 (106 + / 75 -)

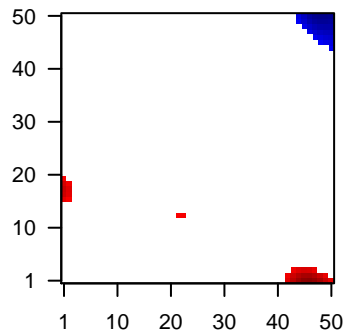
 # genes in genesets = 13152

<FC> = 0
 <t-score> = 0.11
 <p-value> = 0.27
 <fdr> = 0.96

Portrait



Regulated Metagenes



Global Genelist

Rank	ID	log(FC)	fdr	p-value	Description
1	201123_s_at	-1.17	2e-16	3e-13	1 x 43 eukaryotic translation initiation factor 5A [Source:HGNC Syml
2	203645_s_at	-1.47	2e-16	3e-13	8 x 10 CD163 molecule [Source:HGNC Symbol;Acc:HGNC:1631]
3	204755_x_at	2.15	2e-16	3e-13	4 x 18 HLF, PAR bZIP transcription factor [Source:HGNC Symbol;Acc
4	207935_s_at	2.61	2e-16	3e-13	22 x 12 keratin 13 [Source:HGNC Symbol;Acc:HGNC:6415]
5	209125_at	2.44	2e-16	3e-13	22 x 12 keratin 6A [Source:HGNC Symbol;Acc:HGNC:6443]
6	209351_at	2.59	2e-16	3e-13	22 x 12 keratin 14 [Source:HGNC Symbol;Acc:HGNC:6416]
7	210258_at	-1.93	2e-16	3e-13	49 x 40 regulator of G protein signaling 13 [Source:HGNC Symbol;Acc
8	211699_x_at	-1.42	2e-16	3e-13	6 x 29 hemoglobin subunit alpha 2 [Source:HGNC Symbol;Acc:HGN
9	211745_x_at	-1.57	2e-16	3e-13	6 x 29 hemoglobin subunit alpha 2 [Source:HGNC Symbol;Acc:HGN
10	212496_s_at	-1.56	2e-16	3e-13	46 x 38 lysine demethylase 4B [Source:HGNC Symbol;Acc:HGNC:29
11	213796_at	2.38	2e-16	3e-13	22 x 12 small proline rich protein 1A [Source:HGNC Symbol;Acc:HGN
12	213831_at	-1.67	2e-16	3e-13	49 x 16 major histocompatibility complex, class II, DQ alpha 1 [Source
13	214414_x_at	-1.61	2e-16	3e-13	6 x 29 hemoglobin subunit alpha 2 [Source:HGNC Symbol;Acc:HGN
14	214580_x_at	2.54	2e-16	3e-13	22 x 12 keratin 6A [Source:HGNC Symbol;Acc:HGNC:6443]
15	215049_x_at	-1.8	2e-16	3e-13	8 x 10 CD163 molecule [Source:HGNC Symbol;Acc:HGNC:1631]
16	204018_x_at	-1.26	4e-16	9e-12	6 x 29 hemoglobin subunit alpha 2 [Source:HGNC Symbol;Acc:HGN
17	209458_x_at	-1.33	4e-16	9e-12	6 x 29 hemoglobin subunit alpha 2 [Source:HGNC Symbol;Acc:HGN
18	213240_s_at	2.08	9e-16	4e-11	22 x 12 keratin 4 [Source:HGNC Symbol;Acc:HGNC:6441]
19	217232_x_at	-1.4	3e-15	4e-11	6 x 29 hemoglobin subunit beta [Source:HGNC Symbol;Acc:HGNC:
20	209728_at	2.02	5e-15	4e-11	0 x 10 major histocompatibility complex, class II, DR beta 4 [Source:

Global Geneset Analysis

Rank	GSZ	p-value	#all	Geneset
<i>Overexpressed</i>				
1	15.73	NULL	105	Reference:GSE11576
2	11.6	NULL	78	BP cornification
3	11.22	NULL	1813	Chromatin:GSE11576_Fibroblasts
4	11.1	NULL	248	GSEA C2:JAEGER_METASTASIS_DN
5	10.34	NULL	72	BP keratinization
6	10.28	NULL	44	MF antigen binding
7	9.7	NULL	2375	Chromatin:GSE11576_Fibroblasts
8	9.06	NULL	1729	Chromatin:GSE11576_Skeletal_Muscle
9	8.9	NULL	2203	Chromatin:GSE11576_Colon
10	8.86	NULL	52	BP complement activation, classical pathway
11	8.77	NULL	27	CC keratin filament
12	8.61	NULL	51	GSEA C2:HUPER_BREAST_BASAL_VS_LUMINAL_UP
13	8.41	NULL	483	Colon Cancer:TCGA-expr_kmeans_H_UP_Cluster3_DN
14	8.36	NULL	1239	Chromatin:GSE11576_Colon
15	8.31	NULL	2507	Chromatin:GSE11576_Fetal_Lobe_ReprPC
16	8.27	NULL	16	MF immunoglobulin receptor binding
17	8.25	NULL	453	GSEA C2:ONDER_CDH1_TARGETS_2_DN
18	8.18	NULL	2148	Chromatin:GSE11576_Skeletal_Muscle
19	8.1	NULL	46	GSEA C2:BOSCO_EPITHELIAL_DIFFERENTIATION_MODULE
20	8	NULL	85	Lymphoma:GSE11576_DLBCL_UP
<i>Underexpressed</i>				
1	-15.82	NULL	7225	Chromatin:GSE11576_fetal_midbrain_ReprPC
2	-12.81	NULL	5529	Lymphoma:GSE11576_Txn_elongation
3	-12.7	NULL	6099	Chromatin:GSE11576_Tx
4	-12.55	NULL	6244	Chromatin:GSE11576_Fibroblasts
5	-11.88	NULL	7635	Chromatin:GSE11576_monocytes_peripheral_blood_1_TssA
6	-11.8	NULL	8275	Chromatin:GSE11576_Fibroblasts
7	-11.73	NULL	7751	Chromatin:GSE11576_killer_cells_peripheral_blood_1_TssA
8	-11.42	NULL	2325	Chromatin:GSE11576_ZNF_Rpts
9	-11.41	NULL	7835	Chromatin:GSE11576_TssA
10	-11.25	NULL	7489	Chromatin:GSE11576_monocytes_peripheral_blood_5_TxWk
11	-11.19	NULL	5738	Chromatin:GSE11576_monocytes_peripheral_blood_4_Tx
12	-11.16	NULL	5682	Lymphoma:GSE11576_OPP_Weak_promoter
13	-11.1	NULL	9179	Chromatin:GSE11576_Skeletal_Muscle
14	-10.95	NULL	7420	Chromatin:GSE11576_peripheral_blood_1_TssA
15	-10.91	NULL	4528	Chromatin:GSE11576_naive_cells_peripheral_blood_4_Tx
16	-10.69	NULL	3554	Chromatin:GSE11576_ZNFs_Rpts_ESC_Endoderm
17	-10.67	NULL	8641	Chromatin:GSE11576_ESC_Endoderm
18	-10.65	NULL	8143	Chromatin:GSE11576_TxWk
19	-10.64	NULL	5766	Chromatin:GSE11576_killer_cells_peripheral_blood_4_Tx
20	-10.6	NULL	6637	Chromatin:GSE11576_peripheral_blood_5_TxWk

p-values

