

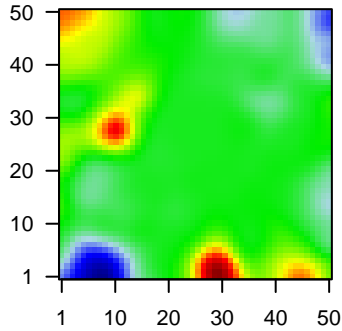
MPI-177

Global Summary

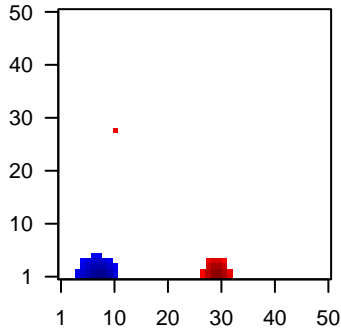
%DE = 0.05
 # genes with fdr < 0.2 = 682 (264 + / 418 -)
 # genes with fdr < 0.1 = 513 (200 + / 313 -)
 # genes with fdr < 0.05 = 423 (169 + / 254 -)
 # genes with fdr < 0.01 = 260 (119 + / 141 -)
 # genes in genesets = 13152

<FC> = 0
 <t-score> = -0.21
 <p-value> = 0.24
 <fdr> = 0.95

Portrait



Regulated Metagenes



Global Genelist

Rank	ID	log(FC)	fdr	p-value	Description
1	39318_at	-2.1	2e-16	1e-13	46 x 49 T cell leukemia/lymphoma 1A [Source:HGNC Symbol;Acc:HGNC:10902]
2	200840_at	-1.16	2e-16	1e-13	33 x 38 lysyl-tRNA synthetase [Source:HGNC Symbol;Acc:HGNC:62]
3	201525_at	2.5	2e-16	1e-13	29 x 0 apolipoprotein D [Source:HGNC Symbol;Acc:HGNC:612]
4	201909_at	-1.72	2e-16	1e-13	43 x 49 ribosomal protein S4, Y-linked 1 [Source:HGNC Symbol;Acc:HGNC:10902]
5	203760_s_at	-2.09	2e-16	1e-13	0 x 20 Src like adaptor [Source:HGNC Symbol;Acc:HGNC:10902]
6	204174_at	-1.43	2e-16	1e-13	49 x 19 arachidonate 5-lipoxygenase activating protein [Source:HGNC Symbol;Acc:HGNC:1643]
7	204581_at	-2.11	2e-16	1e-13	49 x 41 CD22 molecule [Source:HGNC Symbol;Acc:HGNC:1643]
8	205484_at	-1.77	2e-16	1e-13	43 x 44 signaling threshold regulating transmembrane adaptor 1 [Source:HGNC Symbol;Acc:HGNC:1643]
9	206626_x_at	2.85	2e-16	1e-13	10 x 27 SSX family member 1 [Source:HGNC Symbol;Acc:HGNC:116]
10	206640_x_at	3.58	2e-16	1e-13	11 x 28 G antigen 12J [Source:HGNC Symbol;Acc:HGNC:17778]
11	207086_x_at	3.38	2e-16	1e-13	10 x 28 G antigen 12J [Source:HGNC Symbol;Acc:HGNC:17778]
12	207325_x_at	2.61	2e-16	1e-13	10 x 27 MAGE family member A1 [Source:HGNC Symbol;Acc:HGNC:17778]
13	207663_x_at	3.8	2e-16	1e-13	11 x 28 G antigen 12J [Source:HGNC Symbol;Acc:HGNC:17778]
14	207666_x_at	3	2e-16	1e-13	10 x 27 SSX family member 3 [Source:HGNC Symbol;Acc:HGNC:116]
15	207739_s_at	3.42	2e-16	1e-13	10 x 28 G antigen 12J [Source:HGNC Symbol;Acc:HGNC:17778]
16	208155_x_at	3.36	2e-16	1e-13	10 x 28 G antigen 12J [Source:HGNC Symbol;Acc:HGNC:17778]
17	208235_x_at	3.42	2e-16	1e-13	11 x 28 G antigen 12J [Source:HGNC Symbol;Acc:HGNC:17778]
18	208581_x_at	-1.75	2e-16	1e-13	2 x 0 metallothionein 1X [Source:HGNC Symbol;Acc:HGNC:7405]
19	209267_s_at	-1.69	2e-16	1e-13	10 x 13 solute carrier family 39 member 8 [Source:HGNC Symbol;Acc:HGNC:17778]
20	209374_s_at	-1.82	2e-16	1e-13	0 x 22 immunoglobulin heavy constant mu [Source:HGNC Symbol;Acc:HGNC:17778]

Global Geneset Analysis

Rank	GSZ	p-value	#all	Geneset
<i>Overexpressed</i>				
1	11	NULL	13	Immunoglobulin heavy constant mu
2	10.03	NULL	7	Immunoglobulin heavy constant mu
3	9.78	NULL	4	Immunoglobulin heavy constant mu
4	9.15	NULL	5908	Lymphoma
5	8.69	NULL	4559	Lymphoma
6	8.67	NULL	4357	Lymphoma
7	8.53	NULL	5682	Lymphoma
8	7.67	NULL	585	Chr Chr 7
9	7.57	NULL	54	GSEA C23UTIERREZ_CHRONIC_LYMPHOCYTIC_LEUKEMIA_DN
10	7.34	NULL	6368	Colon Cancer
11	7.3	NULL	556	Chr Chr X
12	6.45	NULL	1325	Chr Chr 1
13	6.08	NULL	7	GSEA C23ASAL_TARGETS_OF_CXCR6_AND_PTCH1_DN
14	6.03	NULL	14	GSEA C23MATTIOLI_MULTIPLE_MYELOMA_SUBGROUPS
15	5.77	NULL	5529	Lymphoma
16	5.33	NULL	1764	BP regulation of transcription, DNA-templated
17	5.26	NULL	1655	BP transcription, DNA-templated
18	5.26	NULL	10	BP positive regulation of interleukin-1 beta production
19	5.04	NULL	119	Melanoma
20	4.68	NULL	282	Glioma
<i>Underexpressed</i>				
1	-13.24	NULL	176	GSEA C23PICCALUGA_ANGIOIMMUNOBLASTIC_LYMPHOMA_UP
2	-12.8	NULL	214	Lymphoma
3	-10.43	NULL	333	Chr Chr 22
4	-9.2	NULL	335	GSEA C23SCHUETZ_BREAST_CANCER_DUCTAL_INVASIVE_UP
5	-9.19	NULL	386	GSEA C23RUTELLA_RESPONSE_TO_HGF_VS_CSF2RB_AND_IL4_UP
6	-8.85	NULL	480	Cancer
7	-8.7	NULL	269	Glioma
8	-8.41	NULL	196	HM
9	-8.23	NULL	212	CC
10	-8.12	NULL	78	Melanoma
11	-8.03	NULL	63	GSEA C23ANASTASSIOU_CANCER_MESENCHYMAL_TRANSITION_SIGN
12	-7.92	NULL	10	GSEA C23SASAKI_TARGETS_OF_TP73_AND_TP63
13	-7.91	NULL	67	GSEA C23NAKAYAMA_SOFT_TISSUE_TUMORS_PCA1_UP
14	-7.83	NULL	404	GSEA C23RUTELLA_RESPONSE_TO_HGF_UP
15	-7.75	NULL	223	GSEA C23MCLACHLAN_DENTAL_CARIES_UP
16	-7.74	NULL	231	Glioma
17	-7.66	NULL	132	Colon Cancer
18	-7.4	NULL	14	BP
19	-7.3	NULL	70	GSEA C23KIM_GLI2_TARGETS_UP
20	-7.29	NULL	156	GSEA C23PETROVA_ENDOTHELIUM_LYMPHATIC_VS_BLOOD_DN

p-values

