

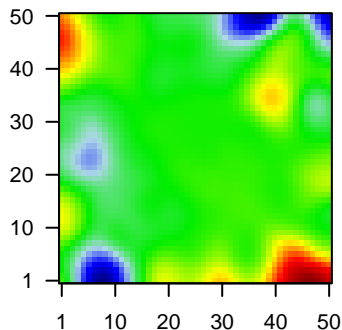
# MPI-176

## Global Summary

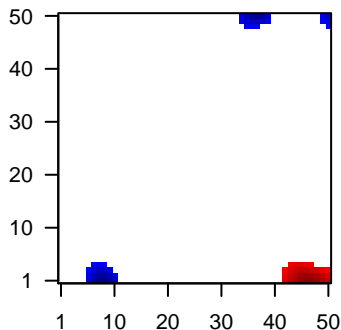
%DE = 0.06  
 # genes with fdr < 0.2 = 494 ( 152 + / 342 - )  
 # genes with fdr < 0.1 = 337 ( 95 + / 242 - )  
 # genes with fdr < 0.05 = 279 ( 75 + / 204 - )  
 # genes with fdr < 0.01 = 152 ( 40 + / 112 - )  
 # genes in genesets = 13152

<FC> = 0  
 <t-score> = 0  
 <p-value> = 0.27  
 <fdr> = 0.94

Portrait



Regulated Metagenes



## Global Genelist

Rank	ID	log(FC)	fdr	p-value	Description
1	39318_at	-1.5	2e-16	7e-13	46 x 49 T cell leukemia/lymphoma 1A [Source:HGNC Symbol;Acc:HGNC:612]
2	201525_at	2.35	2e-16	7e-13	29 x 0 apolipoprotein D [Source:HGNC Symbol;Acc:HGNC:612]
3	209995_s_at	-1.56	2e-16	7e-13	46 x 49 T cell leukemia/lymphoma 1A [Source:HGNC Symbol;Acc:HGNC:612]
4	211719_x_at	-1.8	2e-16	7e-13	8 x 0 fibronectin 1 [Source:HGNC Symbol;Acc:HGNC:3778]
5	212464_s_at	-1.56	2e-16	7e-13	8 x 0 fibronectin 1 [Source:HGNC Symbol;Acc:HGNC:3778]
6	214290_s_at	-1.67	2e-16	7e-13	0 x 21 histone cluster 2 H2A family member a3 [Source:HGNC Symbol;Acc:HGNC:3778]
7	216442_x_at	-1.5	2e-16	7e-13	8 x 0 fibronectin 1 [Source:HGNC Symbol;Acc:HGNC:3778]
8	201850_at	-1.26	5e-15	6e-10	4 x 3 capping actin protein, gelsolin like [Source:HGNC Symbol;Acc:HGNC:612]
9	204141_at	-1.56	3e-14	3e-09	46 x 49 tubulin beta 2A class IIa [Source:HGNC Symbol;Acc:HGNC:612]
10	207534_at	2.15	2e-13	5e-09	1 x 16 MAGE family member B1 [Source:HGNC Symbol;Acc:HGNC:612]
11	210809_s_at	-1.72	4e-13	6e-09	9 x 0 periostin [Source:HGNC Symbol;Acc:HGNC:16953]
12	204318_s_at	-1.66	7e-13	9e-08	37 x 49 G2 and S-phase expressed 1 [Source:HGNC Symbol;Acc:HGNC:612]
13	210495_x_at	-1	7e-12	9e-08	8 x 0 fibronectin 1 [Source:HGNC Symbol;Acc:HGNC:3778]
14	201909_at	-1.28	9e-12	2e-07	43 x 49 ribosomal protein S4, Y-linked 1 [Source:HGNC Symbol;Acc:HGNC:612]
15	209458_x_at	-1.24	2e-11	2e-07	6 x 29 hemoglobin subunit alpha 2 [Source:HGNC Symbol;Acc:HGNC:612]
16	202983_at	-1.21	3e-11	2e-07	33 x 47 helicase like transcription factor [Source:HGNC Symbol;Acc:HGNC:612]
17	204561_x_at	-1.93	4e-11	4e-06	5 x 1 APOC4-APOC2 readthrough (NMD candidate) [Source:HGNC Symbol;Acc:HGNC:612]
18	202954_at	-0.96	2e-10	4e-06	38 x 49 ubiquitin conjugating enzyme E2 C [Source:HGNC Symbol;Acc:HGNC:612]
19	211699_x_at	-1.2	6e-10	4e-06	6 x 29 hemoglobin subunit alpha 2 [Source:HGNC Symbol;Acc:HGNC:612]
20	209728_at	1.81	6e-10	4e-06	0 x 10 major histocompatibility complex, class II, DR beta 4 [Source:HGNC Symbol;Acc:HGNC:612]

## Global Geneset Analysis

Rank	GSZ	p-value	#all	Geneset
<i>Overexpressed</i>				
1	9.22	NULL	3767	Chromatin state 1
2	9.1	NULL	1813	Chromatin state 2
3	8.66	NULL	2144	Chromatin state 3
4	8.52	NULL	693	Chromatin state 4
5	8.33	NULL	3682	Chromatin state 5
6	8.28	NULL	932	Chromatin state 6
7	8.25	NULL	17	BP antigen processing and presentation of peptide or polysaccharide antigen fragments
8	8.15	NULL	18	CC MHC class II protein complex
9	8.07	NULL	3524	Chromatin state 7
10	8.06	NULL	4208	Chromatin state 8
11	7.57	NULL	3938	Chromatin state 9
12	7.26	NULL	2375	Chromatin state 10
13	7.16	NULL	100	Reference signature 2_8_T-cells
14	7.09	NULL	6368	Colon Cancer
15	6.99	NULL	258	Chromatin state 11
16	6.88	NULL	2867	Chromatin state 12
17	6.79	NULL	642	Chromatin state 13
18	6.71	NULL	2240	Chromatin state 14
19	6.45	NULL	143	GSEA C2LEE_DIFFERENTIATING_T_LYMPHOCYTE
20	6.45	NULL	355	Reference signature 1
<i>Underexpressed</i>				
1	-20.98	NULL	319	Melanoma
2	-19.49	NULL	137	GSEA C2ROSTY_CERVICAL_CANCER_PROLIFERATION_CLUSTER
3	-18.32	NULL	115	Glioma
4	-16.62	NULL	431	GSEA C2SOBERT_OLIGODENDROCYTE_DIFFERENTIATION_UP
5	-16.49	NULL	244	GSEA C2KOBAYASHI_EGFR_SIGNALING_24HR_DN
6	-15.86	NULL	14	Cancer
7	-15.26	NULL	254	GSEA C2DUTERTRE ESTRADIOL_RESPONSE_24HR_UP
8	-14.67	NULL	174	GSEA C2GRAHAM_CML_DIVIDING_VS_NORMAL QUIESCENT_UP
9	-14.14	NULL	219	Reference signature 6
10	-13.97	NULL	321	GSEA C2BLUM_RESPONSE_TO_SALIRASIB_DN
11	-13.83	NULL	439	GSEA C2SHEDDEN_LUNG_CANCER_POOR_SURVIVAL_A6
12	-13.71	NULL	192	Lymphoma
13	-13.7	NULL	52	GSEA C2KANG_DOXORUBICIN_RESISTANCE_UP
14	-13.69	NULL	214	Lymphoma
15	-13.59	NULL	92	GSEA C2LEE_EARLY_T_LYMPHOCYTE_UP
16	-13.46	NULL	79	Melanoma
17	-13.39	NULL	141	GSEA C2CHIANG_LIVER_CANCER_SUBCLASS_PROLIFERATION_UP
18	-13.28	NULL	526	GSEA C2MARSON_BOUND_BY_E2F4_UNSTIMULATED
19	-13.26	NULL	117	GSEA C2CHANG_CYCLING_GENES
20	-13.2	NULL	93	GSEA C2CROONQUIST_IL6_DEPRIVATION_DN

p-values

