

MPI-175

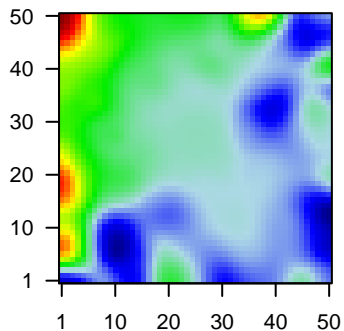
Global Summary

%DE = 0.04
 # genes with fdr < 0.2 = 521 (311 + / 210 -)
 # genes with fdr < 0.1 = 412 (246 + / 166 -)
 # genes with fdr < 0.05 = 264 (166 + / 98 -)
 # genes with fdr < 0.01 = 168 (112 + / 56 -)

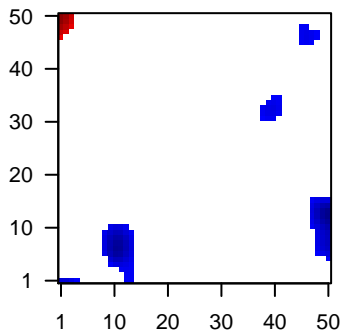
 # genes in genesets = 13152

<FC> = 0
 <t-score> = 0.2
 <p-value> = 0.27
 <fdr> = 0.96

Portrait



Regulated Metagenes



Global Genelist

Rank	ID	log(FC)	fdr	p-value	Description
1	1255_g_at	1.98	2e-16	2e-13	7 x 33 guanylate cyclase activator 1A [Source:HGNC Symbol;Acc:HGNC:1255]
2	201909_at	-1.46	2e-16	2e-13	43 x 49 ribosomal protein S4, Y-linked 1 [Source:HGNC Symbol;Acc:HGNC:201909]
3	202274_at	1.65	2e-16	2e-13	0 x 4 actin, gamma 2, smooth muscle, enteric [Source:HGNC Symbol;Acc:HGNC:202274]
4	205541_s_at	-1.72	2e-16	2e-13	0 x 33 G1 to S phase transition 2 [Source:HGNC Symbol;Acc:HGNC:205541]
5	206018_at	2.09	2e-16	2e-13	6 x 32 forkhead box G1 [Source:HGNC Symbol;Acc:HGNC:206018]
6	206413_s_at	2.57	2e-16	2e-13	43 x 49 T cell leukemia/lymphoma 1B [Source:HGNC Symbol;Acc:HGNC:206413]
7	207534_at	1.98	2e-16	2e-13	1 x 16 MAGE family member B1 [Source:HGNC Symbol;Acc:HGNC:207534]
8	209138_x_at	0.97	2e-16	2e-13	41 x 42 immunoglobulin lambda constant 2 [Source:HGNC Symbol;Acc:HGNC:209138]
9	210546_x_at	2.17	2e-16	2e-13	10 x 27 cancer/testis antigen 1A [Source:HGNC Symbol;Acc:HGNC:210546]
10	211654_x_at	0.91	2e-16	2e-13	1 x 9 major histocompatibility complex, class II, DQ beta 1 [Source:HGNC Symbol;Acc:HGNC:211654]
11	211674_x_at	2.3	2e-16	2e-13	10 x 27 cancer/testis antigen 1A [Source:HGNC Symbol;Acc:HGNC:211674]
12	213416_at	-1.5	2e-16	2e-13	49 x 34
13	213831_at	1.16	2e-16	2e-13	49 x 16 major histocompatibility complex, class II, DQ alpha 1 [Source:HGNC Symbol;Acc:HGNC:213831]
14	214669_x_at	-0.93	2e-16	2e-13	0 x 3
15	214677_x_at	0.81	2e-16	2e-13	41 x 42 immunoglobulin lambda constant 2 [Source:HGNC Symbol;Acc:HGNC:214677]
16	214836_x_at	-1.08	2e-16	2e-13	0 x 3
17	215121_x_at	0.95	2e-16	2e-13	41 x 42 immunoglobulin lambda constant 2 [Source:HGNC Symbol;Acc:HGNC:215121]
18	215379_x_at	0.9	2e-16	2e-13	41 x 42 immunoglobulin lambda constant 2 [Source:HGNC Symbol;Acc:HGNC:215379]
19	215733_x_at	2.08	2e-16	2e-13	10 x 27 cancer/testis antigen 1A [Source:HGNC Symbol;Acc:HGNC:215733]
20	221651_x_at	-1.08	2e-16	2e-13	0 x 3 immunoglobulin kappa constant [Source:HGNC Symbol;Acc:HGNC:221651]

Global Geneset Analysis

Rank	GSZ	p-value	#all	Geneset
<i>Overexpressed</i>				
1	13.22	NULL	219	Reference:SRHUCB B-cells
2	10.34	NULL	319	Melanoma:Berber_wt/wt_melanoma--cells--SpotA
3	10	NULL	4261	Lymphoma:HOPE_Txn_transition
4	9.66	NULL	8406	Chromatin:Cell:peripheral_blood_2_TssAFlnk
5	9.59	NULL	85	Lymphoma:Leukemia_BCL2_DN_BCL6_UP
6	8.85	NULL	56	GSEA:KLEIN_PRIMARY_EFFUSION_LYMPHOMA_DN
7	8.85	NULL	137	GSEA:RSTY_CERVICAL_CANCER_PROLIFERATION_CLUSTER
8	8.7	NULL	18	CC MHC class II protein complex
9	8.69	NULL	5404	Lymphoma:HOPE_Strong_enhancer
10	8.62	NULL	18	Lymphoma:WRIGHT_ABC_UP
11	8.61	NULL	317	Cancer SPANG_BCL6--index2
12	8.56	NULL	3767	Chromatin:Cell:peripheral_blood_6_EnhG
13	8.44	NULL	7833	Chromatin:Cell:peripheral_blood_1_TssA
14	8.43	NULL	5529	Lymphoma:HOPE_Txn_elongation
15	8.42	NULL	17	BP antigen processing and presentation of peptide or polysaccharide
16	8.39	NULL	14	Cancer SOTIRIOU_BREAST_CANCER_GRADE_1_VS_3_UP
17	8.33	NULL	5908	Lymphoma:HOPE_Active_promoter
18	8.29	NULL	693	Chromatin:Cell:peripheral_blood_3_TxFlnk
19	8.27	NULL	115	Glioma WILLSCHEER_GBM_Verhaak--CL_up (C)
20	8.15	NULL	40	BP antigen processing and presentation
<i>Underexpressed</i>				
1	-11.55	NULL	56	GSEA:KLEIN_PRIMARY_EFFUSION_LYMPHOMA_DN
2	-11.23	NULL	75	GSEA:KLEIN_PRIMARY_EFFUSION_LYMPHOMA_DN
3	-11.06	NULL	58	GSEA:KLEIN_PRIMARY_EFFUSION_LYMPHOMA_DN
4	-11.04	NULL	90	BP nuclear-transcribed mRNA catabolic process, nonsense-mediated decay
5	-10.91	NULL	78	GSEA:KLEIN_PRIMARY_EFFUSION_LYMPHOMA_DN
6	-10.73	NULL	110	BP translational initiation
7	-10.72	NULL	64	BP SRP-dependent cotranslational protein targeting to membrane
8	-10.23	NULL	232	BP translation
9	-10.18	NULL	110	GSEA:KLEIN_PRIMARY_EFFUSION_LYMPHOMA_DN
10	-10	NULL	139	CC ribosome
11	-9.94	NULL	109	MF structural constituent of ribosome
12	-9.93	NULL	71	GSEA:KLEIN_PRIMARY_EFFUSION_LYMPHOMA_DN
13	-9.88	NULL	83	BP viral transcription
14	-9.44	NULL	9	GSEA:KLEIN_PRIMARY_EFFUSION_LYMPHOMA_DN
15	-9.23	NULL	77	GSEA:KLEIN_PRIMARY_EFFUSION_LYMPHOMA_DN
16	-8.82	NULL	103	GSEA:KLEIN_PRIMARY_EFFUSION_LYMPHOMA_DN
17	-8.72	NULL	105	Reference:SRHUCB 2_4_Ribosomal proteins
18	-8.63	NULL	174	BP rRNA processing
19	-8.61	NULL	41	CC cytosolic large ribosomal subunit
20	-7.79	NULL	102	Reference:SRHUCB B-cells

p-values

