

MPI-163

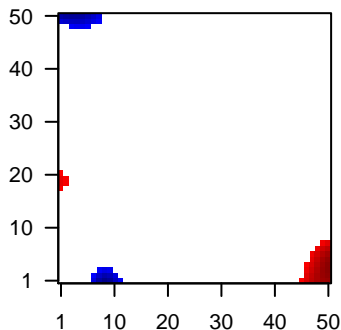
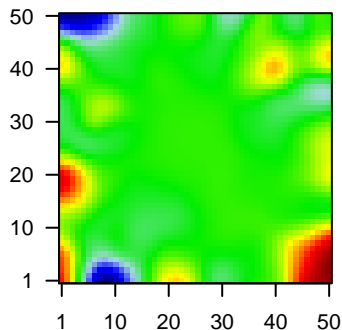
Global Summary

%DE = 0.04
 # genes with fdr < 0.2 = 451 (243 + / 208 -)
 # genes with fdr < 0.1 = 280 (165 + / 115 -)
 # genes with fdr < 0.05 = 223 (130 + / 93 -)
 # genes with fdr < 0.01 = 131 (82 + / 49 -)
 # genes in genesets = 13152

<FC> = 0
 <t-score> = 0.2
 <p-value> = 0.28
 <fdr> = 0.96

Portrait

Regulated Metagenes



Global Genelist

Rank	ID	log(FC)	fdr	p-value	Description
1	39318_at	1.17	2e-16	8e-13	46 x 49 T cell leukemia/lymphoma 1A [Source:HGNC Symbol;Acc:HGNC:10000]
2	209995_s_at	1.26	2e-16	8e-13	46 x 49 T cell leukemia/lymphoma 1A [Source:HGNC Symbol;Acc:HGNC:10000]
3	210809_s_at	-2.02	2e-16	8e-13	9 x 0 periostin [Source:HGNC Symbol;Acc:HGNC:16953]
4	211656_x_at	-1.26	2e-16	8e-13	2 x 9 major histocompatibility complex, class II, DQ beta 1 [Source:HGNC Symbol;Acc:HGNC:10000]
5	215121_x_at	0.85	2e-16	8e-13	41 x 42 immunoglobulin lambda constant 2 [Source:HGNC Symbol;Acc:HGNC:10000]
6	215379_x_at	0.99	2e-16	8e-13	41 x 42 immunoglobulin lambda constant 2 [Source:HGNC Symbol;Acc:HGNC:10000]
7	203290_at	-1.67	4e-16	1e-10	7 x 0 major histocompatibility complex, class II, DQ alpha 2 [Source:HGNC Symbol;Acc:HGNC:10000]
8	219256_s_at	1.29	6e-15	4e-09	2 x 43 SH3 domain and tetratricopeptide repeats 1 [Source:HGNC Symbol;Acc:HGNC:10000]
9	209138_x_at	0.67	2e-13	6e-09	41 x 42 immunoglobulin lambda constant 2 [Source:HGNC Symbol;Acc:HGNC:10000]
10	204793_at	1.68	1e-12	6e-09	3 x 22 G protein-coupled receptor associated sorting protein 1 [Source:HGNC Symbol;Acc:HGNC:10000]
11	209374_s_at	0.74	1e-12	6e-09	0 x 22 immunoglobulin heavy constant mu [Source:HGNC Symbol;Acc:HGNC:10000]
12	219602_s_at	1.67	1e-12	1e-08	9 x 33 piezo type mechanosensitive ion channel component 2 [Source:HGNC Symbol;Acc:HGNC:10000]
13	209875_s_at	-1.42	2e-12	1e-07	8 x 0 secreted phosphoprotein 1 [Source:HGNC Symbol;Acc:HGNC:10000]
14	212464_s_at	-0.87	1e-11	1e-07	8 x 0 fibronectin 1 [Source:HGNC Symbol;Acc:HGNC:3778]
15	218692_at	1.57	2e-11	1e-07	49 x 20 syntabulin [Source:HGNC Symbol;Acc:HGNC:26011]
16	206691_s_at	1.57	2e-11	1e-07	6 x 27 protein disulfide isomerase family A member 2 [Source:HGNC Symbol;Acc:HGNC:10000]
17	207861_at	1.56	3e-11	1e-07	0 x 20 C-C motif chemokine ligand 22 [Source:HGNC Symbol;Acc:HGNC:10000]
18	214677_x_at	0.6	3e-11	1e-07	41 x 42 immunoglobulin lambda constant 2 [Source:HGNC Symbol;Acc:HGNC:10000]
19	204620_s_at	-1.39	4e-11	8e-07	8 x 0 versican [Source:HGNC Symbol;Acc:HGNC:2464]
20	203915_at	0.75	1e-10	8e-07	0 x 0 C-X-C motif chemokine ligand 9 [Source:HGNC Symbol;Acc:HGNC:10000]

Global Geneset Analysis

Rank	GSZ	p-value	#all	Geneset
<i>Overexpressed</i>				
1	8.43	NULL	102	Reference:GSE11553/B-cells
2	8.26	NULL	2380	Chromatin:GSE11553/Colon
3	8.07	NULL	83	Melanoma:TCGA_melanoma_immune_high
4	7.87	NULL	192	Lymphoma:GSE11553/Dark zone signature
5	7.67	NULL	2704	Chromatin:GSE11553/Fibroblasts
6	7.55	NULL	18	Lymphoma:GSE11553/RIGHT_ABC UP
7	7.3	NULL	219	Reference:GSE11553/B-cells
8	7.2	NULL	319	Melanoma:GSE11553/wt/wt_melanoma-cells-SpotA
9	7.14	NULL	186	GSEA C2PENG_RAPAMYCIN_RESPONSE_UP
10	6.97	NULL	239	GSEA C2GINESTIER_BREAST_CANCER_ZNF217_AMPLIFIED_DN
11	6.72	NULL	3682	Chromatin:GSE11553/killer cells peripheral blood_6_EnhG
12	6.71	NULL	3767	Chromatin:GSE11553/peripheral blood_6_EnhG
13	6.62	NULL	85	Lymphoma:GSE11553/DLBCL UP
14	6.59	NULL	693	Chromatin:GSE11553/peripheral blood_3_TxFnk
15	6.41	NULL	22	GSEA C2ONO_AML1_TARGETS_UP
16	6.29	NULL	15	Lymphoma:GSE11553/Polarized immune response
17	6.05	NULL	137	GSEA C2ROSTY_CERVICAL_CANCER_PROLIFERATION_CLUSTER
18	6	NULL	143	GSEA C2LEE_DIFFERENTIATING_T_LYMPHOCYTE
19	5.98	NULL	2563	Chromatin:GSE11553/Colon_Lobe_ZNF
20	5.94	NULL	589	Colon:GSE11553/TCGA-expr_kmeans_E_CIMP.H_UP_Cluster4_DN
<i>Underexpressed</i>				
1	-11.14	NULL	63	GSEA C2ANASTASSIOU_CANCER_MESENCHYMAL_TRANSITION_SIGN
2	-8.75	NULL	196	HM HALLMARK_EPITHELIAL_MESENCHYMAL_TRANSITION
3	-8.48	NULL	60	GSEA C2CROMER_TUMORIGENESIS_UP
4	-8.38	NULL	18	CC MHC class II protein complex
5	-8.28	NULL	17	BP antigen processing and presentation of peptide or polysaccharide
6	-8.09	NULL	60	GSEA C2TURASHVILI_BREAST_LOBULAR_CARCINOMA_VS_LOBULAR
7	-8.06	NULL	58	GSEA C2TURASHVILI_BREAST_LOBULAR_CARCINOMA_VS_DUCTAL_T
8	-7.89	NULL	197	GSEA C2NABA_CORE_MATRISOME
9	-7.72	NULL	253	CC proteinaceous extracellular matrix
10	-7.53	NULL	12	MF MHC class II receptor activity
11	-7.48	NULL	59	GSEA C2PID_INTEGRIN1_PATHWAY
12	-7.41	NULL	212	CC extracellular matrix
13	-7.25	NULL	37	GSEA C2TURASHVILI_BREAST_DUCTAL_CARCINOMA_VS_DUCTAL_NC
14	-7.15	NULL	214	Lymphoma:GSE11553/Stromal signature 1
15	-7.11	NULL	78	Melanoma:GSE11553/CAF-cell specific genes
16	-7.06	NULL	335	GSEA C2SCHUETZ_BREAST_CANCER_DUCTAL_INVASIVE_UP
17	-6.97	NULL	132	Colon:GSE11553/CRC-cluster-a
18	-6.86	NULL	138	GSEA C2ECCHI_GASTRIC_CANCER_ADVANCED_VS_EARLY_UP
19	-6.68	NULL	17	GSEA C2THUM_MIR21_TARGETS_HEART_DISEASE_UP
20	-6.6	NULL	183	BP extracellular matrix organization

p-values

