

MPI-159

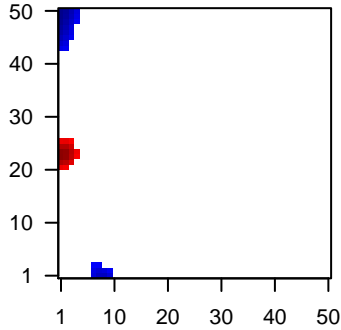
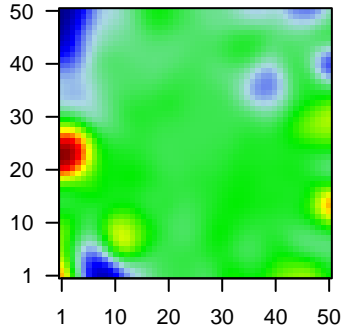
Global Summary

%DE = 0.03
 # genes with fdr < 0.2 = 340 (158 + / 182 -)
 # genes with fdr < 0.1 = 234 (114 + / 120 -)
 # genes with fdr < 0.05 = 208 (102 + / 106 -)
 # genes with fdr < 0.01 = 102 (50 + / 52 -)
 # genes in genesets = 13152

<FC> = 0
 <t-score> = 0.09
 <p-value> = 0.29
 <fdr> = 0.97

Portrait

Regulated Metagenes



Global Genelist

Rank	ID	log(FC)	fdr	p-value	Description
1	203795_s_at	-1.87	2e-16	8e-13	42 x 49 BCL tumor suppressor 7A [Source:HGNC Symbol;Acc:HGNC:10811]
2	204018_x_at	-1.94	2e-16	8e-13	6 x 29 hemoglobin subunit alpha 2 [Source:HGNC Symbol;Acc:HGNC:10811]
3	209458_x_at	-1.71	2e-16	8e-13	6 x 29 hemoglobin subunit alpha 2 [Source:HGNC Symbol;Acc:HGNC:10811]
4	211699_x_at	-1.65	2e-16	8e-13	6 x 29 hemoglobin subunit alpha 2 [Source:HGNC Symbol;Acc:HGNC:10811]
5	212464_s_at	-1.67	2e-16	8e-13	8 x 0 fibronectin 1 [Source:HGNC Symbol;Acc:HGNC:3778]
6	214414_x_at	-1.7	2e-16	8e-13	6 x 29 hemoglobin subunit alpha 2 [Source:HGNC Symbol;Acc:HGNC:10811]
7	204429_s_at	-1.75	2e-14	3e-10	0 x 49 solute carrier family 2 member 5 [Source:HGNC Symbol;Acc:HGNC:10811]
8	217179_x_at	2.31	3e-14	3e-10	11 x 5
9	220377_at	2.29	4e-14	3e-10	5 x 28 family with sequence similarity 30 member A [Source:HGNC Symbol;Acc:HGNC:10811]
10	201850_at	-1.25	5e-14	1e-09	4 x 3 capping actin protein, gelsolin like [Source:HGNC Symbol;Acc:HGNC:10811]
11	217232_x_at	-1.54	2e-13	1e-09	6 x 29 hemoglobin subunit beta [Source:HGNC Symbol;Acc:HGNC:10811]
12	210044_s_at	-1.41	2e-13	3e-08	49 x 39 LYL1, basic helix-loop-helix family member [Source:HGNC Symbol;Acc:HGNC:10811]
13	201559_s_at	-1.69	2e-12	3e-08	2 x 49 chloride intracellular channel 4 [Source:HGNC Symbol;Acc:HGNC:10811]
14	215121_x_at	0.82	3e-12	7e-08	41 x 42 immunoglobulin lambda constant 2 [Source:HGNC Symbol;Acc:HGNC:10811]
15	216442_x_at	-1.06	6e-12	9e-08	8 x 0 fibronectin 1 [Source:HGNC Symbol;Acc:HGNC:3778]
16	211745_x_at	-1.13	1e-11	9e-08	6 x 29 hemoglobin subunit alpha 2 [Source:HGNC Symbol;Acc:HGNC:10811]
17	203440_at	2.05	1e-11	9e-08	2 x 25 cadherin 2 [Source:HGNC Symbol;Acc:HGNC:1759]
18	209396_s_at	-1.43	2e-11	6e-07	3 x 1 chitinase 3 like 1 [Source:HGNC Symbol;Acc:HGNC:1932]
19	207163_s_at	-1.6	9e-11	6e-07	3 x 42 AKT serine/threonine kinase 1 [Source:HGNC Symbol;Acc:HGNC:10811]
20	201909_at	-1.26	1e-10	6e-07	43 x 49 ribosomal protein S4, Y-linked 1 [Source:HGNC Symbol;Acc:HGNC:10811]

Global Geneset Analysis

Rank	GSZ	p-value	#all	Geneset
<i>Overexpressed</i>				
1	11.61	NULL	429	GSEA C2SMID_BREAST_CANCER_NORMAL_LIKE_UP
2	9.02	NULL	265	GSEA C2WALLACE_PROSTATE_CANCER_RACE_UP
3	8.53	NULL	299	GSEA C2DEURIG_T_CELL_PROLYMPHOCTIC_LEUKEMIA_DN
4	8.48	NULL	18	Lymphoma1RIGHT_ABC_UP
5	8.45	NULL	18	CC MHC class II protein complex
6	8.18	NULL	102	Reference1Spleen B-cells
7	8.15	NULL	336	BP immune response
8	8.11	NULL	17	BP antigen processing and presentation of peptide or polysaccharide
9	8.04	NULL	2272	Chromatin11Rpts_MSC_Adipocyte
10	8.01	NULL	12	MHC class II receptor activity
11	7.83	NULL	1503	Chromatin11Rpts_MSC_Adipocyte
12	7.59	NULL	90	GSEA C2GRAHAM_CML_DIVIDING_VS_NORMAL_QUIESCENT_DN
13	7.58	NULL	2993	Chromatin11Rpts_peripheral_blood_9_Het
14	7.4	NULL	589	Colon Cancer1TCGA-expr_kmeans_E_CIMP_H_UP_Cluster4_DN
15	7.34	NULL	689	Chr Chr 3
16	7.19	NULL	1833	Chromatin11Rpts_killer_cells_peripheral_blood_9_Het
17	7.18	NULL	40	BP antigen processing and presentation
18	7.14	NULL	63	BP chemokine-mediated signaling pathway
19	7	NULL	184	Chr Chr 18
20	6.99	NULL	9	GSEA C2CHASSOT_SKIN_WOUND
<i>Underexpressed</i>				
1	-12.6	NULL	3803	Chromatin11Rpts_Fibroblasts
2	-12.17	NULL	2704	Chromatin11Rpts_Fibroblasts
3	-11.2	NULL	214	Lymphoma1ENZ_Stromal signature 1
4	-10.59	NULL	2380	Chromatin11Rpts_1_Colon
5	-10.06	NULL	63	GSEA C2ANASTASSIOU_CANCER_MESENCHYMAL_TRANSITION_SIGNATURE
6	-9.83	NULL	5620	Chromatin11Rpts_Colon
7	-9.37	NULL	4595	Chromatin11Rpts_Melanocytes
8	-9.12	NULL	4672	Chromatin11Rpts_Colon
9	-8.93	NULL	1600	Chromatin11Rpts_Melanocytes
10	-8.9	NULL	2203	Chromatin11Rpts_Colon
11	-8.83	NULL	2563	Chromatin11Rpts_Frontal_Lobe_ZNF
12	-8.26	NULL	4266	Chromatin11Rpts_Neuronal_Progenitor
13	-7.97	NULL	212	CC extracellular matrix
14	-7.81	NULL	7943	Chromatin11Rpts_Colon
15	-7.59	NULL	58	GSEA C2TURASHVILI_BREAST_LOBULAR_CARCINOMA_VS_DUCTAL_CARCINOMA
16	-7.01	NULL	833	Chr Chr 19
17	-6.86	NULL	675	GSEA C2GRADE_COLON_CANCER_UP
18	-6.86	NULL	60	GSEA C2TURASHVILI_BREAST_LOBULAR_CARCINOMA_VS_LOBULAR_CARCINOMA
19	-6.69	NULL	2507	Chromatin11Rpts_Frontal_Lobe_ReprPC
20	-6.65	NULL	18	GSEA C2FARMER_BREAST_CANCER_CLUSTER_5

p-values

