

MPI-151

Global Summary

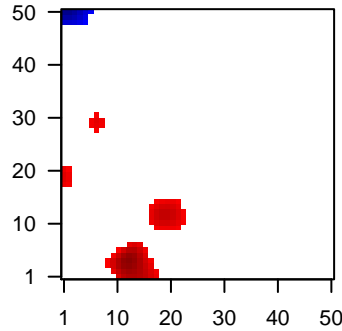
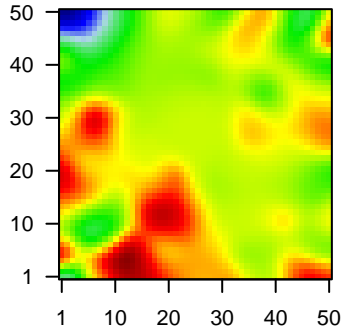
%DE = 0.04
 # genes with fdr < 0.2 = 498 (296 + / 202 -)
 # genes with fdr < 0.1 = 388 (240 + / 148 -)
 # genes with fdr < 0.05 = 266 (176 + / 90 -)
 # genes with fdr < 0.01 = 158 (118 + / 40 -)

 # genes in genesets = 13152

<FC> = 0
 <t-score> = 0.15
 <p-value> = 0.27
 <fdr> = 0.96

Portrait

Regulated Metagenes



Global Genelist

Rank	ID	log(FC)	fdr	p-value	Description
1	202018_s_at	2.72	2e-16	3e-13	11 x 4 lactotransferrin [Source:HGNC Symbol;Acc:HGNC:6720]
2	202376_at	2.18	2e-16	3e-13	34 x 28 serpin family A member 3 [Source:HGNC Symbol;Acc:HGNC:6720]
3	203021_at	2.13	2e-16	3e-13	22 x 12 secretory leukocyte peptidase inhibitor [Source:HGNC Symbx]
4	204259_at	2.26	2e-16	3e-13	6 x 3 matrix metallopeptidase 7 [Source:HGNC Symbol;Acc:HGNC:6720]
5	205272_s_at	2.15	2e-16	3e-13	41 x 10 proline rich protein HaeIII subfamily 2 [Source:HGNC Symbol]
6	206018_at	2.23	2e-16	3e-13	6 x 32 forkhead box G1 [Source:HGNC Symbol;Acc:HGNC:3811]
7	206023_at	2.45	2e-16	3e-13	33 x 46 neuromedin U [Source:HGNC Symbol;Acc:HGNC:7859]
8	206639_x_at	2.49	2e-16	3e-13	21 x 19 histatin 1 [Source:HGNC Symbol;Acc:HGNC:5283]
9	206786_at	3.28	2e-16	3e-13	21 x 19 histatin 3 [Source:HGNC Symbol;Acc:HGNC:5284]
10	206835_at	3.38	2e-16	3e-13	41 x 10 statherin [Source:HGNC Symbol;Acc:HGNC:11369]
11	207534_at	2.09	2e-16	3e-13	1 x 16 MAGE family member B1 [Source:HGNC Symbol;Acc:HGNC:6720]
12	209374_s_at	0.95	2e-16	3e-13	0 x 22 immunoglobulin heavy constant mu [Source:HGNC Symbol;A]
13	212768_s_at	2.85	2e-16	3e-13	17 x 13 olfactomedin 4 [Source:HGNC Symbol;Acc:HGNC:17190]
14	213831_at	-1.65	2e-16	3e-13	49 x 16 major histocompatibility complex, class II, DQ alpha 1 [Source:HGNC Symbol;Acc:HGNC:10514]
15	214456_x_at	2.7	2e-16	3e-13	34 x 28 serum amyloid A2 [Source:HGNC Symbol;Acc:HGNC:10514]
16	218830_at	-1.33	2e-16	3e-13	37 x 33 ribosomal protein L26 like 1 [Source:HGNC Symbol;Acc:HGNC:10514]
17	221671_x_at	0.81	1e-15	2e-11	0 x 3 immunoglobulin kappa constant [Source:HGNC Symbol;Acc:HGNC:10514]
18	209480_at	-1.72	2e-15	5e-11	49 x 16 major histocompatibility complex, class II, DQ beta 1 [Source:HGNC Symbol;Acc:HGNC:10514]
19	202286_s_at	1.98	4e-15	6e-11	22 x 12 tumor associated calcium signal transducer 2 [Source:HGNC Symbol;Acc:HGNC:10514]
20	210397_at	1.97	7e-15	1e-09	34 x 27 defensin beta 1 [Source:HGNC Symbol;Acc:HGNC:2766]

Global Geneset Analysis

Rank	GSZ	p-value	#all	Geneset
<i>Overexpressed</i>				
1	12.67	NULL	148	GSEA C2TURASHVILI_BREAST_DUCTAL_CARCINOMA_VS_DUCTAL_NC
2	11.77	NULL	218	GSEA C2MCBRYAN_PUBERTAL_BREAST_4_5WK_UP
3	11.74	NULL	516	GSEA C2SMID_BREAST_CANCER_LUMINAL_B_DN
4	11.12	NULL	53	GSEA C2TURASHVILI_BREAST_DUCTAL_CARCINOMA_VS_LOBULAR_C
5	10.63	NULL	178	GSEA C2WU_CELL_MIGRATION
6	10.22	NULL	27	GSEA C2RICKMAN_HEAD_AND_NECK_CANCER_D
7	9.68	NULL	608	GSEA C2SMID_BREAST_CANCER_BASAL_UP
8	9.25	NULL	512	GSEA C2WEST_ADRENOCORTICAL_TUMOR_DN
9	9.07	NULL	248	GSEA C2JAEGER_METASTASIS_DN
10	8.91	NULL	19	Reference G16661_Salivary Gland
11	8.75	NULL	35	GSEA C2JZONYI_RESPONSE_TO_LEUKOTRIENE_AND_THROMBIN
12	8.72	NULL	174	GSEA C2MCBRYAN_PUBERTAL_BREAST_3_4WK_UP
13	8.7	NULL	71	GSEA C2TURASHVILI_BREAST_LOBULAR_CARCINOMA_VS_DUCTAL_C
14	8.66	NULL	20	GSEA C2WONG_ENDMETRIUM_CANCER_UP
15	8.56	NULL	453	GSEA C2ZONDER_CDH1_TARGETS_2_DN
16	8.51	NULL	51	GSEA C2HUPER_BREAST_BASAL_VS_LUMINAL_DN
17	8.38	NULL	22	Reference G16661_Salivary Gland
18	8.28	NULL	1799	Chromatin G16661_Salivary Gland
19	8.27	NULL	412	GSEA C2BOQUEST_STEM_CELL_CULTURED_VS_FRESH_UP
20	8.23	NULL	169	GSEA C2ZWANG_CLASS_3_TRANSIENTLY_INDUCED_BY_EGF
<i>Underexpressed</i>				
1	-8.52	NULL	6368	Colon Cancer G16661_Colon mucosa-position_kmeans_F_cecum colon_transverse co
2	-8.56	NULL	6839	Chromatin G16661_Salivary Gland
3	-5.65	NULL	7957	Chromatin G16661_Salivary Gland
4	-5.5	NULL	282	Glioma WILLSCHER_GBM_Verhaak-PNwt & CL_up
5	-5.29	NULL	8245	Chromatin G16661_Salivary Gland
6	-5.19	NULL	8200	Chromatin G16661_Salivary Gland
7	-5.13	NULL	355	Reference G16661_Salivary Gland
8	-5.12	NULL	68	Reference G16661_Salivary Gland
9	-5.08	NULL	8208	Chromatin G16661_Salivary Gland
10	-5.06	NULL	102	Reference G16661_Salivary Gland
11	-4.91	NULL	17	BP antigen processing and presentation of peptide or polysaccharide
12	-4.82	NULL	4528	Chromatin G16661_Salivary Gland
13	-4.81	NULL	1578	TF ICGC_GabPcr2_targets
14	-4.79	NULL	8431	Chromatin G16661_Salivary Gland
15	-4.77	NULL	5716	Chromatin G16661_Salivary Gland
16	-4.75	NULL	18	CC MHC class II protein complex
17	-4.73	NULL	833	Chr Chr 19
18	-4.64	NULL	12	Cancer HLA2_signature
19	-4.62	NULL	3564	TF ICGC_Taf1_targets
20	-4.61	NULL	4208	Chromatin G16661_Salivary Gland

p-values

