

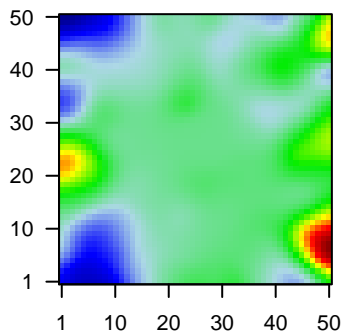
MPI-149

Global Summary

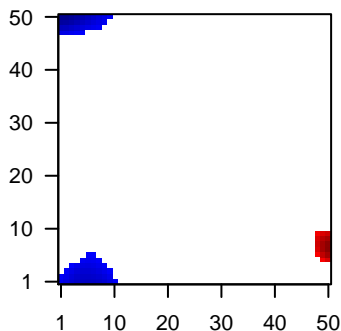
%DE = 0.05
 # genes with fdr < 0.2 = 625 (332 + / 293 -)
 # genes with fdr < 0.1 = 412 (219 + / 193 -)
 # genes with fdr < 0.05 = 343 (177 + / 166 -)
 # genes with fdr < 0.01 = 166 (83 + / 83 -)
 # genes in genesets = 13152

<FC> = 0
 <t-score> = -0.31
 <p-value> = 0.27
 <fdr> = 0.95

Portrait



Regulated Metagenes



Global Genelist

Rank	ID	log(FC)	fdr	p-value	Description
1	201560_at	-1.88	2e-16	9e-13	49 x 38 chloride intracellular channel 4 [Source:HGNC Symbol;Acc:H
2	212592_at	-1.79	2e-16	9e-13	45 x 49 joining chain of multimeric IgA and IgM [Source:HGNC Symb
3	221581_s_at	-1.8	2e-16	9e-13	1 x 8 linker for activation of T cells family member 2 [Source:HGNC
4	221651_x_at	-1.36	2e-16	9e-13	0 x 3 immunoglobulin kappa constant [Source:HGNC Symbol;Acc:I
5	221671_x_at	-1.38	2e-16	9e-13	0 x 3 immunoglobulin kappa constant [Source:HGNC Symbol;Acc:I
6	AFFX-r2-Hs1	2.99	4e-16	2e-11	49 x 47
7	209823_x_at	-1.47	2e-15	3e-11	2 x 8 major histocompatibility complex, class II, DQ beta 1 [Source:
8	214669_x_at	-1.31	3e-15	1e-10	0 x 3
9	AFFX-r2-Hs1	2.86	8e-15	5e-10	49 x 47
10	210895_s_at	-2.26	3e-14	6e-09	4 x 7 CD86 molecule [Source:HGNC Symbol;Acc:HGNC:1705]
11	AFFX-HUMR	2.68	3e-13	1e-08	49 x 47 microRNA 3687-2 [Source:HGNC Symbol;Acc:HGNC:50835]
12	AFFX-r2-Hs2	2.62	1e-12	1e-08	49 x 46
13	AFFX-HUMR	2.6	2e-12	4e-08	49 x 47
14	219259_at	-1.8	4e-12	6e-08	6 x 3 semaphorin 4A [Source:HGNC Symbol;Acc:HGNC:10729]
15	210258_at	-1.49	6e-12	3e-07	49 x 40 regulator of G protein signaling 13 [Source:HGNC Symbol;Ac
16	220068_at	-1.55	2e-11	3e-07	49 x 39 V-set pre-B cell surrogate light chain 3 [Source:HGNC Symt
17	209995_s_at	1.43	4e-11	7e-07	46 x 49 T cell leukemia/lymphoma 1A [Source:HGNC Symbol;Acc:HC
18	AFFX-r2-Hs1	2.4	7e-11	1e-06	49 x 47
19	201563_at	-1.66	1e-10	1e-06	41 x 47 sorbitol dehydrogenase 2, pseudogene [Source:HGNC Symb
20	219518_s_at	-1.4	2e-10	1e-06	49 x 41

Global Geneset Analysis

Rank	GSZ	p-value	#all	Geneset
<i>Overexpressed</i>				
1	16.55	NULL	689	Chr Chr 3
2	11.52	NULL	1174	Colon Cancer_immune_mucosa-position_kmeans_E_transverse_colon_UP_tran
3	10.61	NULL	188	Reference_Signature_3.8_Enzymes
4	10.02	NULL	852	MF nucleic acid binding
5	9.06	NULL	7225	Chromatin_Overlap_fetal_midbrain_ReprPC
6	8.83	NULL	1655	BP transcription, DNA-templated
7	8.82	NULL	18	Lymphocyte_WRIGHT_ABC_UP
8	8.68	NULL	1764	BP regulation of transcription, DNA-templated
9	8.48	NULL	7833	Chromatin_State_peripheral_blood_1_TssA
10	8.46	NULL	1541	MF DNA binding
11	8.38	NULL	713	Chromatin_State_Colon
12	8.22	NULL	218	Reference_Signature_3.8_Tumor-post GC B-cells
13	7.91	NULL	4579	CC nucleus
14	7.6	NULL	8641	Chromatin_State_ESC_Endoderm
15	7.57	NULL	403	Chr Chr 14
16	7.54	NULL	9160	Chromatin_State_Neuronal_Progenitor
17	7.5	NULL	5456	Chromatin_State_Neuronal_Progenitor
18	7.42	NULL	4683	Chromatin_Overlap_fetal_midbrain_HetRpts
19	7.41	NULL	20	Reference_Signature_2.7_Unknown function
20	7.36	NULL	6068	Chromatin_State_ESC_Endoderm
<i>Underexpressed</i>				
1	-13.84	NULL	447	Glioma_ScoV_0.999_Sturm_E4_Mesenchymal_RTK_I_PDGFR_A_DN
2	-13.01	NULL	269	Glioma_ScoV_0.5_Sturm_C3_Mesenchymal_DN
3	-12.37	NULL	71	Melanoma_Tirosin_Macrophage_specific_genes-melanoma
4	-12.21	NULL	589	Colon Cancer_bocke_TCGA-expr_kmeans_E_CIMP_H_UP_Cluster4_DN
5	-11.54	NULL	335	GSEA_C2SCHUETZ_BREAST_CANCER_DUCTAL_INVASIVE_UP
6	-11.33	NULL	386	GSEA_C2RUTELLA_RESPONSE_TO_HGF_VS_CSF2RB_AND_IL4_UP
7	-10.97	NULL	223	GSEA_C2MCLACHLAN_DENTAL_CARIES_UP
8	-10.84	NULL	404	GSEA_C2RUTELLA_RESPONSE_TO_HGF_UP
9	-10.54	NULL	2239	CC extracellular exosome
10	-10.52	NULL	1611	CC extracellular region
11	-10.5	NULL	431	BP immune system process
12	-10.29	NULL	336	BP immune response
13	-10.28	NULL	231	Glioma_WILLSCHER_GBM_Verhaak-CL & MES_up
14	-10.19	NULL	902	GSEA_C2CHEN_METABOLIC_SYNDROM_NETWORK
15	-10.15	NULL	214	Lymphocyte_CEN_Stromal signature 1
16	-10.07	NULL	397	GSEA_C2REN_ALVEOLAR_RHABDOMYOSARCOMA_DN
17	-9.96	NULL	344	GSEA_C2THUM_SYSTOLIC_HEART_FAILURE_UP
18	-9.93	NULL	3210	CC plasma membrane
19	-9.88	NULL	3270	CC integral component of membrane
20	-9.79	NULL	288	Colon Cancer_track_CRC_TCGA_corr_J_msi-h_UP_mss_DN

p-values

