

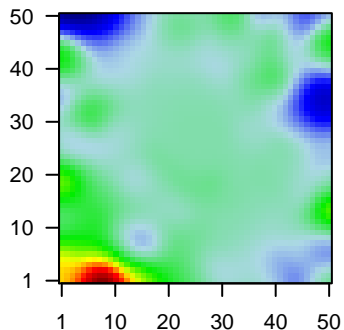
# MPI-145

## Global Summary

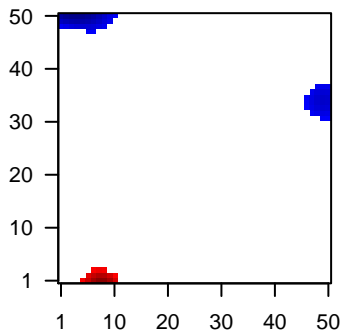
%DE = 0.04  
 # genes with fdr < 0.2 = 404 ( 285 + / 119 - )  
 # genes with fdr < 0.1 = 252 ( 184 + / 68 - )  
 # genes with fdr < 0.05 = 219 ( 160 + / 59 - )  
 # genes with fdr < 0.01 = 120 ( 94 + / 26 - )  
 # genes in genesets = 13152

<FC> = 0  
 <t-score> = 0.09  
 <p-value> = 0.29  
 <fdr> = 0.96

Portrait



Regulated Metagenes



## Global Genelist

Rank	ID	log(FC)	fdr	p-value	Description
1	266_s_at	-1.76	2e-16	1e-12	44 x 49 CD24 molecule [Source:HGNC Symbol;Acc:HGNC:1645]
2	208650_s_at	-1.63	2e-16	1e-12	44 x 49 CD24 molecule [Source:HGNC Symbol;Acc:HGNC:1645]
3	208651_x_at	-1.59	2e-16	1e-12	44 x 49 CD24 molecule [Source:HGNC Symbol;Acc:HGNC:1645]
4	209771_x_at	-1.38	2e-16	1e-12	44 x 49 CD24 molecule [Source:HGNC Symbol;Acc:HGNC:1645]
5	216379_x_at	-1.24	2e-16	1e-12	44 x 49 CD24 molecule [Source:HGNC Symbol;Acc:HGNC:1645]
6	37892_at	2.1	2e-14	3e-09	11 x 0 collagen type XI alpha 1 chain [Source:HGNC Symbol;Acc:HGNC:1645]
7	221671_x_at	0.81	2e-13	1e-07	0 x 3 immunoglobulin kappa constant [Source:HGNC Symbol;Acc:HGNC:1645]
8	221651_x_at	0.75	6e-12	1e-07	0 x 3 immunoglobulin kappa constant [Source:HGNC Symbol;Acc:HGNC:1645]
9	210551_s_at	1.85	2e-11	1e-07	1 x 17 acetylserotonin O-methyltransferase [Source:HGNC Symbol;Acc:HGNC:1645]
10	208056_s_at	-1.51	2e-11	2e-07	44 x 46 CBFA2/RUNX1 translocation partner 3 [Source:HGNC Symbol;Acc:HGNC:1645]
11	215721_at	1.83	3e-11	2e-07	40 x 26 immunoglobulin heavy variable 5-51 [Source:HGNC Symbol;Acc:HGNC:1645]
12	205529_s_at	1.82	4e-11	5e-07	41 x 16 RUNX1 translocation partner 1 [Source:HGNC Symbol;Acc:HGNC:1645]
13	205041_s_at	1.8	6e-11	6e-07	5 x 0 orosomucoid 1 [Source:HGNC Symbol;Acc:HGNC:8498]
14	203290_at	1.55	1e-10	6e-07	7 x 0 major histocompatibility complex, class II, DQ alpha 2 [Source:HGNC Symbol;Acc:HGNC:1645]
15	205040_at	1.77	1e-10	1e-06	5 x 0 orosomucoid 1 [Source:HGNC Symbol;Acc:HGNC:8498]
16	201465_s_at	1.76	2e-10	2e-06	34 x 4 Jun proto-oncogene, AP-1 transcription factor subunit [Source:HGNC Symbol;Acc:HGNC:1645]
17	215076_s_at	0.79	4e-10	2e-06	8 x 0 collagen type III alpha 1 chain [Source:HGNC Symbol;Acc:HGNC:1645]
18	214044_at	1.71	6e-10	2e-06	18 x 22 ryanodine receptor 2 [Source:HGNC Symbol;Acc:HGNC:1041]
19	204475_at	1.7	6e-10	2e-06	7 x 0 matrix metalloproteinase 1 [Source:HGNC Symbol;Acc:HGNC:1645]
20	204457_s_at	1.7	7e-10	2e-06	7 x 0 growth arrest specific 1 [Source:HGNC Symbol;Acc:HGNC:4145]

## Global Geneset Analysis

Rank	GSZ	p-value	#all	Geneset
<i>Overexpressed</i>				
1	19.42	NULL	214	Lymphoma ENZ_Stromal signature 1
2	18.02	NULL	335	GSEA C2SCHUETZ_BREAST_CANCER_DUCTAL_INVASIVE_UP
3	17.37	NULL	63	GSEA C2ANASTASSIOU_CANCER_MESENCHYMAL_TRANSITION_SIGNATURE
4	16.58	NULL	447	Glioma ScoV_0.999_Sturm_E4_Mesenchymal_RTK_I_PDGFR_A_DN
5	16.45	NULL	269	Glioma ScoV_0.5_Sturm_C3_Mesenchymal_DN
6	16.03	NULL	196	HM HALLMARK_EPITHELIAL_MESENCHYMAL_TRANSITION
7	15.05	NULL	132	Colon Cancer Hallmarks_CRC-cluster-a
8	14.82	NULL	288	Colon Cancer Hallmarks_CRC_TCGA_corr_J_msi-h_UP_mss_DN
9	14.5	NULL	78	Melanoma Hallmarks_CAF-cell specific genes
10	14.12	NULL	176	GSEA C2PICCALUGA_ANGIOIMMUNOBLASTIC_LYMPHOMA_UP
11	13.97	NULL	231	Glioma WILLSCHER_GBM_Verhaak-CL & MES_up
12	13.87	NULL	223	GSEA C2MCLACHLAN_DENTAL_CARIES_UP
13	13.83	NULL	54	GSEA C2CROONQUIST_STROMAL_STIMULATION_UP
14	13.76	NULL	212	CC extracellular matrix
15	13.64	NULL	2704	Chromatin States Fibroblasts
16	13.29	NULL	138	GSEA C2VECCI_GASTRIC_CANCER_ADVANCED_VS_EARLY_UP
17	13.19	NULL	247	GSEA C2BOQUEST_STEM_CELL_UP
18	12.94	NULL	480	Cancer Lemcke_Colonc Inflammation
19	12.82	NULL	197	GSEA C2NABA_CORE_MATRISOME
20	12.78	NULL	67	GSEA C2NAKAYAMA_SOFT_TISSUE_TUMORS_PCA1_UP
<i>Underexpressed</i>				
1	-11.41	NULL	310	Reference Signature 3_4_Protein phosphatases
2	-10.94	NULL	4528	Chromatin States naive cells peripheral blood_4_Tx
3	-10.65	NULL	4683	Chromatin States fetal_midbrain_HetRpts
4	-10.07	NULL	5753	Chromatin States peripheral blood_4_Tx
5	-10.04	NULL	5601	Chromatin States cells peripheral blood_4_Tx
6	-9.75	NULL	282	Glioma WILLSCHER_GBM_Verhaak-PNwt & CL_up
7	-9.69	NULL	5529	Lymphoma OPP_Txn_elongation
8	-9.65	NULL	6099	Chromatin States Txs
9	-9.65	NULL	5766	Chromatin States killer cells peripheral blood_4_Tx
10	-9.64	NULL	2325	Chromatin States ZNF_Rpts
11	-9.53	NULL	5716	Chromatin States peripheral blood_4_Tx
12	-9.34	NULL	5527	Chromatin States regulatory cells peripheral blood_4_Tx
13	-9.3	NULL	136	Reference Signature 2_9_Cytoskeleton
14	-9.04	NULL	6368	Colon Cancer Hallmarks_mucosa-position_kmeans_F_cecum_colon_transverse_cancer
15	-8.72	NULL	3554	Chromatin States ZNFs_Rpts_ESC_Endoderm
16	-8.54	NULL	1004	Chromatin States regulatory cells peripheral blood_8_ZNF_Rpts
17	-8.53	NULL	5456	Chromatin States Neuronal_Progenitor
18	-8.42	NULL	417	GSEA C2SHEN_SMARCA2_TARGETS_UP
19	-8.28	NULL	966	GSEA C2KINSEY_TARGETS_OF_EWSR1_FLI1_FUSION_UP
20	-8.25	NULL	6244	Chromatin States Fibroblasts

p-values

