

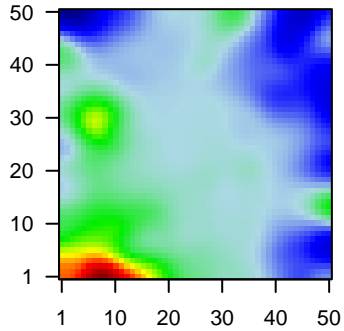
MPI-141

Global Summary

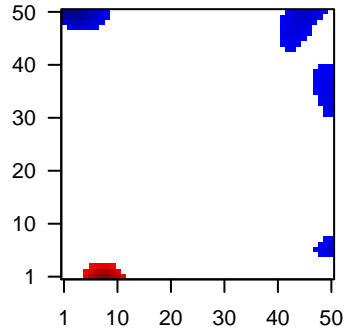
%DE = 0.05
 # genes with $fdr < 0.2$ = 522 (333 + / 189 -)
 # genes with $fdr < 0.1$ = 357 (236 + / 121 -)
 # genes with $fdr < 0.05$ = 280 (187 + / 93 -)
 # genes with $fdr < 0.01$ = 140 (93 + / 47 -)
 # genes in genesets = 13152

<FC> = 0
 <t-score> = -0.01
 <p-value> = 0.27
 <fdr> = 0.95

Portrait



Regulated Metagenes



Global Genelist

Rank	ID	log(FC)	fdr	p-value	Description
1	202859_x_at	2.69	2e-16	5e-13	13 x 0 C-X-C motif chemokine ligand 8 [Source:HGNC Symbol;Acc:HGNC:10404]
2	203509_at	-1.86	2e-16	5e-13	49 x 40 sortilin related receptor 1 [Source:HGNC Symbol;Acc:HGNC:10404]
3	205828_at	2.48	2e-16	5e-13	13 x 0 matrix metalloproteinase 3 [Source:HGNC Symbol;Acc:HGNC:10404]
4	209374_s_at	-1.8	2e-16	5e-13	0 x 22 immunoglobulin heavy constant mu [Source:HGNC Symbol;Acc:HGNC:10404]
5	211430_s_at	1.14	2e-16	5e-13	0 x 4 immunoglobulin heavy constant gamma 2 (G2m marker) [Source:HGNC Symbol;Acc:HGNC:10404]
6	212827_at	-1.44	2e-16	5e-13	41 x 44 immunoglobulin heavy constant mu [Source:HGNC Symbol;Acc:HGNC:10404]
7	214836_x_at	1.77	2e-16	5e-13	0 x 3
8	220068_at	-1.72	2e-16	5e-13	49 x 39 V-set pre-B cell surrogate light chain 3 [Source:HGNC Symbol;Acc:HGNC:10404]
9	221651_x_at	1.07	2e-16	5e-13	0 x 3 immunoglobulin kappa constant [Source:HGNC Symbol;Acc:HGNC:10404]
10	221671_x_at	1	2e-16	5e-13	0 x 3 immunoglobulin kappa constant [Source:HGNC Symbol;Acc:HGNC:10404]
11	212560_at	-1.38	3e-15	6e-11	49 x 40 sortilin related receptor 1 [Source:HGNC Symbol;Acc:HGNC:10404]
12	214974_x_at	2.29	6e-15	1e-10	13 x 0 C-X-C motif chemokine ligand 5 [Source:HGNC Symbol;Acc:HGNC:10404]
13	218076_s_at	-1.21	1e-14	1e-10	0 x 22 Rho GTPase activating protein 17 [Source:HGNC Symbol;Acc:HGNC:10404]
14	204475_at	2.25	2e-14	3e-09	7 x 0 matrix metalloproteinase 1 [Source:HGNC Symbol;Acc:HGNC:10404]
15	200800_s_at	1.29	2e-13	3e-09	7 x 6 heat shock protein family A (Hsp70) member 1A [Source:HGNC Symbol;Acc:HGNC:10404]
16	219518_s_at	-1.27	4e-13	3e-09	49 x 41
17	211634_x_at	2.12	5e-13	3e-09	10 x 5 immunoglobulin heavy variable 1-69 [Source:HGNC Symbol;Acc:HGNC:10404]
18	219497_s_at	-1.25	5e-13	2e-08	49 x 21 B cell CLL/lymphoma 11A [Source:HGNC Symbol;Acc:HGNC:10404]
19	203914_x_at	2.06	2e-12	2e-08	16 x 13 15-hydroxyprostaglandin dehydrogenase [Source:HGNC Symbol;Acc:HGNC:10404]
20	218436_at	2.04	4e-12	2e-08	8 x 28 SIL1 nucleotide exchange factor [Source:HGNC Symbol;Acc:HGNC:10404]

Global Geneset Analysis

Rank	GSZ	p-value	#all	Geneset
<i>Overexpressed</i>				
1	18.12	NULL	480	Cancer Lembecke_Colonic Inflammation
2	16.46	NULL	223	GSEA C2MCLACHLAN_DENTAL_CARIES_UP
3	16	NULL	335	GSEA C2SCHUETZ_BREAST_CANCER_DUCTAL_INVASIVE_UP
4	15.91	NULL	196	HM HALLMARK_EPITHELIAL_MESENCHYMAL_TRANSITION
5	15.85	NULL	589	Colon Cancer_TCGA-expr_kmeans_E_CIMP_H_UP_Cluster4_DN
6	15.36	NULL	214	Lymphoma_TNFRSF25_Stromal signature 1
7	15.02	NULL	190	HM HALLMARK_TNFA_SIGNALING_VIA_NFKB
8	14.79	NULL	447	Glioma_ScoV_0.999_Sturm_E4_Mesenchymal_RTK1_PDGFR_A_DN
9	14.71	NULL	297	Colon Cancer_TCGA_group.over_B_msi-h_UP
10	14.52	NULL	269	Glioma_ScoV_0.5_Sturm_C3_Mesenchymal_DN
11	14.41	NULL	397	GSEA C2REN_ALVEOLAR_RHABDOMYOSARCOMA_DN
12	14.33	NULL	288	Colon Cancer_TCGA_corr_J_msi-h_UP_mss_DN
13	13.31	NULL	1090	CC extracellular space
14	13.15	NULL	219	GSEA C2MCLACHLAN_DENTAL_CARIES_DN
15	13.01	NULL	317	Cancer_SPANG_BCL6-index2
16	12.87	NULL	60	GSEA C2CROMER_TUMORIGENESIS_UP
17	12.44	NULL	63	GSEA C2ANASTASSIOU_CANCER_MESENCHYMAL_TRANSITION_SIGNATURE
18	12.02	NULL	747	GSEA C2NABA_MATRISOME
19	12.02	NULL	102	Reference_Splines_V_B-cells
20	11.91	NULL	231	Glioma_WILLSCHER_GBM_Verhaak-CL & MES_up
<i>Underexpressed</i>				
1	-12.14	NULL	4683	Chromatin_state_fetal_midbrain_HetRpts
2	-10.44	NULL	5456	Chromatin_state_Neural_Progenitor
3	-9.57	NULL	1527	GSEA C2PUJANA_BRCA1_PCC_NETWORK
4	-9.04	NULL	7066	Chromatin_state_fetal_midbrain_ReprPCWk
5	-8.96	NULL	5529	Lymphoma_TNFRSF25_Txn_elongation
6	-8.91	NULL	852	MF nucleic acid binding
7	-8.89	NULL	6068	Chromatin_state_ESC_Endoderm
8	-8.76	NULL	4528	Chromatin_state_naive_cells_peripheral_blood_4_Tx
9	-8.56	NULL	575	GSEA C2CAIRO_HEPATOBLASTOMA_CLASSES_UP
10	-8.53	NULL	3554	Chromatin_state_H3K9me3_Rpts_ESC_Endoderm
11	-8.43	NULL	3007	Chromatin_state_ZNF_Neural_Progenitor
12	-8.36	NULL	5716	Chromatin_state_peripheral_blood_4_Tx
13	-7.85	NULL	726	GSEA C2PUJANA_CHEK2_PCC_NETWORK
14	-7.82	NULL	6099	Chromatin_state_Gi6e_Tx
15	-7.69	NULL	7225	Chromatin_state_fetal_midbrain_ReprPC
16	-7.63	NULL	2325	Chromatin_state_ZNF_Rpts
17	-7.38	NULL	1312	GSEA C2PUJANA_ATM_PCC_NETWORK
18	-7.36	NULL	5601	Chromatin_state_naive_cells_peripheral_blood_4_Tx
19	-7.3	NULL	56	GSEA C2KLEIN_PRIMARY_EFFUSION_LYMPHOMA_DN
20	-7.27	NULL	6368	Colon Cancer_TCGA-pointe_mucosa-position_kmeans_F_cecum_colon_transverse_c

