

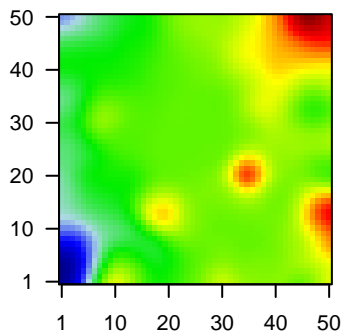
# MPI-140

## Global Summary

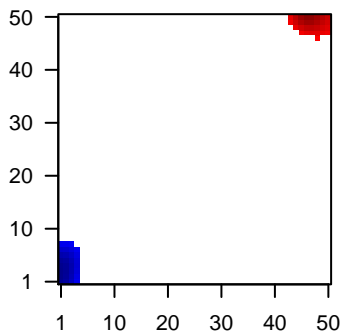
%DE = 0.04  
 # genes with fdr < 0.2 = 401 ( 126 + / 275 - )  
 # genes with fdr < 0.1 = 321 ( 97 + / 224 - )  
 # genes with fdr < 0.05 = 239 ( 76 + / 163 - )  
 # genes with fdr < 0.01 = 130 ( 48 + / 82 - )  
 # genes in genesets = 13152

<FC> = 0  
 <t-score> = -0.04  
 <p-value> = 0.28  
 <fdr> = 0.96

### Portrait



### Regulated Metagenes



## Global Genelist

Rank	ID	log(FC)	fdr	p-value	Description
1	203915_at	-1.41	2e-16	2e-12	0 x 0 C-X-C motif chemokine ligand 9 [Source:HGNC Symbol;Acc:HGNC:11755]
2	220191_at	3.04	2e-16	2e-12	34 x 20 gastrin 1 [Source:HGNC Symbol;Acc:HGNC:23217]
3	205009_at	2.76	9e-16	5e-11	17 x 13 trefoil factor 1 [Source:HGNC Symbol;Acc:HGNC:11755]
4	204351_at	2.68	5e-15	5e-11	20 x 12 S100 calcium binding protein P [Source:HGNC Symbol;Acc:HGNC:11755]
5	210839_s_at	-1.68	7e-15	5e-11	2 x 3 ectonucleotide pyrophosphatase/phosphodiesterase 2 [Source:HGNC Symbol;Acc:HGNC:6622]
6	206334_at	2.66	8e-15	8e-11	34 x 20 lipase F, gastric type [Source:HGNC Symbol;Acc:HGNC:6622]
7	214476_at	2.64	1e-14	8e-11	34 x 20 trefoil factor 2 [Source:HGNC Symbol;Acc:HGNC:11756]
8	215176_x_at	1.85	2e-14	1e-09	10 x 5 immunoglobulin kappa variable 1-39 (gene/pseudogene) [Source:HGNC Symbol;Acc:HGNC:11755]
9	208018_s_at	-1.59	8e-14	4e-09	0 x 4 HCK proto-oncogene, Src family tyrosine kinase [Source:HGNC Symbol;Acc:HGNC:11755]
10	211634_x_at	2.49	4e-13	4e-09	10 x 5 immunoglobulin heavy variable 1-69 [Source:HGNC Symbol;Acc:HGNC:11755]
11	219259_at	-1.74	5e-13	3e-08	6 x 3 semaphorin 4A [Source:HGNC Symbol;Acc:HGNC:10729]
12	204533_at	-1.52	2e-12	3e-08	0 x 0 C-X-C motif chemokine ligand 10 [Source:HGNC Symbol;Acc:HGNC:11755]
13	214290_s_at	-1.27	4e-12	3e-08	0 x 21 histone cluster 2 H2A family member a3 [Source:HGNC Symbol;Acc:HGNC:11755]
14	220423_at	-1.48	7e-12	3e-08	2 x 3 phospholipase A2 group IID [Source:HGNC Symbol;Acc:HGNC:11755]
15	205261_at	2.33	1e-11	3e-08	34 x 20 progastresin [Source:HGNC Symbol;Acc:HGNC:8890]
16	214385_s_at	2.33	1e-11	3e-08	34 x 20 mucin 5AC, oligomeric mucus/gel-forming [Source:HGNC Symbol;Acc:HGNC:11755]
17	203104_at	-1.64	1e-11	3e-08	1 x 2 colony stimulating factor 1 receptor [Source:HGNC Symbol;Acc:HGNC:11755]
18	200648_s_at	-1.43	1e-11	3e-08	2 x 0 glutamate-ammonia ligase [Source:HGNC Symbol;Acc:HGNC:11755]
19	210563_x_at	-1.27	1e-11	4e-07	0 x 4 CASP8 and FADD like apoptosis regulator [Source:HGNC Symbol;Acc:HGNC:11755]
20	209310_s_at	-1.6	3e-11	1e-06	0 x 4 caspase 4 [Source:HGNC Symbol;Acc:HGNC:1505]

## Global Geneset Analysis

Rank	GSZ	p-value	#all	Geneset
<i>Overexpressed</i>				
1	11.29	NULL	99	Lymphoma_Glioma_BL_UP
2	9.87	NULL	575	GSEA_C2CAIRO_HEPATOBLASTOMA_CLASSES_UP
3	9.74	NULL	726	GSEA_C2FUJANA_CHEK2_PCC_NETWORK
4	9.55	NULL	42	GSEA_C2HUMMEL_BURKITT'S_LYMPHOMA_UP
5	9.29	NULL	1527	GSEA_C2FUJANA_BRCA1_PCC_NETWORK
6	9.09	NULL	321	GSEA_C2BLUM_RESPONSE_TO_SALIRASIB_DN
7	8.97	NULL	561	Colon_CancerTrack_CRC_TCGA_group.over_C_normal_DN
8	8.7	NULL	280	GSEA_C2MANALO_HYPOXIA_DN
9	8.51	NULL	244	GSEA_C2KOBAYASHI_EGFR_SIGNALING_24HR_DN
10	8.33	NULL	187	HM HALLMARK_E2F_TARGETS
11	8.32	NULL	192	Lymphoma_Microtacta_Dark_zone_signature
12	8.27	NULL	431	GSEA_C2GOBERT_OLIGODENDROCYTE_DIFFERENTIATION_UP
13	8.18	NULL	6	Reference_Geneset_Stomach
14	8.18	NULL	137	GSEA_C2ROSTY_CERVICAL_CANCER_PROLIFERATION_CLUSTER
15	7.85	NULL	319	Melanoma_Gerber_wt/wt_melanoma-cells-SpotA
16	7.71	NULL	1161	MF RNA binding
17	7.47	NULL	254	GSEA_C2DUTERTRE_ESTRADIOL_RESPONSE_24HR_UP
18	7.28	NULL	115	Glioma_WILLSCHER_GBM_Verhaak-CL_up (C)
19	7.26	NULL	22	BP digestion
20	7.24	NULL	294	GSEA_C2WONG_EMBRYONIC_STEM_CELL_CORE
<i>Underexpressed</i>				
1	-21.66	NULL	589	Colon_CancerTrack_TCGA-expr_kmeans_E_CIMP.H_UP_Cluster4_DN
2	-21.26	NULL	85	Lymphoma_Glioma_DLCLC_UP
3	-20.04	NULL	447	Glioma_ScoV_0.999_Sturm_E4_Mesenchymal_RTK_I_PDGFR_A_DN
4	-19.85	NULL	317	Cancer_SPANG_BCL6-index2
5	-17.79	NULL	102	Reference_Geneset_T_H17_B-cells
6	-16.58	NULL	71	Melanoma_Mirosh_Macrophage_specific_genes-melanoma
7	-14.86	NULL	186	Cancer_SPANG_LPS-index2
8	-14.33	NULL	265	GSEA_C2WALLACE_PROSTATE_CANCER_RACE_UP
9	-13.37	NULL	223	GSEA_C2MCLACHLAN_DENTAL_CARIES_UP
10	-13.07	NULL	78	Melanoma_Mirosh_expression_higher_in_CAFs_than_in_T-cells
11	-13	NULL	355	Reference_Geneset_Human_immune_system
12	-13	NULL	88	GSEA_C2WIELAND_UP_BY_HBV_INFECTION
13	-12.91	NULL	62	Lymphoma_Monti_Host_response_cluster
14	-12.71	NULL	194	GSEA_C2JAATINEN_HEMATOPOIETIC_STEM_CELL_DN
15	-12.49	NULL	42	Immunology_Mangelova_immune-metagenes-TGD
16	-12.38	NULL	404	GSEA_C2RUTELLA_RESPONSE_TO_HGF_UP
17	-12.22	NULL	166	HM HALLMARK_INTERFERON_GAMMA_RESPONSE
18	-12.1	NULL	431	BP immune system process
19	-11.85	NULL	78	GSEA_C2FLECHNER_BIOPSY_KIDNEY_TRANSPLANT_REJECTED_VS...
20	-11.83	NULL	229	GSEA_C2QI_PLASMACYTOMA_UP

### p-values

