

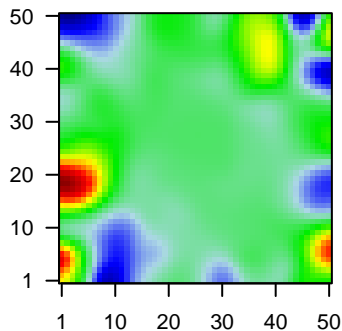
MPI-135

Global Summary

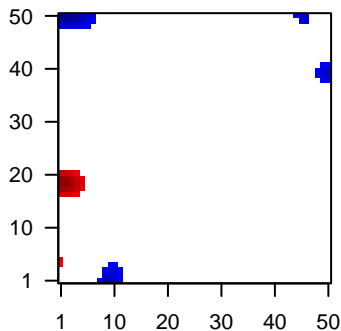
%DE = 0.06
 # genes with $fdr < 0.2$ = 611 (338 + / 273 -)
 # genes with $fdr < 0.1$ = 509 (286 + / 223 -)
 # genes with $fdr < 0.05$ = 365 (211 + / 154 -)
 # genes with $fdr < 0.01$ = 246 (144 + / 102 -)
 # genes in genesets = 13152

<FC> = 0
 <t-score> = 0.07
 <p-value> = 0.24
 <fdr> = 0.94

Portrait



Regulated Metagenes



Global Genelist

Rank	ID	log(FC)	fdr	p-value	Description
1	AFFX-r2-Hs1	2.09	2e-16	2e-13	49 x 47
2	201909_at	-1.31	2e-16	2e-13	43 x 49 ribosomal protein S4, Y-linked 1 [Source:HGNC Symbol;Acc:HGNC:10411]
3	203509_at	-1.61	2e-16	2e-13	49 x 40 sortilin related receptor 1 [Source:HGNC Symbol;Acc:HGNC:10411]
4	204489_s_at	1.49	2e-16	2e-13	0 x 4 CD44 molecule (Indian blood group) [Source:HGNC Symbol;Acc:HGNC:10411]
5	204490_s_at	1.09	2e-16	2e-13	0 x 4 CD44 molecule (Indian blood group) [Source:HGNC Symbol;Acc:HGNC:10411]
6	204753_s_at	2.29	2e-16	2e-13	2 x 18 HLF, PAR bZIP transcription factor [Source:HGNC Symbol;Acc:HGNC:10411]
7	204755_x_at	2.31	2e-16	2e-13	4 x 18 HLF, PAR bZIP transcription factor [Source:HGNC Symbol;Acc:HGNC:10411]
8	208650_s_at	-1.78	2e-16	2e-13	44 x 49 CD24 molecule [Source:HGNC Symbol;Acc:HGNC:1645]
9	209771_x_at	-1.02	2e-16	2e-13	44 x 49 CD24 molecule [Source:HGNC Symbol;Acc:HGNC:1645]
10	209835_x_at	1.1	2e-16	2e-13	0 x 4 CD44 molecule (Indian blood group) [Source:HGNC Symbol;Acc:HGNC:10411]
11	210809_s_at	-1.81	2e-16	2e-13	9 x 0 periostin [Source:HGNC Symbol;Acc:HGNC:16953]
12	212014_x_at	1.16	2e-16	2e-13	0 x 4 CD44 molecule (Indian blood group) [Source:HGNC Symbol;Acc:HGNC:10411]
13	212560_at	-1.72	2e-16	2e-13	49 x 40 sortilin related receptor 1 [Source:HGNC Symbol;Acc:HGNC:10411]
14	213497_at	2.16	2e-16	2e-13	3 x 16 ankyrin repeat and BTB domain containing 2 [Source:HGNC Symbol;Acc:HGNC:10411]
15	214777_at	2.84	2e-16	2e-13	10 x 5 immunoglobulin kappa variable 4-1 [Source:HGNC Symbol;Acc:HGNC:10411]
16	215379_x_at	-1.12	2e-16	2e-13	41 x 42 immunoglobulin lambda constant 2 [Source:HGNC Symbol;Acc:HGNC:10411]
17	216379_x_at	-1.13	2e-16	2e-13	44 x 49 CD24 molecule [Source:HGNC Symbol;Acc:HGNC:1645]
18	216557_x_at	2.05	2e-16	2e-13	10 x 5 immunoglobulin heavy variable 3-21 [Source:HGNC Symbol;Acc:HGNC:10411]
19	217281_x_at	2.15	2e-16	2e-13	10 x 5 immunoglobulin heavy variable 3-7 [Source:HGNC Symbol;Acc:HGNC:10411]
20	210916_s_at	1.3	4e-16	5e-12	0 x 4 CD44 molecule (Indian blood group) [Source:HGNC Symbol;Acc:HGNC:10411]

Global Geneset Analysis

Rank	GSZ	p-value	#all	Geneset
<i>Overexpressed</i>				
1	10.6	NULL	85	Lymphoma_Tha_DLBC_L UP
2	10.08	NULL	602	Colon_Cancer_ReTrack_CRC_TCGA_corr_R_normal_DN
3	9.68	NULL	85	Lymphoma_Merkel_BCL2_DN_BCL6 UP
4	9.67	NULL	1325	Chr Chr 1
5	9.12	NULL	728	GSEA_C2KRIGE_RESPONSE_TO_TOSEDOSTAT_24HR_DN
6	8.51	NULL	561	Colon_Cancer_ReTrack_CRC_TCGA_group.over_C_normal_DN
7	8.5	NULL	22	Lymphoma_TAVE_NFKB BL DN
8	8.14	NULL	280	GSEA_C2MANALO_HYPOXIA_DN
9	7.87	NULL	239	GSEA_C2GINESTIER_BREAST_CANCER_ZNF217_AMPLIFIED_DN
10	7.69	NULL	594	GSEA_C2ASTOWSKA_NEUROBLASTOMA_COPY_NUMBER_DN
11	7.62	NULL	651	GSEA_C2KRIGE_RESPONSE_TO_TOSEDOSTAT_6HR_DN
12	7.52	NULL	18	Lymphoma_RIGHT_ABC UP
13	7.52	NULL	5682	Lymphoma_OPP_Weak_promoter
14	7.35	NULL	173	Lymphoma_tictora_Light zone signature
15	7.31	NULL	3803	Chromatin_States_Fibroblasts
16	7.25	NULL	2704	Chromatin_States_Fibroblasts
17	7.22	NULL	233	GSEA_C2PENG_RAPAMYCIN_RESPONSE_DN
18	7.09	NULL	14	GSEA_C2HUMMEL_BURKITTIS_LYMPHOMA_DN
19	7.07	NULL	314	GSEA_C2PENG_GLUTAMINE_DEPRIVATION_DN
20	7.01	NULL	10	Lymphoma_tASCQUE_ABC UP
<i>Underexpressed</i>				
1	-11.76	NULL	263	Lymphoma_SPANG_CD40 6hrs UP
2	-10.37	NULL	17	BP antigen processing and presentation of peptide or polysaccharide antigen fragments
3	-10.16	NULL	18	CC MHC class II protein complex
4	-9.06	NULL	12	MF MHC class II receptor activity
5	-8.42	NULL	40	BP antigen processing and presentation
6	-7.8	NULL	335	GSEA_C2SCHUETZ_BREAST_CANCER_DUCTAL_INVASIVE_UP
7	-7.34	NULL	63	GSEA_C2ANASTASSIOU_CANCER_MESENCHYMAL_TRANSITION_SIGN
8	-7.14	NULL	9	GSEA_C2RUNNE_GENDER_EFFECT_UP
9	-7.13	NULL	96	Lymphoma_SPANG_LPS 6hrs UP
10	-7.13	NULL	197	GSEA_C2NABA_CORE_MATRISOME
11	-6.85	NULL	28	CC clathrin-coated endocytic vesicle membrane
12	-6.78	NULL	16	GSEA_C2ZHAN_LATE_DIFFERENTIATION_GENES_DN
13	-6.52	NULL	70	GSEA_C2KIM_GLIS2_TARGETS_UP
14	-6.51	NULL	247	GSEA_C2BOQUEST_STEM_CELL_UP
15	-6.41	NULL	23	CC integral component of luminal side of endoplasmic reticulum membrane
16	-6.38	NULL	138	GSEA_C2VECCHI_GASTRIC_CANCER_ADVANCED_VS_EARLY_UP
17	-6.33	NULL	136	GSEA_C2NABA_ECM_GLYCOPROTEINS
18	-6.32	NULL	8	Immunity_community_HLA-class-II
19	-6.26	NULL	669	Chr Chr 6
20	-6.23	NULL	61	GSEA_C2BASSO_CD40_SIGNALING_DN

p-values

