

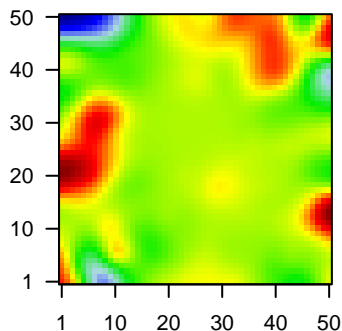
MPI-133

Global Summary

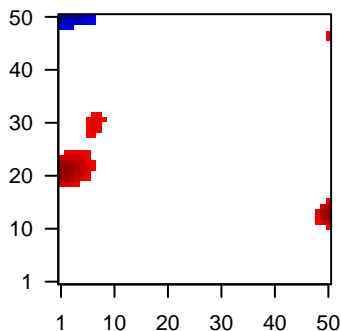
%DE = 0.04
 # genes with fdr < 0.2 = 482 (234 + / 248 -)
 # genes with fdr < 0.1 = 354 (184 + / 170 -)
 # genes with fdr < 0.05 = 226 (123 + / 103 -)
 # genes with fdr < 0.01 = 156 (87 + / 69 -)
 # genes in genesets = 13152

<FC> = 0
 <t-score> = 0
 <p-value> = 0.28
 <fdr> = 0.96

Portrait



Regulated Metagenes



Global Genelist

Rank	ID	log(FC)	fdr	p-value	Description
1	396_f_at	-2.24	2e-16	8e-13	44 x 0 erythropoietin receptor [Source:HGNC Symbol;Acc:HGNC:34]
2	203936_s_at	-2.09	2e-16	8e-13	5 x 3 matrix metalloproteinase 9 [Source:HGNC Symbol;Acc:HGNC:62]
3	206680_at	2.58	2e-16	8e-13	35 x 26 CD5 molecule like [Source:HGNC Symbol;Acc:HGNC:1690]
4	209201_x_at	-1.37	2e-16	8e-13	7 x 48 C-X-C motif chemokine receptor 4 [Source:HGNC Symbol;Acc:HGNC:1932]
5	209396_s_at	-2.18	2e-16	8e-13	3 x 1 chitinase 3 like 1 [Source:HGNC Symbol;Acc:HGNC:1932]
6	217370_x_at	-1.37	2e-16	8e-13	1 x 45 FUS RNA binding protein [Source:HGNC Symbol;Acc:HGNC:1932]
7	220635_at	2.46	4e-16	5e-12	4 x 19 psoriasis susceptibility 1 candidate 2 [Source:HGNC Symbol;Acc:HGNC:1759]
8	203440_at	2.45	7e-16	5e-11	2 x 25 cadherin 2 [Source:HGNC Symbol;Acc:HGNC:1759]
9	219259_at	-1.67	5e-15	5e-11	6 x 3 semaphorin 4A [Source:HGNC Symbol;Acc:HGNC:10729]
10	201559_s_at	-1.87	6e-15	2e-10	2 x 49 chloride intracellular channel 4 [Source:HGNC Symbol;Acc:HGNC:1932]
11	207391_s_at	-1.61	1e-14	3e-10	7 x 46 phosphatidylinositol-4-phosphate 5-kinase type 1 alpha [Source:HGNC Symbol;Acc:HGNC:1932]
12	206881_s_at	2.3	3e-14	6e-10	4 x 20 leukocyte immunoglobulin like receptor A3 [Source:HGNC Symbol;Acc:HGNC:1932]
13	209806_at	1.16	6e-14	1e-09	0 x 20
14	200866_s_at	-1.02	1e-13	2e-09	6 x 8 prosaposin [Source:HGNC Symbol;Acc:HGNC:9498]
15	215121_x_at	0.85	3e-13	2e-09	41 x 42 immunoglobulin lambda constant 2 [Source:HGNC Symbol;Acc:HGNC:1932]
16	204484_at	-1.55	3e-13	3e-09	2 x 15 phosphatidylinositol-4-phosphate 3-kinase catalytic subunit [Source:HGNC Symbol;Acc:HGNC:1932]
17	214290_s_at	1.16	6e-13	3e-09	0 x 21 histone cluster 2 H2A family member a3 [Source:HGNC Symbol;Acc:HGNC:1932]
18	211919_s_at	-1.03	6e-13	3e-09	8 x 48 C-X-C motif chemokine receptor 4 [Source:HGNC Symbol;Acc:HGNC:1932]
19	220359_s_at	2.16	9e-13	3e-09	22 x 20 cAMP regulated phosphoprotein 21 [Source:HGNC Symbol;Acc:HGNC:1932]
20	209398_at	1.71	1e-12	3e-09	0 x 20 histone cluster 1 H1 family member c [Source:HGNC Symbol;Acc:HGNC:1932]

Global Geneset Analysis

Rank	GSZ	p-value	#all	Geneset
<i>Overexpressed</i>				
1	14.63	NULL	42	GSEA C2REACTOME_RNA_POL_I_PROMOTER_OPENING
2	14.16	NULL	70	CC nucleosome
3	13.64	NULL	92	GSEA C2KEGG_SYSTEMIC_LUPUS_ERYTHEMATOSUS
4	12.78	NULL	62	GSEA C2REACTOME_RNA_POL_I_TRANSCRIPTION
5	12.23	NULL	36	GSEA C2REACTOME_PACKAGING_OF_TELOMERE_ENDS
6	12.01	NULL	62	GSEA C2REACTOME_MEIOTIC_RECOMBINATION
7	11.67	NULL	46	GSEA C2REACTOME_DEPOSITION_OF_NEW_CENPA_CONTAINING_NU
8	11.35	NULL	60	GSEA C2REACTOME_AMYLOIDS
9	11.2	NULL	61	GSEA C2REACTOME_TELOMERE_MAINTENANCE
10	11.03	NULL	833	Chr Chr 19
11	10.3	NULL	91	GSEA C2REACTOME_RNA_POL_I_RNA_POL_III_AND_MITOCHONDRIA
12	10.25	NULL	44	MF antigen binding
13	9.67	NULL	88	GSEA C2REACTOME_MEIOSIS
14	9.66	NULL	78	BP nucleosome assembly
15	9.53	NULL	57	GSEA C2REACTOME_MEIOTIC_SYNAPSIS
16	9.03	NULL	98	GSEA C2REACTOME_CHROMOSOME_MAINTENANCE
17	8.72	NULL	32	Reference C2Signatures_1,1_Plasma Cells
18	8.44	NULL	39	BP complement activation
19	8.3	NULL	17	BP antigen processing and presentation of peptide or polysaccharide
20	8.21	NULL	18	CC MHC class II protein complex
<i>Underexpressed</i>				
1	-14.51	NULL	214	Lymphocyte ENZ_Stromal signature 1
2	-10.98	NULL	282	Glioma WILLSCHER_GBM_Verhaak-PNwt & CL_UP
3	-10.21	NULL	7581	Chromatin Signatures_Melanocytes
4	-9.92	NULL	7078	Chromatin Signatures_ESC_Mesoderm
5	-9.48	NULL	7066	Chromatin Signatures_fetal_midbrain_ReprPCWk
6	-9.35	NULL	136	Reference C2Signatures_2,9_Cytoskeleton
7	-9.1	NULL	6114	Chromatin Signatures_Fibroblasts
8	-9.08	NULL	6244	Chromatin Signatures_Fibroblasts
9	-8.9	NULL	58	GSEA C2TURASHVILI_BREAST_LOBULAR_CARCINOMA_VS_DUCTAL_L
10	-8.87	NULL	63	GSEA C2ANASTASSIOU_CANCER_MESENCHYMAL_TRANSITION_SIGN
11	-8.42	NULL	6582	Chromatin Signatures_Colon
12	-8.42	NULL	7583	Chromatin Signatures_Skeletal_Muscle
13	-8.4	NULL	405	GSEA C2SENESE_HDAC3_TARGETS_UP
14	-8.09	NULL	132	Colon Cancer Signatures_CRC-cluster-a
15	-7.78	NULL	6791	Chromatin Signatures_ESC_Endoderm
16	-7.7	NULL	3838	Chromatin Signatures_ESC_Mesoderm
17	-7.69	NULL	6368	Colon Cancer Signatures_mucosa-position_kmeans_F_cecum_colon_transverse
18	-7.67	NULL	673	GSEA C2SCHLOSSER_SERUM_RESPONSE_DN
19	-7.37	NULL	26	GSEA C2URS_ADIPOCYTE_DIFFERENTIATION_DN
20	-7.29	NULL	60	GSEA C2TURASHVILI_BREAST_LOBULAR_CARCINOMA_VS_LOBULAR

p-values

