

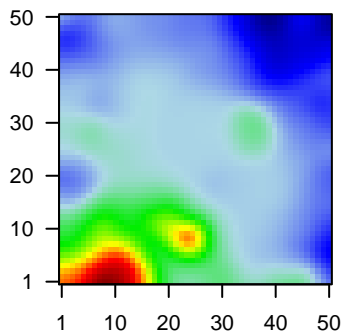
MPI-129

Global Summary

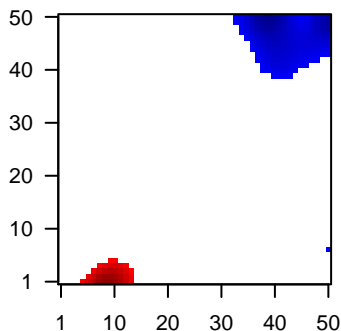
%DE = 0.09
 # genes with fdr < 0.2 = 1187 (840 + / 347 -)
 # genes with fdr < 0.1 = 872 (632 + / 240 -)
 # genes with fdr < 0.05 = 716 (534 + / 182 -)
 # genes with fdr < 0.01 = 391 (299 + / 92 -)
 # genes in genesets = 13152

<FC> = 0
 <t-score> = -0.47
 <p-value> = 0.2
 <fdr> = 0.91

Portrait



Regulated Metagenes



Global Genelist

Rank	ID	log(FC)	fdr p-value	Description
1	39318_at	-1.64	2e-16 3e-13	46 x 49 T cell leukemia/lymphoma 1A [Source:HGNC Symbol;Acc:HGNC:1080]
2	201852_x_at	1.39	2e-16 3e-13	8 x 0 collagen type III alpha 1 chain [Source:HGNC Symbol;Acc:HGNC:1080]
3	202018_s_at	3.09	2e-16 3e-13	11 x 4 lactotransferrin [Source:HGNC Symbol;Acc:HGNC:6720]
4	202310_s_at	1.45	2e-16 3e-13	9 x 0 collagen type I alpha 1 chain [Source:HGNC Symbol;Acc:HGNC:1080]
5	202403_s_at	1.27	2e-16 3e-13	9 x 0 collagen type I alpha 2 chain [Source:HGNC Symbol;Acc:HGNC:1080]
6	205982_x_at	2.68	2e-16 3e-13	23 x 8 surfactant protein C [Source:HGNC Symbol;Acc:HGNC:1080]
7	209810_at	3.13	2e-16 3e-13	0 x 22 surfactant protein B [Source:HGNC Symbol;Acc:HGNC:1080]
8	209995_s_at	-1.61	2e-16 3e-13	46 x 49 T cell leukemia/lymphoma 1A [Source:HGNC Symbol;Acc:HGNC:1080]
9	211735_x_at	3.02	2e-16 3e-13	23 x 8 surfactant protein C [Source:HGNC Symbol;Acc:HGNC:1080]
10	212316_at	-1.72	2e-16 3e-13	1 x 44 nucleoporin 210 [Source:HGNC Symbol;Acc:HGNC:30052]
11	213842_x_at	-1.56	2e-16 3e-13	42 x 41 NOP2/Sun RNA methyltransferase family member 5 pseudog
12	214387_x_at	2.67	2e-16 3e-13	23 x 8 surfactant protein C [Source:HGNC Symbol;Acc:HGNC:1080]
13	215076_s_at	1.26	2e-16 3e-13	8 x 0 collagen type III alpha 1 chain [Source:HGNC Symbol;Acc:HGNC:1080]
14	218835_at	3.68	2e-16 3e-13	23 x 8 surfactant protein A2 [Source:HGNC Symbol;Acc:HGNC:1071]
15	205476_at	2.61	1e-15 1e-11	17 x 12 C-C motif chemokine ligand 20 [Source:HGNC Symbol;Acc:HGNC:1080]
16	204475_at	2.59	2e-15 1e-11	7 x 0 matrix metalloproteinase 1 [Source:HGNC Symbol;Acc:HGNC:1080]
17	210448_s_at	-1.29	2e-15 1e-11	0 x 18 purinergic receptor P2X 5 [Source:HGNC Symbol;Acc:HGNC:1080]
18	201764_at	-1.75	3e-15 9e-11	36 x 49 transmembrane protein 106C [Source:HGNC Symbol;Acc:HGNC:1080]
19	207522_s_at	-1.33	3e-15 9e-11	40 x 39 ATPase sarcoplasmic/endoplasmic reticulum Ca2+ transporti
20	205484_at	-1.44	1e-14 9e-11	43 x 44 signaling threshold regulating transmembrane adaptor 1 [Sou

Global Geneset Analysis

Rank	GSZ	p-value	#all	Geneset
<i>Overexpressed</i>				
1	30.58	NULL	335	GSEA C2SCHUETZ_BREAST_CANCER_DUCTAL_INVASIVE_UP
2	28.64	NULL	214	Lymphoma ENZ_Stromal signature 1
3	26.83	NULL	1611	CC extracellular region
4	25.95	NULL	3001	Chromatin state peripheral blood_14_ReprPCWk
5	25.58	NULL	196	HM HALLMARK_EPITHELIAL_MESENCHYMAL_TRANSITION
6	25.21	NULL	1090	CC extracellular space
7	25.15	NULL	176	GSEA C2PICCALUGA_ANGIOIMMUNOBLASTIC_LYMPHOMA_UP
8	24.82	NULL	3734	Chromatin state peripheral blood_13_ReprPC
9	24.74	NULL	2747	Chromatin state peripheral blood_12_EnhBiv
10	24.47	NULL	747	GSEA C2NABA_MATRISOME
11	24.31	NULL	3168	Lymphoma OPP_Repressed
12	24.29	NULL	2405	Chromatin state peripheral blood_13_ReprPC
13	23.91	NULL	2765	Chromatin state regulatory cells peripheral blood_13_ReprPC
14	23.65	NULL	3918	Chromatin state peripheral blood_14_ReprPCWk
15	23.46	NULL	3724	Chromatin state peripheral blood_12_EnhBiv
16	23.12	NULL	447	Glioma ScoV_0.999_Sturm_E4_Mesenchymal_RTK I 'PDGFRA'_DN
17	22.97	NULL	397	GSEA C2REN_ALVEOLAR_RHABDOMYOSARCOMA_DN
18	22.27	NULL	2602	Chromatin state killer cells peripheral blood_12_EnhBiv
19	22.23	NULL	3089	Chromatin state regulatory cells peripheral blood_14_ReprPCWk
20	22.17	NULL	2984	Chromatin state killer cells peripheral blood_14_ReprPCWk
<i>Underexpressed</i>				
1	-25.51	NULL	1527	GSEA C2PUJANA_BRCA1_PCC_NETWORK
2	-25.31	NULL	7833	Chromatin state peripheral blood_1_TssA
3	-24.2	NULL	7420	Chromatin state peripheral blood_1_TssA
4	-23.92	NULL	7957	Chromatin state peripheral blood_2_TssAFink
5	-23.49	NULL	7930	Chromatin state regulatory cells peripheral blood_1_TssA
6	-23.06	NULL	8245	Chromatin state regulatory cells peripheral blood_2_TssAFink
7	-22.91	NULL	8406	Chromatin state peripheral blood_2_TssAFink
8	-22.03	NULL	4261	Lymphoma OPP_Txn_transition
9	-22	NULL	726	GSEA C2PUJANA_CHEK2_PCC_NETWORK
10	-22	NULL	5529	Lymphoma OPP_Txn_elongation
11	-21.94	NULL	7751	Chromatin state killer cells peripheral blood_1_TssA
12	-21.88	NULL	5716	Chromatin state peripheral blood_4_Tx
13	-21.27	NULL	8068	Chromatin state naive cells peripheral blood_1_TssA
14	-20.9	NULL	8322	Chromatin state naive cells peripheral blood_1_TssA
15	-20.73	NULL	4528	Chromatin state naive cells peripheral blood_4_Tx
16	-20.13	NULL	8431	Chromatin state naive cells peripheral blood_2_TssAFink
17	-20.11	NULL	8370	Chromatin state killer cells peripheral blood_2_TssAFink
18	-20.05	NULL	5753	Chromatin state peripheral blood_4_Tx
19	-19.83	NULL	5601	Chromatin state naive cells peripheral blood_4_Tx
20	-19.69	NULL	5527	Chromatin state regulatory cells peripheral blood_4_Tx

p-values

