

MPI-118

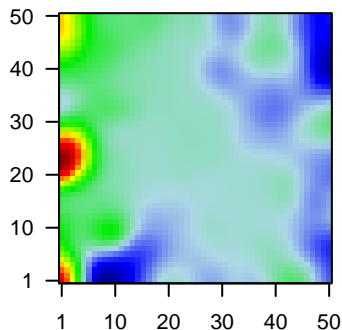
Global Summary

%DE = 0.05
 # genes with fdr < 0.2 = 590 (360 + / 230 -)
 # genes with fdr < 0.1 = 451 (287 + / 164 -)
 # genes with fdr < 0.05 = 385 (253 + / 132 -)
 # genes with fdr < 0.01 = 240 (165 + / 75 -)

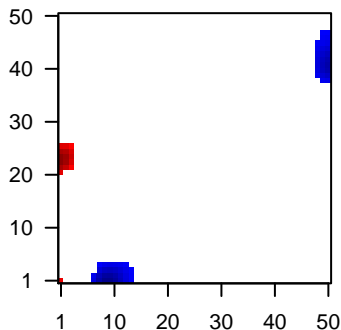
genes in genesets = 13152

<FC> = 0
 <t-score> = 0.14
 <p-value> = 0.26
 <fdr> = 0.95

Portrait



Regulated Metagenes



Global Genelist

Rank	ID	log(FC)	fdr p-value	Description Metagene
1	201560_at	-1.26	2e-16 4e-13	49 x 38 chloride intracellular channel 4 [Source:HGNC Symbol;Acc:HGNC:1759]
2	203440_at	2	2e-16 4e-13	2 x 25 cadherin 2 [Source:HGNC Symbol;Acc:HGNC:1759]
3	203797_at	2.29	2e-16 4e-13	5 x 20 visinin like 1 [Source:HGNC Symbol;Acc:HGNC:12722]
4	209398_at	1.61	2e-16 4e-13	0 x 20 histone cluster 1 H1 family member c [Source:HGNC Symbol;Acc:HGNC:1759]
5	210313_at	2.01	2e-16 4e-13	0 x 23 leukocyte immunoglobulin like receptor A4 [Source:HGNC Symbol;Acc:HGNC:1759]
6	213830_at	2.09	2e-16 4e-13	8 x 9
7	214290_s_at	1.35	2e-16 4e-13	0 x 21 histone cluster 2 H2A family member a3 [Source:HGNC Symbol;Acc:HGNC:1759]
8	214777_at	2.99	2e-16 4e-13	10 x 5 immunoglobulin kappa variable 4-1 [Source:HGNC Symbol;Acc:HGNC:1759]
9	216191_s_at	1.99	2e-16 4e-13	9 x 9 T cell receptor delta constant [Source:HGNC Symbol;Acc:HGNC:1759]
10	218280_x_at	1.41	2e-16 4e-13	1 x 21 histone cluster 2 H2A family member a3 [Source:HGNC Symbol;Acc:HGNC:1759]
11	220068_at	-1.26	2e-16 4e-13	49 x 39 V-set pre-B cell surrogate light chain 3 [Source:HGNC Symbol;Acc:HGNC:1759]
12	221651_x_at	0.82	2e-16 4e-13	0 x 3 immunoglobulin kappa constant [Source:HGNC Symbol;Acc:HGNC:1759]
13	39318_at	1.02	7e-16 1e-11	46 x 49 T cell leukemia/lymphoma 1A [Source:HGNC Symbol;Acc:HGNC:1759]
14	209806_at	0.99	7e-16 1e-11	0 x 20
15	217143_s_at	1.91	2e-15 1e-11	9 x 9 T cell receptor delta constant [Source:HGNC Symbol;Acc:HGNC:1759]
16	221671_x_at	0.76	2e-15 1e-11	0 x 3 immunoglobulin kappa constant [Source:HGNC Symbol;Acc:HGNC:1759]
17	203798_s_at	1.9	2e-15 1e-10	6 x 20 visinin like 1 [Source:HGNC Symbol;Acc:HGNC:12722]
18	213050_at	1.87	8e-15 4e-10	11 x 25 cordon-bleu WH2 repeat protein [Source:HGNC Symbol;Acc:HGNC:1759]
19	215949_x_at	1.64	3e-14 7e-10	11 x 5 immunoglobulin heavy variable 3-30 [Source:HGNC Symbol;Acc:HGNC:1759]
20	208579_x_at	1.07	6e-14 1e-09	0 x 20 histone cluster 1 H2B family member k [Source:HGNC Symbol;Acc:HGNC:1759]

Global Geneset Analysis

Rank	GSZ	p-value	#all	Geneset
<i>Overexpressed</i>				
1	14.5	NULL	589	Colon Cancer,TCGA-expr_kmeans_E_CIMP.H_UP_Cluster4_DN
2	14.29	NULL	102	Reference,CD4+Treg/B-cells
3	12.07	NULL	355	Reference,CD4+Treg/immune system
4	11.95	NULL	83	Melanoma,TCGA_melanoma_immune_high
5	11.17	NULL	184	Chr Chr 18
6	11.03	NULL	265	GSEA C2WALLACE_PROSTATE_CANCER_RACE_UP
7	10.69	NULL	18	Lymphoma,WRIGHT_ABC UP
8	9.53	NULL	68	Reference,CD8+Treg,2,1_Cytotoxic cells
9	9.5	NULL	33	Melanoma,Tirosh_T-cell specific genes-melanoma
10	9.31	NULL	317	Cancer SPANG_BCL6-index2
11	8.74	NULL	85	Lymphoma,Sha_DLBCL UP
12	8.67	NULL	42	GSEA C2REACTOME_RNA_POL_I_PROMOTER_OPENING
13	8.61	NULL	166	HM HALLMARK_INTERFERON_GAMMA_RESPONSE
14	8.48	NULL	36	GSEA C2REACTOME_PACKAGING_OF_TELOMERE_ENDS
15	8.44	NULL	48	Pneumonia,Burnham_cap_fp_vs_con_DN
16	8.36	NULL	78	GSEA C2FLECHNER_BIOPSY_KIDNEY_TRANSPLANT_REJECTED_VS_SURVIVAL
17	8.35	NULL	88	GSEA C2WIELAND_UP_BY_HBV_INFECTION
18	8.34	NULL	70	CC nucleosome
19	8.26	NULL	932	Chromatin,cell,peripheral blood_3_TxFlk
20	8.19	NULL	431	BP immune system process
<i>Underexpressed</i>				
1	-8.36	NULL	63	GSEA C2ANASTASSIOU_CANCER_MESENCHYMAL_TRANSITION_SIGNATURE
2	-7.04	NULL	9	Lymphoma,DAVE_BL UP
3	-6.96	NULL	78	Melanoma,Tirosh_CAF-cell specific genes
4	-6.17	NULL	437	Chr Chr 8
5	-6.14	NULL	196	HM HALLMARK_EPITHELIAL_MESENCHYMAL_TRANSITION
6	-5.7	NULL	197	GSEA C2NABA_CORE_MATRISOME
7	-5.57	NULL	253	CC proteinaceous extracellular matrix
8	-5.48	NULL	247	GSEA C2BOQUEST_STEM_CELL_UP
9	-5.31	NULL	2602	Chromatin,CD8+killer cells peripheral blood_12_EnhBiv
10	-5.25	NULL	3734	Chromatin,cell,peripheral blood_13_ReprPC
11	-5.05	NULL	58	GSEA C2TURASHVILI_BREAST_LOBULAR_CARCINOMA_VS_DUCTAL_CARCINOMA
12	-5.04	NULL	18	GSEA C2FARMER_BREAST_CANCER_CLUSTER_5
13	-5.03	NULL	512	GSEA C2WEST_ADRENOCORTICAL_TUMOR_DN
14	-4.96	NULL	60	GSEA C2WILCOX_RESPONSE_TO_PROGESTERONE_DN
15	-4.85	NULL	4	Lymphoma,WRIGHT_custom GCB-DLBCL UP
16	-4.84	NULL	17	GSEA C2THUM_MIR21_TARGETS_HEART_DISEASE_UP
17	-4.84	NULL	2194	Chromatin,cell,peripheral blood_12_EnhBiv
18	-4.83	NULL	60	GSEA C2TURASHVILI_BREAST_LOBULAR_CARCINOMA_VS_LOBULAR_CARCINOMA
19	-4.72	NULL	2134	Chromatin,cell,peripheral blood_12_EnhBiv
20	-4.72	NULL	136	GSEA C2NABA_ECM_GLYCOPROTEINS

p-values

