

MPI-115

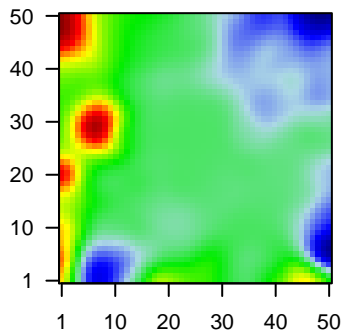
Global Summary

%DE = 0.05
 # genes with fdr < 0.2 = 493 (297 + / 196 -)
 # genes with fdr < 0.1 = 313 (198 + / 115 -)
 # genes with fdr < 0.05 = 253 (161 + / 92 -)
 # genes with fdr < 0.01 = 145 (100 + / 45 -)

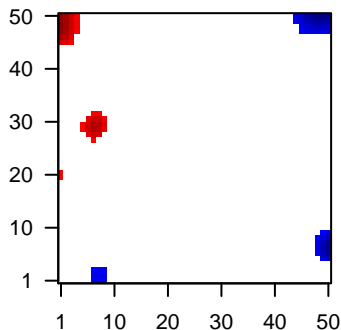
 # genes in genesets = 13152

<FC> = 0
 <t-score> = 0.12
 <p-value> = 0.27
 <fdr> = 0.95

Portrait



Regulated Metagenes



Global Genelist

Rank	ID	log(FC)	fdr	p-value	Description
1	200073_s_at	-1.09	2e-16	3e-13	33 x 43 heterogeneous nuclear ribonucleoprotein D [Source:HGNC S
2	1255_g_at	2.16	2e-16	3e-13	7 x 33 guanylate cyclase activator 1A [Source:HGNC Symbol;Acc:H
3	201909_at	-1.33	2e-16	3e-13	43 x 49 ribosomal protein S4, Y-linked 1 [Source:HGNC Symbol;Acc:
4	203447_at	-1.62	2e-16	3e-13	32 x 49 proteasome 26S subunit, non-ATPase 5 [Source:HGNC Sym
5	206062_at	2.26	2e-16	3e-13	7 x 33 guanylate cyclase activator 1A [Source:HGNC Symbol;Acc:H
6	209330_s_at	-1.18	2e-16	3e-13	34 x 45 heterogeneous nuclear ribonucleoprotein D [Source:HGNC S
7	209374_s_at	1.26	2e-16	3e-13	0 x 22 immunoglobulin heavy constant mu [Source:HGNC Symbol;A
8	209728_at	2.13	2e-16	3e-13	0 x 10 major histocompatibility complex, class II, DR beta 4 [Source:
9	209810_at	2.1	2e-16	3e-13	0 x 22 surfactant protein B [Source:HGNC Symbol;Acc:HGNC:1080
10	214669_x_at	1.2	2e-16	3e-13	0 x 3
11	214777_at	3	2e-16	3e-13	10 x 5 immunoglobulin kappa variable 4-1 [Source:HGNC Symbol;A
12	221286_s_at	1.17	2e-16	3e-13	42 x 47 marginal zone B and B1 cell specific protein [Source:HGNC S
13	221651_x_at	1.07	2e-16	3e-13	0 x 3 immunoglobulin kappa constant [Source:HGNC Symbol;Acc:I
14	221671_x_at	1	2e-16	3e-13	0 x 3 immunoglobulin kappa constant [Source:HGNC Symbol;Acc:I
15	207861_at	2.04	4e-16	4e-12	0 x 20 C-C motif chemokine ligand 22 [Source:HGNC Symbol;Acc;C
16	200598_s_at	0.98	7e-16	4e-12	5 x 28 heat shock protein 90 beta family member 1 [Source:HGNC S
17	201525_at	1.93	9e-16	7e-11	29 x 0 apolipoprotein D [Source:HGNC Symbol;Acc:HGNC:612]
18	219255_x_at	2.02	9e-16	7e-11	0 x 19 interleukin 17 receptor B [Source:HGNC Symbol;Acc:HGNC:
19	214836_x_at	1	4e-15	1e-10	0 x 3
20	217760_at	-1.29	2e-14	1e-10	0 x 24 tripartite motif containing 44 [Source:HGNC Symbol;Acc:HG

Global Geneset Analysis

Rank	GSZ	p-value	#all	Geneset
<i>Overexpressed</i>				
1	16.21	NULL	77	Lymphoma TARTe_Plasma cell signature
2	15.04	NULL	75	GSEA C2TARTE_PLASMA_CELL_VS_B_LYMPHOCYTE_UP
3	11.53	NULL	689	Chr Chr 3
4	10.85	NULL	317	Cancer SPANG_BCL6-index2
5	10.57	NULL	216	GSEA C2PASQUALUCCI_LYMPHOMA_BY_GC_STAGE_UP
6	10.55	NULL	41	GSEA C2MORI_PLASMA_CELL_UP
7	10.17	NULL	3767	Chromatin accessibility peripheral blood_6_EnhG
8	10.04	NULL	64	GSEA C2SHAFFER_IRF4_TARGETS_IN_ACTIVATED_DENDRITIC_CELL
9	10.02	NULL	1035	CC endoplasmic reticulum
10	9.88	NULL	3524	Chromatin accessibility cells peripheral blood_6_EnhG
11	9.74	NULL	3682	Chromatin accessibility killer cells peripheral blood_6_EnhG
12	9.67	NULL	198	GSEA C2TIEN_INTESTINE_PROBIOTICS_24HR_DN
13	9.5	NULL	85	Lymphoma TARTe_DLBCL UP
14	9.47	NULL	5339	CC membrane
15	9.39	NULL	4208	Chromatin accessibility peripheral blood_6_EnhG
16	8.99	NULL	3270	CC integral component of membrane
17	8.89	NULL	273	GSEA C2SHEDDEN_LUNG_CANCER_GOOD_SURVIVAL_A12
18	8.89	NULL	589	Colon Cancer TCGA-expr_kmeans_E_CIMP_H_UP_Cluster4_DN
19	8.81	NULL	64	GSEA C2SHAFFER_IRF4_TARGETS_IN_PLASMA_CELL_VS_MATURE_B
20	8.65	NULL	18	Lymphoma TARTe_RIGHT_ABC UP
<i>Underexpressed</i>				
1	-9.69	NULL	319	Melanoma TARTe_serber_wt/wt_melanoma-cells-SpotA
2	-9.13	NULL	1052	GSEA C2DODD_NASOPHARYNGEAL_CARCINOMA_DN
3	-8.1	NULL	431	GSEA C2GOBERT_OLIGODENDROCYTE_DIFFERENTIATION_UP
4	-8.01	NULL	400	GSEA C2PUJANA_BRCA2_PCC_NETWORK
5	-7.52	NULL	9	GSEA C2RUNNE_GENDER_EFFECT_UP
6	-7.46	NULL	214	Lymphoma TARTe_Stromal signature 1
7	-7.27	NULL	280	GSEA C2MANALO_HYPOXIA_DN
8	-7.25	NULL	966	GSEA C2KINSEY_TARGETS_OF_EWSR1_FLII_FUSION_UP
9	-7.05	NULL	254	GSEA C2DUTERTRE ESTRADIOL_RESPONSE_24HR_UP
10	-7.02	NULL	187	HM HALLMARK_E2F_TARGETS
11	-6.89	NULL	115	Glioma WILLSCHER_GBM_Verhaak-GL_up (C)
12	-6.72	NULL	137	GSEA C2ROSTY_CERVICAL_CANCER_PROLIFERATION_CLUSTER
13	-6.42	NULL	244	GSEA C2KOBAYASHI_EGFR_SIGNALING_24HR_DN
14	-6.39	NULL	42	GSEA C2HUMMEL_BURKITT'S_LYMPHOMA_UP
15	-6.36	NULL	25	Lymphoma TARTe_OSOWSKI_red UP
16	-6.35	NULL	14	Cancer SOTIRIOU_BREAST_CANCER_GRADE_1_VS_3_UP
17	-6.23	NULL	102	GSEA C2WHITEFORD_PEDIATRIC_CANCER_MARKERS
18	-6.13	NULL	466	GSEA C2BERENJENO_TRANSFORMED_BY_RHOA_UP
19	-6.12	NULL	79	Melanoma TARTe_ireosh_core cycling genes in low- and high-proliferation melanoma
20	-6.12	NULL	321	GSEA C2BLUM_RESPONSE_TO_SALIRASIB_DN

p-values

