

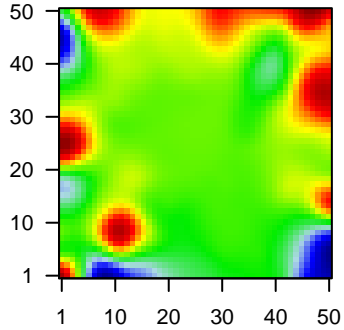
MPI-094

Global Summary

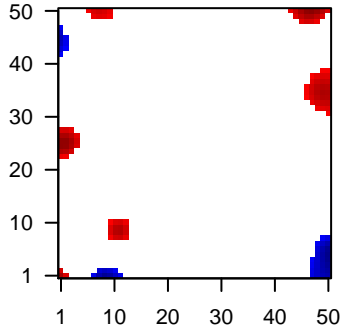
%DE = 0.05
 # genes with fdr < 0.2 = 583 (339 + / 244 -)
 # genes with fdr < 0.1 = 453 (277 + / 176 -)
 # genes with fdr < 0.05 = 362 (229 + / 133 -)
 # genes with fdr < 0.01 = 234 (151 + / 83 -)
 # genes in genesets = 13152

<FC> = 0
 <t-score> = 0.18
 <p-value> = 0.26
 <fdr> = 0.95

Portrait



Regulated Metagenes



Global Genelist

Rank	ID	log(FC)	fdr	Description
		p-value		Metagene
1	39318_at	1.13	2e-16	4e-13 T cell leukemia/lymphoma 1A [Source:HGNC Symbol;Acc:HGNC:1759]
2	201909_at	-1.29	2e-16	4e-13 43 x 49 ribosomal protein S4, Y-linked 1 [Source:HGNC Symbol;Acc:HGNC:1759]
3	203440_at	2.11	2e-16	4e-13 2 x 25 cadherin 2 [Source:HGNC Symbol;Acc:HGNC:1759]
4	206018_at	2.03	2e-16	4e-13 6 x 32 forkhead box G1 [Source:HGNC Symbol;Acc:HGNC:3811]
5	209995_s_at	1.17	2e-16	4e-13 46 x 49 T cell leukemia/lymphoma 1A [Source:HGNC Symbol;Acc:HGNC:1759]
6	211639_x_at	2.04	2e-16	4e-13 20 x 13 immunoglobulin heavy variable 4-34 [Source:HGNC Symbol;Acc:HGNC:1759]
7	213830_at	2.23	2e-16	4e-13 8 x 9
8	215121_x_at	0.77	2e-16	4e-13 41 x 42 immunoglobulin lambda constant 2 [Source:HGNC Symbol;Acc:HGNC:1759]
9	215379_x_at	1.11	2e-16	4e-13 41 x 42 immunoglobulin lambda constant 2 [Source:HGNC Symbol;Acc:HGNC:1759]
10	216191_s_at	2.11	2e-16	4e-13 9 x 9 T cell receptor delta constant [Source:HGNC Symbol;Acc:HGNC:1759]
11	216853_x_at	3.27	2e-16	4e-13 11 x 5 immunoglobulin lambda variable 3-19 [Source:HGNC Symbol;Acc:HGNC:1759]
12	217143_s_at	1.99	2e-16	4e-13 9 x 9 T cell receptor delta constant [Source:HGNC Symbol;Acc:HGNC:1759]
13	212574_x_at	-1.57	2e-15	3e-11 0 x 44 transmembrane protein 259 [Source:HGNC Symbol;Acc:HGNC:1759]
14	221286_s_at	-1	2e-15	3e-11 42 x 47 marginal zone B and B1 cell specific protein [Source:HGNC Symbol;Acc:HGNC:1759]
15	216365_x_at	1.82	3e-15	3e-11 11 x 5
16	209840_s_at	1.81	4e-15	3e-11 41 x 15 leucine rich repeat neuronal 3 [Source:HGNC Symbol;Acc:HGNC:1759]
17	205967_at	0.83	5e-15	2e-10 37 x 49 histone cluster 1 H4 family member c [Source:HGNC Symbol;Acc:HGNC:1759]
18	201367_s_at	-1.39	1e-14	8e-10 0 x 43 ZFP36 ring finger protein like 2 [Source:HGNC Symbol;Acc:HGNC:1759]
19	203441_s_at	1.73	5e-14	8e-10 30 x 17 cadherin 2 [Source:HGNC Symbol;Acc:HGNC:1759]
20	215946_x_at	0.85	9e-14	9e-10 41 x 42 immunoglobulin lambda like polypeptide 3, pseudogene [Source:HGNC Symbol;Acc:HGNC:1759]

Global Geneset Analysis

Rank	GSZ	p-value	#all	Geneset
<i>Overexpressed</i>				
1	13.65	NULL	102	Reference:GSE10278/B-cells
2	12.84	NULL	83	MelanomaTCGA_melanoma_immune_high
3	11.06	NULL	33	MelanomaTirosh_T-cell specific genes-melanoma
4	10.64	NULL	68	Reference:GSE10278/2_1_Cytotoxic cells
5	10.34	NULL	15	LymphomaGare_Polarized immune response
6	9.75	NULL	56	PneumoniaBurnham_sep_vs_con_DN
7	9.54	NULL	161	BP adaptive immune response
8	8.39	NULL	2325	ChromatinStates_ZNF_Rpts
9	8.37	NULL	778	ChromatinStates_naive cells peripheral blood_8_ZNF_Rpts
10	8.36	NULL	48	PneumoniaBurnham_cap_fp_vs_con_DN
11	8.3	NULL	44	MF antigen binding
12	8.1	NULL	1004	ChromatinStates regulatory cells peripheral blood_8_ZNF_Rpts
13	8.06	NULL	1025	ChromatinStates naive cells peripheral blood_8_ZNF_Rpts
14	7.89	NULL	265	GSEA C2WALLACE_PROSTATE_CANCER_RACE_UP
15	7.73	NULL	52	BP complement activation, classical pathway
16	7.64	NULL	184	Chr Chr 18
17	7.57	NULL	429	GSEA C2SMID_BREAST_CANCER_NORMAL_LIKE_UP
18	7.44	NULL	10	GSEA C2CHAN_INTERFERON_PRODUCING_DENDRITIC_CELL
19	7.43	NULL	1353	ChromatinStates naive cells peripheral blood_9_Het
20	7.37	NULL	589	ColonCancerTCGA-expr_kmeans_E_CIMP_H_UP_Cluster4_DN
<i>Underexpressed</i>				
1	-14.59	NULL	2704	ChromatinStates_Fibroblasts
2	-13.89	NULL	3803	ChromatinStates_Fibroblasts
3	-11.94	NULL	2380	ChromatinStates1_Colon
4	-10.16	NULL	2203	ChromatinStatesColon
5	-9.86	NULL	1600	ChromatinStates_Melanocytes
6	-9.31	NULL	63	GSEA C2ANASTASSIOU_CANCER_MESENCHYMAL_TRANSITION_SIGN
7	-9.28	NULL	4595	ChromatinStates_Melanocytes
8	-8.85	NULL	9	GSEA C2RUNNE_GENDER_EFFECT_UP
9	-8.46	NULL	196	HM HALLMARK_EPITHELIAL_MESENCHYMAL_TRANSITION
10	-8.38	NULL	183	BP extracellular matrix organization
11	-8.29	NULL	2563	ChromatinStatesFrontal_Lobe_ZNF
12	-8.17	NULL	212	CC extracellular matrix
13	-8.03	NULL	2507	ChromatinStatesFrontal_Lobe_ReprPC
14	-7.83	NULL	4219	ChromatinStates1_Colon
15	-7.79	NULL	4138	ChromatinStates_Skeletal_Muscle
16	-7.58	NULL	21	GSEA C2PYEON_CANCER_HEAD_AND_NECK_VS_CERVICAL_DN
17	-7.19	NULL	7943	ChromatinStatesColon
18	-7.16	NULL	518	GSEA C2MILL_PSEUDOPODIA_HAPTOTAXIS_DN
19	-7.11	NULL	4672	ChromatinStatesColon
20	-7.07	NULL	384	GSEA C2MILL_PSEUDOPODIA_CHEMOTAXIS_DN

p-values

