

MPI-093

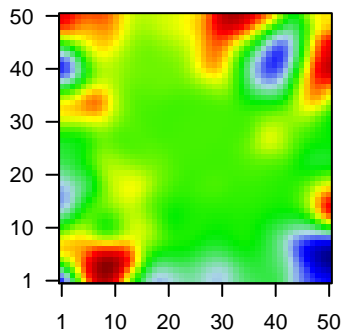
Global Summary

%DE = 0.06
 # genes with fdr < 0.2 = 809 (417 + / 392 -)
 # genes with fdr < 0.1 = 531 (278 + / 253 -)
 # genes with fdr < 0.05 = 396 (201 + / 195 -)
 # genes with fdr < 0.01 = 232 (117 + / 115 -)

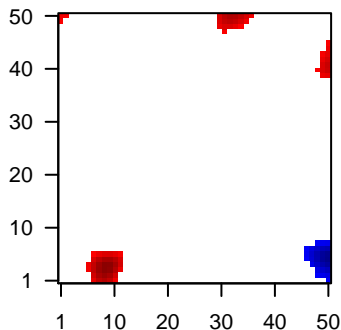
genes in genesets = 13152

<FC> = 0
 <t-score> = 0.05
 <p-value> = 0.24
 <fdr> = 0.94

Portrait



Regulated Metagenes



Global Genelist

Rank	ID	log(FC)	fdr	p-value	Description
1	201820_at	2.25	2e-16	4e-13	22 x 12 keratin 5 [Source:HGNC Symbol;Acc:HGNC:6442]
2	203645_s_at	-1.58	2e-16	4e-13	8 x 10 CD163 molecule [Source:HGNC Symbol;Acc:HGNC:1631]
3	206018_at	2.85	2e-16	4e-13	6 x 32 forkhead box G1 [Source:HGNC Symbol;Acc:HGNC:3811]
4	206461_x_at	-1.32	2e-16	4e-13	0 x 1 metallothionein 1H [Source:HGNC Symbol;Acc:HGNC:7400]
5	206918_s_at	-1.28	2e-16	4e-13	17 x 49 copine 1 [Source:HGNC Symbol;Acc:HGNC:2314]
6	209374_s_at	-2.12	2e-16	4e-13	0 x 22 immunoglobulin heavy constant mu [Source:HGNC Symbol;A
7	212827_at	-2.22	2e-16	4e-13	41 x 44 immunoglobulin heavy constant mu [Source:HGNC Symbol;A
8	214870_x_at	-1.64	2e-16	4e-13	49 x 5 nuclear pore complex-interacting protein family member A5 i
9	215049_x_at	-1.5	2e-16	4e-13	8 x 10 CD163 molecule [Source:HGNC Symbol;Acc:HGNC:1631]
10	216207_x_at	1.94	2e-16	4e-13	10 x 5 immunoglobulin kappa variable 1-13 (gene/pseudogene) [So
11	217378_x_at	2.27	2e-16	4e-13	10 x 5 immunoglobulin kappa variable 1/OR2-108 (non-functional)]
12	211656_x_at	-0.99	7e-16	6e-11	2 x 9 major histocompatibility complex, class II, DQ beta 1 [Source:
13	213757_at	0.95	7e-16	6e-11	30 x 49 G protein pathway suppressor 2 [Source:HGNC Symbol;Acc:i
14	220105_at	2.02	3e-15	1e-09	8 x 19 radial spoke head 14 homolog [Source:HGNC Symbol;Acc:Hi
15	210425_x_at	-1.46	6e-14	2e-09	49 x 4 golgin A8 family member A [Source:HGNC Symbol;Acc:HGNC
16	212101_at	-1.81	3e-13	2e-09	0 x 39 karyopherin subunit alpha 6 [Source:HGNC Symbol;Acc:HGNC
17	214243_s_at	1.88	3e-13	3e-09	27 x 49 serine hydrolase-like (pseudogene) [Source:HGNC Symbol;A
18	203761_at	-1.07	4e-13	1e-08	0 x 20 Src like adaptor [Source:HGNC Symbol;Acc:HGNC:10902]
19	220994_s_at	1.81	2e-12	1e-08	0 x 32 syntaxin binding protein 6 [Source:HGNC Symbol;Acc:HGNC
20	217276_x_at	1.8	2e-12	1e-08	46 x 48 serine hydrolase-like (pseudogene) [Source:HGNC Symbol;A

Global Geneset Analysis

Rank	GSZ	p-value	#all	Geneset
<i>Overexpressed</i>				
1	12.89	NULL	214	Lymphoma_TENZ_Stromal signature 1
2	10.37	NULL	219	Reference_Sig166 B-cells
3	8.1	NULL	176	GSEA_C2ICCALUGA_ANGIOIMMUNOBLASTIC_LYMPHOMA_UP
4	7.37	NULL	192	Lymphoma_TNF-alfa_Dark zone signature
5	7.29	NULL	669	GSEA_C2JOHNSTONE_PARVB_TARGETS_3_DN
6	6.44	NULL	1001	Colon_Cancer_pointe_mucosa-position_kmeans_H_cecum colon_ascending o
7	6.18	NULL	78	Melanoma_Tiresh_CAF-cell specific genes
8	6.04	NULL	500	GSEA_C2ONKEN_UVEAL_MELANOMA_DN
9	5.88	NULL	247	GSEA_C2BOQUEST_STEM_CELL_UP
10	5.86	NULL	376	GSEA_C2CHARAFE_BREAST_CANCER_LUMINAL_VS_MESENCHYMAL
11	5.7	NULL	61	GSEA_C2BASSO_CD40_SIGNALING_DN
12	5.68	NULL	756	Chr Chr 11
13	5.66	NULL	758	GSEA_C2NUYTEN_EZH2_TARGETS_DN
14	5.58	NULL	2300	Chromatin_Signature cells peripheral blood_13_ReprPC
15	5.56	NULL	137	GSEA_C2ROSTY_CERVICAL_CANCER_PROLIFERATION_CLUSTER
16	5.52	NULL	2154	Chromatin_Signature cells peripheral blood_11_BivFink
17	5.5	NULL	196	HM HALLMARK_EPITHELIAL_MESENCHYMAL_TRANSITION
18	5.48	NULL	163	GSEA_C2ONCANNON_APOPTOSIS_BY_EPOXOMICIN_DN
19	5.45	NULL	442	GSEA_C2KIM_WT1_TARGETS_DN
20	5.43	NULL	184	GSEA_C2WELCSH_BRCA1_TARGETS_UP
<i>Underexpressed</i>				
1	-10.34	NULL	102	Reference_Sig166 B-cells
2	-9.75	NULL	11	MF peptidoglycan binding
3	-9.31	NULL	239	GSEA_C2GINESTIER_BREAST_CANCER_ZNF217_AMPLIFIED_DN
4	-9.19	NULL	16	MF immunoglobulin receptor binding
5	-8.64	NULL	25	BP antibacterial humoral response
6	-7.47	NULL	19	BP positive regulation of B cell activation
7	-7.42	NULL	4208	Chromatin_Signature cells peripheral blood_6_EnhG
8	-7.39	NULL	9	GSEA_C2RUNNE_GENDER_EFFECT_UP
9	-7.33	NULL	73	GSEA_C2HECKER_IFNB1_TARGETS
10	-7.25	NULL	218	Reference_Sig166 post GC B-cells
11	-7.2	NULL	72	Reference_Sig166 3_1 Interferon-inducible
12	-7.07	NULL	21	BP phagocytosis, recognition
13	-7.04	NULL	37	Pneumonia_veney_viral_up
14	-6.89	NULL	2704	Chromatin_Signature Fibroblasts
15	-6.87	NULL	589	Colon_Cancer_benck TCGA-expr_kmeans_E_CIMP.H_UP_Cluster4_DN
16	-6.69	NULL	44	MF antigen binding
17	-6.52	NULL	3682	Chromatin_Signature killer cells peripheral blood_6_EnhG
18	-6.52	NULL	3803	Chromatin_Signature Fibroblasts
19	-6.49	NULL	26	GSEA_C2MOSELER_IFNA_RESPONSE
20	-6.47	NULL	21	GSEA_C2JROSEVIC_RESPONSE_TO_IMIQUIMOD

p-values

