

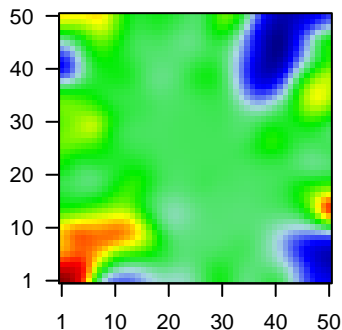
# MPI-092

## Global Summary

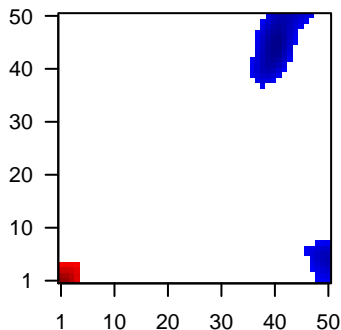
%DE = 0.05  
 # genes with fdr < 0.2 = 663 ( 359 + / 304 - )  
 # genes with fdr < 0.1 = 439 ( 244 + / 195 - )  
 # genes with fdr < 0.05 = 302 ( 166 + / 136 - )  
 # genes with fdr < 0.01 = 184 ( 97 + / 87 - )  
 # genes in genesets = 13152

<FC> = 0  
 <t-score> = -0.01  
 <p-value> = 0.26  
 <fdr> = 0.95

Portrait



Regulated Metagenes



## Global Genelist

Rank	ID	log(FC)	fdr	p-value	Description
1	39318_at	-1.85	2e-16	8e-13	46 x 49 T cell leukemia/lymphoma 1A [Source:HGNC Symbol;Acc:HGNC:10000]
2	209374_s_at	-2.16	2e-16	8e-13	0 x 22 immunoglobulin heavy constant mu [Source:HGNC Symbol;Acc:HGNC:10000]
3	209995_s_at	-2.43	2e-16	8e-13	46 x 49 T cell leukemia/lymphoma 1A [Source:HGNC Symbol;Acc:HGNC:10000]
4	212827_at	-2.11	2e-16	8e-13	41 x 44 immunoglobulin heavy constant mu [Source:HGNC Symbol;Acc:HGNC:10000]
5	213831_at	-1.6	2e-16	8e-13	49 x 16 major histocompatibility complex, class II, DQ alpha 1 [Source:HGNC Symbol;Acc:HGNC:10000]
6	214870_x_at	-1.69	2e-16	8e-13	49 x 5 nuclear pore complex-interacting protein family member A5 isoform 1 [Source:HGNC Symbol;Acc:HGNC:10000]
7	217022_s_at	-1.46	2e-15	4e-11	0 x 2 immunoglobulin heavy constant alpha 2 (A2m marker) [Source:HGNC Symbol;Acc:HGNC:10000]
8	212520_s_at	-1.53	4e-15	3e-10	47 x 49 SWI/SNF related, matrix associated, actin dependent regulator of transcription 1 [Source:HGNC Symbol;Acc:HGNC:10000]
9	221651_x_at	0.84	2e-14	3e-10	0 x 3 immunoglobulin kappa constant [Source:HGNC Symbol;Acc:HGNC:10000]
10	215379_x_at	-0.95	3e-14	2e-09	41 x 42 immunoglobulin lambda constant 2 [Source:HGNC Symbol;Acc:HGNC:10000]
11	209728_at	2.05	1e-13	2e-09	0 x 10 major histocompatibility complex, class II, DR beta 4 [Source:HGNC Symbol;Acc:HGNC:10000]
12	204213_at	2.02	3e-13	2e-09	17 x 14 polymeric immunoglobulin receptor [Source:HGNC Symbol;Acc:HGNC:10000]
13	208719_s_at	2	4e-13	2e-09	49 x 44 DEAD-box helicase 17 [Source:HGNC Symbol;Acc:HGNC:10000]
14	211656_x_at	0.96	4e-13	3e-09	2 x 9 major histocompatibility complex, class II, DQ beta 1 [Source:HGNC Symbol;Acc:HGNC:10000]
15	220377_at	1.99	6e-13	3e-09	5 x 28 family with sequence similarity 30 member A [Source:HGNC Symbol;Acc:HGNC:10000]
16	209823_x_at	0.99	7e-13	3e-09	2 x 8 major histocompatibility complex, class II, DQ beta 1 [Source:HGNC Symbol;Acc:HGNC:10000]
17	203509_at	-1.06	9e-13	3e-09	49 x 40 sortilin related receptor 1 [Source:HGNC Symbol;Acc:HGNC:10000]
18	212064_x_at	-1.05	1e-12	1e-07	0 x 40 MYC associated zinc finger protein [Source:HGNC Symbol;Acc:HGNC:10000]
19	215714_s_at	-1.33	7e-12	1e-07	46 x 49 SWI/SNF related, matrix associated, actin dependent regulator of transcription 1 [Source:HGNC Symbol;Acc:HGNC:10000]
20	203550_s_at	-1.57	2e-11	1e-07	40 x 46 family with sequence similarity 189 member B [Source:HGNC Symbol;Acc:HGNC:10000]

## Global Geneset Analysis

Rank	GSZ	p-value	#all	Geneset
<i>Overexpressed</i>				
1	17.5	NULL	589	Colon Cancer Lembecke_TCGA-expr_kmeans_E_CIMP_H_UP_Cluster4_DN
2	13.6	NULL	447	Glioma ScoV_0.999_Sturm_E4_Mesenchymal_RTK1_PDGFR_A_DN
3	13.19	NULL	265	GSEA C2WALLACE_PROSTATE_CANCER_RACE_UP
4	12.7	NULL	355	Reference GSE116036_Immune system
5	11.86	NULL	317	Cancer SPANG_BCL6-index2
6	11.16	NULL	102	Reference GSE116036_B-cells
7	10.86	NULL	429	GSEA C2SMID_BREAST_CANCER_NORMAL_LIKE_UP
8	10.54	NULL	88	GSEA C2WIELAND_UP_BY_HBV_INFECTION
9	10.32	NULL	336	BP immune response
10	9.96	NULL	40	GSEA C2FARMER_BREAST_CANCER_CLUSTER_1
11	9.93	NULL	223	GSEA C2MCLACHLAN_DENTAL_CARIES_UP
12	9.87	NULL	386	GSEA C2RUTELLA_RESPONSE_TO_HGF_VS_CSF2RB_AND_IL4_UP
13	9.72	NULL	194	GSEA C2JAATINEN_HEMATOPOIETIC_STEM_CELL_DN
14	9.62	NULL	166	HM HALLMARK_INTERFERON_GAMMA_RESPONSE
15	9.6	NULL	354	GSEA C2FULCHER_INFLAMMATORY_RESPONSE_LLECTIN_VS_LPS_DN
16	9.54	NULL	299	GSEA C2DEURIG_T_CELL_PROLYMPHOCTIC_LEUKEMIA_DN
17	9.34	NULL	83	Melanoma TCGA_melanoma_immune_high
18	8.88	NULL	404	GSEA C2RUTELLA_RESPONSE_TO_HGF_UP
19	8.69	NULL	368	GSEA C2ZHENG_BOUND_BY_FOXP3
20	8.68	NULL	186	Cancer SPANG_LPS-index2
<i>Underexpressed</i>				
1	-13.02	NULL	2704	Chromatin States Fibroblasts
2	-11.71	NULL	280	GSEA C2MANALO_HYPOXIA_DN
3	-11.64	NULL	3803	Chromatin States Fibroblasts
4	-11.57	NULL	575	GSEA C2CAIRO_HEPATOBLASTOMA_CLASSES_UP
5	-10.78	NULL	5456	Chromatin States Neuronal_Progenitor
6	-10.61	NULL	244	GSEA C2KOBAYASHI_EGFR_SIGNALING_24HR_DN
7	-10.5	NULL	254	GSEA C2DUTERTRE ESTRADIOL_RESPONSE_24HR_UP
8	-10.37	NULL	16	MF immunoglobulin receptor binding
9	-10.14	NULL	1161	MF RNA binding
10	-10.09	NULL	726	GSEA C2PUJANA_CHEK2_PCC_NETWORK
11	-9.94	NULL	19	BP positive regulation of B cell activation
12	-9.93	NULL	728	GSEA C2KRIGE_RESPONSE_TO_TOSEDOSTAT_24HR_DN
13	-9.92	NULL	239	GSEA C2GINESTIER_BREAST_CANCER_ZNF217_AMPLIFIED_DN
14	-9.9	NULL	409	Cancer Lembecke_Normal vs Adenoma
15	-9.46	NULL	314	GSEA C2PENG_GLUTAMINE_DEPRIVATION_DN
16	-9.34	NULL	998	Chromatin States Neuronal_Progenitor
17	-9.29	NULL	703	GSEA C2LEE_BMP2_TARGETS_DN
18	-9.14	NULL	190	HM HALLMARK_MYC_TARGETS_V1
19	-9.08	NULL	2204	Chromatin States ESC_Mesoderm
20	-8.86	NULL	1527	GSEA C2PUJANA_BRCA1_PCC_NETWORK

p-values

