

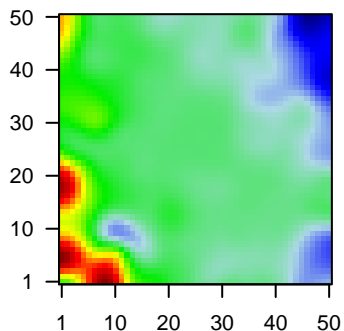
MPI-083

Global Summary

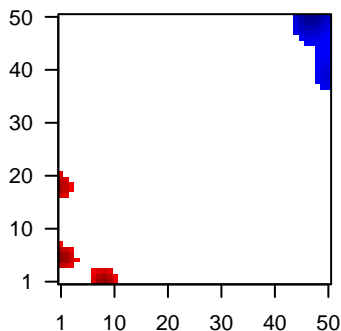
%DE = 0.05
 # genes with fdr < 0.2 = 588 (394 + / 194 -)
 # genes with fdr < 0.1 = 469 (325 + / 144 -)
 # genes with fdr < 0.05 = 295 (211 + / 84 -)
 # genes with fdr < 0.01 = 199 (141 + / 58 -)
 # genes in genesets = 13152

<FC> = 0
 <t-score> = 0.13
 <p-value> = 0.26
 <fdr> = 0.95

Portrait



Regulated Metagenes



Global Genelist

Rank	ID	log(FC)	fdr	p-value	Description
1	203284_s_at	-1.72	2e-16	7e-13	49 x 38 heparan sulfate 2-O-sulfotransferase 1 [Source:HGNC Symt
2	203290_at	1.94	2e-16	7e-13	7 x 0 major histocompatibility complex, class II, DQ alpha 2 [Source
3	204259_at	2.59	2e-16	7e-13	6 x 3 matrix metalloproteinase 7 [Source:HGNC Symbol;Acc:HGNC
4	209823_x_at	0.99	2e-16	7e-13	2 x 8 major histocompatibility complex, class II, DQ beta 1 [Source:
5	210551_s_at	2.15	2e-16	7e-13	1 x 17 acetylserotonin O-methyltransferase [Source:HGNC Symbol;
6	213831_at	-1.39	2e-16	7e-13	49 x 16 major histocompatibility complex, class II, DQ alpha 1 [Source
7	218186_at	1.99	2e-16	7e-13	0 x 17 RAB25, member RAS oncogene family [Source:HGNC Symb
8	221671_x_at	0.75	8e-15	9e-10	0 x 3 immunoglobulin kappa constant [Source:HGNC Symbol;Acc:I
9	209739_s_at	1.82	5e-14	1e-09	49 x 19 patatin like phospholipase domain containing 4 [Source:HGNC
10	221651_x_at	0.71	1e-13	7e-09	0 x 3 immunoglobulin kappa constant [Source:HGNC Symbol;Acc:I
11	219955_at	1.74	7e-13	7e-09	17 x 14 LINE1 type transposase domain containing 1 [Source:HGNC
12	201820_at	1.73	8e-13	1e-08	22 x 12 keratin 5 [Source:HGNC Symbol;Acc:HGNC:6442]
13	221728_x_at	1.71	1e-12	3e-08	0 x 15 X inactive specific transcript (non-protein coding) [Source:HC
14	214218_s_at	1.68	4e-12	3e-08	0 x 14 X inactive specific transcript (non-protein coding) [Source:HC
15	215176_x_at	1.18	4e-12	3e-08	10 x 5 immunoglobulin kappa variable 1-39 (gene/pseudogene) [So
16	211656_x_at	0.8	5e-12	1e-07	2 x 9 major histocompatibility complex, class II, DQ beta 1 [Source:
17	206779_s_at	1.63	2e-11	1e-07	1 x 17 acetylserotonin O-methyltransferase [Source:HGNC Symbol;
18	211430_s_at	0.73	3e-11	1e-07	0 x 4 immunoglobulin heavy constant gamma 2 (G2m marker) [Sou
19	209447_at	-1.4	3e-11	1e-07	49 x 39 spectrin repeat containing nuclear envelope protein 1 [Source
20	206228_at	1.6	4e-11	1e-07	24 x 34 paired box 2 [Source:HGNC Symbol;Acc:HGNC:8616]

Global Geneset Analysis

Rank	GSZ	p-value	#all	Geneset
<i>Overexpressed</i>				
1	14.11	NULL	85	Lymphoma DLBCL UP
2	11.81	NULL	90	GSEA C2BASSO_CD40_SIGNALING_UP
3	10.77	NULL	480	Cancer Lembecke_Colonc Inflammation
4	10.71	NULL	317	Cancer SPANG_BCL6-index2
5	10.5	NULL	196	HM HALLMARK_EPITHELIAL_MESENCHYMAL_TRANSITION
6	10.46	NULL	214	Lymphoma ENZ_Stromal signature 1
7	9.98	NULL	44	MF antigen binding
8	9.98	NULL	269	Glioma ScoV_0.5_Sturm_C3_Mesenchymal_DN
9	9.98	NULL	335	GSEA C2SCHUETZ_BREAST_CANCER_DUCTAL_INVASIVE_UP
10	9.71	NULL	397	GSEA C2REN_ALVEOLAR_RHABDOMYOSARCOMA_DN
11	9.51	NULL	52	BP complement activation, classical pathway
12	9.36	NULL	18	CC MHC class II protein complex
13	9.11	NULL	17	BP antigen processing and presentation of peptide or polysaccharide
14	9.05	NULL	447	Glioma ScoV_0.999_Sturm_E4_Mesenchymal_RTK1_PDGFR_A_DN
15	8.86	NULL	2239	CC extracellular exosome
16	8.86	NULL	1090	CC extracellular space
17	8.51	NULL	32	Reference Signatures_1_1_Plasma Cells
18	8.5	NULL	70	GSEA C2KIM_GLIS2_TARGETS_UP
19	8.47	NULL	40	BP antigen processing and presentation
20	8.42	NULL	10	Lymphoma TASCQUE_ABC UP
<i>Underexpressed</i>				
1	-11.04	NULL	4528	Chromatin State naive cells peripheral blood_4_Tx
2	-10.11	NULL	5456	Chromatin State Neuronal_Progenitor
3	-9.39	NULL	4683	Chromatin State fetal_midbrain_HetRpts
4	-9.3	NULL	7225	Chromatin State fetal_midbrain_ReprPC
5	-8.66	NULL	5601	Chromatin State naive cells peripheral blood_4_Tx
6	-8.63	NULL	6997	Chromatin State fetal_midbrain_K9K27me3
7	-8.57	NULL	5753	Chromatin State naive cells peripheral blood_4_Tx
8	-8.16	NULL	5527	Chromatin State memory cells peripheral blood_4_Tx
9	-8.04	NULL	6099	Chromatin State G1e_Tx
10	-7.93	NULL	5766	Chromatin State killer cells peripheral blood_4_Tx
11	-7.78	NULL	5738	Chromatin State macrophages peripheral blood_4_Tx
12	-7.78	NULL	3938	Chromatin State naive cells peripheral blood_6_EnhG
13	-7.7	NULL	1523	Glioma Hopp_Sturm_GBM_Epi3_E1_fetus_UP_fetus_DN
14	-7.69	NULL	6839	Chromatin State naive cells peripheral blood_5_TxWk
15	-7.58	NULL	7420	Chromatin State naive cells peripheral blood_1_TssA
16	-7.43	NULL	5529	Lymphoma OPP_Txn_elongation
17	-7.34	NULL	4261	Lymphoma OPP_Txn_transition
18	-7.18	NULL	2144	Chromatin State naive cells peripheral blood_6_EnhG
19	-7.05	NULL	480	Chr Chr 4
20	-6.99	NULL	1161	MF RNA binding

p-values

