

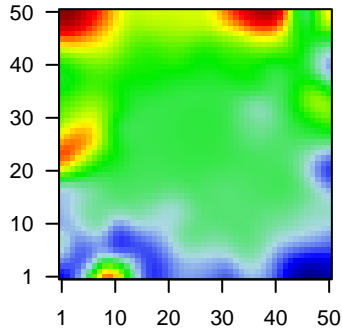
MPI-076

Global Summary

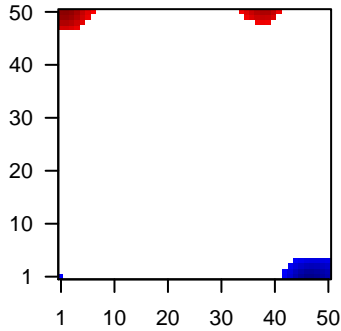
%DE = 0.04
 # genes with fdr < 0.2 = 469 (236 + / 233 -)
 # genes with fdr < 0.1 = 365 (188 + / 177 -)
 # genes with fdr < 0.05 = 286 (143 + / 143 -)
 # genes with fdr < 0.01 = 165 (92 + / 73 -)
 # genes in genesets = 13152

<FC> = 0
 <t-score> = 0.19
 <p-value> = 0.27
 <fdr> = 0.96

Portrait



Regulated Metagenes



Global Genelist

Rank	ID	log(FC)	fdr	p-value	Description
1	205590_at	-1.49	2e-16	4e-13	3 x 16 RAS guanyl releasing protein 1 [Source:HGNC Symbol;Acc:HGNC:1080]
2	209374_s_at	0.89	2e-16	4e-13	0 x 22 immunoglobulin heavy constant mu [Source:HGNC Symbol;Acc:HGNC:1080]
3	209606_at	-1.13	2e-16	4e-13	15 x 4 cytohesin 1 interacting protein [Source:HGNC Symbol;Acc:HGNC:1080]
4	209810_at	1.97	2e-16	4e-13	0 x 22 surfactant protein B [Source:HGNC Symbol;Acc:HGNC:1080]
5	212999_x_at	-1.69	2e-16	4e-13	49 x 17 major histocompatibility complex, class II, DQ beta 1 [Source:HGNC Symbol;Acc:HGNC:1080]
6	213831_at	-1.69	2e-16	4e-13	49 x 16 major histocompatibility complex, class II, DQ alpha 1 [Source:HGNC Symbol;Acc:HGNC:1080]
7	214290_s_at	-1.14	2e-16	4e-13	0 x 21 histone cluster 2 H2A family member a3 [Source:HGNC Symbol;Acc:HGNC:1080]
8	214669_x_at	1.01	2e-16	4e-13	0 x 3
9	219360_s_at	2.09	2e-16	4e-13	0 x 20 transient receptor potential cation channel subfamily M member 1 [Source:HGNC Symbol;Acc:HGNC:1080]
10	219667_s_at	-1.4	2e-16	4e-13	0 x 16 B cell scaffold protein with ankyrin repeats 1 [Source:HGNC Symbol;Acc:HGNC:1080]
11	221651_x_at	0.84	2e-16	4e-13	0 x 3 immunoglobulin kappa constant [Source:HGNC Symbol;Acc:HGNC:1080]
12	221671_x_at	0.87	2e-16	4e-13	0 x 3 immunoglobulin kappa constant [Source:HGNC Symbol;Acc:HGNC:1080]
13	210313_at	1.82	7e-16	2e-11	0 x 23 leukocyte immunoglobulin like receptor A4 [Source:HGNC Symbol;Acc:HGNC:1080]
14	211796_s_at	-0.86	3e-15	2e-11	10 x 9 T cell receptor beta constant 1 [Source:HGNC Symbol;Acc:HGNC:1080]
15	205242_at	-1.12	4e-15	2e-11	0 x 3 C-X-C motif chemokine ligand 13 [Source:HGNC Symbol;Acc:HGNC:1080]
16	204581_at	-0.99	4e-15	5e-10	49 x 41 CD22 molecule [Source:HGNC Symbol;Acc:HGNC:1643]
17	209995_s_at	1.06	4e-15	5e-10	46 x 49 T cell leukemia/lymphoma 1A [Source:HGNC Symbol;Acc:HGNC:1080]
18	220179_at	1.75	3e-14	5e-10	25 x 18 dipeptidase 3 [Source:HGNC Symbol;Acc:HGNC:23029]
19	201909_at	-1.11	7e-14	5e-10	43 x 49 ribosomal protein S4, Y-linked 1 [Source:HGNC Symbol;Acc:HGNC:1080]
20	39318_at	0.9	8e-14	9e-10	46 x 49 T cell leukemia/lymphoma 1A [Source:HGNC Symbol;Acc:HGNC:1080]

Global Geneset Analysis

Rank	GSZ	p-value	#all	Geneset
<i>Overexpressed</i>				
1	14.13	NULL	319	Melanoma Serber_wt/wt_melanoma-cells-SpotA
2	13.4	NULL	966	GSEA C2KINSEY_TARGETS_OF_EWSR1_FLII_FUSION_UP
3	12.63	NULL	439	GSEA C2SHEDDEN_LUNG_CANCER_POOR_SURVIVAL_A6
4	12.54	NULL	726	GSEA C2PUJANA_CHEK2_PCC_NETWORK
5	12.34	NULL	1052	GSEA C2DODD_NASOPHARYNGEAL_CARCINOMA_DN
6	12.32	NULL	1527	GSEA C2PUJANA_BRCA1_PCC_NETWORK
7	12.14	NULL	254	GSEA C2DUTERTRE_ESTRADIOL_RESPONSE_24HR_UP
8	11.85	NULL	137	GSEA C2ROSTY_CERVICAL_CANCER_PROLIFERATION_CLUSTER
9	11.59	NULL	7225	Chromatin state fetal_midbrain_ReprPC
10	11.43	NULL	431	GSEA C2GOBERT_OLIGODENDROCYTE_DIFFERENTIATION_UP
11	11.22	NULL	575	GSEA C2CAIRO_HEPATOBLASTOMA_CLASSES_UP
12	11.18	NULL	5529	Lymphoma OPP_Txn_elongation
13	11.02	NULL	8275	Chromatin state Fibroblasts
14	10.91	NULL	115	Glioma WILLSCHEER_GBM_Verhaak-CL_up (C)
15	10.81	NULL	509	GSEA C2RODRIGUES_THYROID_CARCINOMA_POORLY_DIFFERENTIATED
16	10.58	NULL	14	Cancer SOTIRIOU_BREAST_CANCER_GRADE_1_VS_3_UP
17	10.57	NULL	244	GSEA C2KOBAYASHI_EGFR_SIGNALING_24HR_DN
18	10.56	NULL	8766	Chromatin state Melanocytes
19	10.53	NULL	9576	Chromatin state MSC_Adipocyte
20	10.51	NULL	526	GSEA C2MARSON_BOUND_BY_E2F4_UNSTIMULATED
<i>Underexpressed</i>				
1	-12.1	NULL	33	Melanoma Tirosh_T-cell specific genes-melanoma
2	-11.75	NULL	102	Reference Set TUBEs/ B-cells
3	-10.88	NULL	2867	Chromatin state PCWk_MSC_Adipocyte
4	-10.65	NULL	56	Pneumonia Burnham_sep_vs_con_DN
5	-10.4	NULL	48	Pneumonia Burnham_cap_fp_vs_con_DN
6	-9.92	NULL	68	Reference Set Stabek_2.1_Cytotoxic cells
7	-9.52	NULL	589	Colon Cancer Becke_TCGA-expr_kmeans_E_CIMP.H_UP_Cluster4_DN
8	-9.39	NULL	15	Lymphoma Bare_Polarized immune response
9	-9.06	NULL	2374	Chromatin state PCWk_Fibroblasts
10	-8.89	NULL	2375	Chromatin state ReprPC_Fibroblasts
11	-8.8	NULL	2254	Chromatin state ReprPC_MSC_Adipocyte
12	-8.76	NULL	83	Melanoma CGA_melanoma Immune_high
13	-8.62	NULL	2408	Chromatin state PCWk_Skeletal_Muscle
14	-8.61	NULL	9	GSEA C2RUNNE_GENDER_EFFECT_UP
15	-8.36	NULL	1813	Chromatin state Fibroblasts
16	-8.09	NULL	2972	Chromatin state ReprPC_ESC_Endoderm
17	-8	NULL	2240	Chromatin state Fibroblasts
18	-7.96	NULL	2417	Chromatin state PCWk_Melanocytes
19	-7.9	NULL	2327	Chromatin state ReprPCWk_ESC_Mesoderm
20	-7.87	NULL	3110	Chromatin state ReprPCWk_ESC_Endoderm

p-values

