

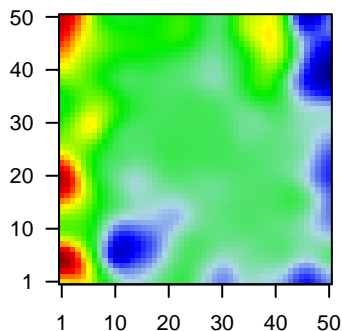
# MPI-073

## Global Summary

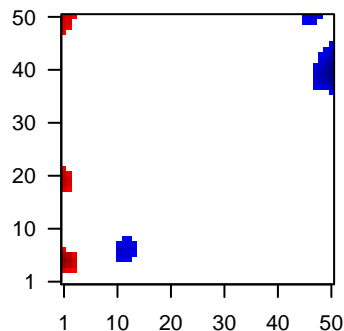
%DE = 0.05  
 # genes with fdr < 0.2 = 492 ( 286 + / 206 - )  
 # genes with fdr < 0.1 = 303 ( 191 + / 112 - )  
 # genes with fdr < 0.05 = 285 ( 180 + / 105 - )  
 # genes with fdr < 0.01 = 146 ( 102 + / 44 - )  
  
 # genes in genesets = 13152

<FC> = 0  
 <t-score> = 0.19  
 <p-value> = 0.27  
 <fdr> = 0.95

Portrait



Regulated Metagenes



## Global Genelist

Rank	ID	log(FC)	fdr	p-value	Description
1	201909_at	-1.51	2e-16	2e-12	43 x 49 ribosomal protein S4, Y-linked 1 [Source:HGNC Symbol;Acc:HGNC:1318]
2	205242_at	1.3	2e-16	2e-12	0 x 3 C-X-C motif chemokine ligand 13 [Source:HGNC Symbol;Acc:HGNC:1318]
3	217767_at	-1.39	2e-16	2e-12	5 x 3 complement C3 [Source:HGNC Symbol;Acc:HGNC:1318]
4	217022_s_at	-1.28	7e-16	9e-12	0 x 2 immunoglobulin heavy constant alpha 2 (A2m marker) [Source:HGNC Symbol;Acc:HGNC:6711]
5	207339_s_at	-0.9	1e-15	2e-11	49 x 19 lymphotoxin beta [Source:HGNC Symbol;Acc:HGNC:6711]
6	202538_s_at	-1.48	2e-15	2e-11	0 x 33 charged multivesicular body protein 2B [Source:HGNC Symbol;Acc:HGNC:7859]
7	206023_at	1.87	3e-15	2e-10	33 x 46 neuromedin U [Source:HGNC Symbol;Acc:HGNC:7859]
8	214470_at	1.82	1e-14	3e-09	9 x 8 killer cell lectin like receptor B1 [Source:HGNC Symbol;Acc:HGNC:7859]
9	219759_at	-1.48	3e-13	3e-09	49 x 24 endoplasmic reticulum aminopeptidase 2 [Source:HGNC Symbol;Acc:HGNC:7859]
10	219360_s_at	1.73	3e-13	5e-09	0 x 20 transient receptor potential cation channel subfamily M member 1 [Source:HGNC Symbol;Acc:HGNC:7859]
11	204891_s_at	-1.07	8e-13	5e-09	49 x 39 LCK proto-oncogene, Src family tyrosine kinase [Source:HGNC Symbol;Acc:HGNC:7859]
12	213831_at	1.05	9e-13	5e-09	49 x 16 major histocompatibility complex, class II, DQ alpha 1 [Source:HGNC Symbol;Acc:HGNC:7859]
13	202536_at	-1.19	1e-12	3e-08	13 x 18 charged multivesicular body protein 2B [Source:HGNC Symbol;Acc:HGNC:7859]
14	215379_x_at	0.74	3e-12	3e-08	41 x 42 immunoglobulin lambda constant 2 [Source:HGNC Symbol;Acc:HGNC:7859]
15	204430_s_at	1.13	3e-12	3e-08	34 x 48 solute carrier family 2 member 5 [Source:HGNC Symbol;Acc:HGNC:7859]
16	202274_at	1.42	7e-12	3e-08	0 x 4 actin, gamma 2, smooth muscle, enteric [Source:HGNC Symbol;Acc:HGNC:7859]
17	204580_at	-1.33	8e-12	3e-08	3 x 31 matrix metalloproteinase 12 [Source:HGNC Symbol;Acc:HGNC:7859]
18	203290_at	-1.42	8e-12	3e-08	7 x 0 major histocompatibility complex, class II, DQ alpha 2 [Source:HGNC Symbol;Acc:HGNC:7859]
19	218830_at	-0.88	9e-12	9e-08	37 x 33 ribosomal protein L26 like 1 [Source:HGNC Symbol;Acc:HGNC:7859]
20	221671_x_at	0.64	1e-11	1e-07	0 x 3 immunoglobulin kappa constant [Source:HGNC Symbol;Acc:HGNC:7859]

## Global Geneset Analysis

Rank	GSZ	p-value	#all	Geneset
<i>Overexpressed</i>				
1	12.35	NULL	700	Chr Chr 12
2	9.96	NULL	85	Lymphoma_kkema_BCL2 DN_BCL6 UP
3	9.51	NULL	85	Lymphoma_kkema_DLBC_L UP
4	8.33	NULL	2704	Chromatin_state_Fibroblasts
5	7.59	NULL	186	Cancer_SPANG_LPS-index2
6	7.52	NULL	18	Lymphoma_RIGHT_ABC UP
7	7.23	NULL	317	Cancer_SPANG_BCL6-index2
8	7.05	NULL	3803	Chromatin_state_Fibroblasts
9	6.91	NULL	173	Lymphoma_trecta_Light zone signature
10	6.59	NULL	353	Lymphoma_SPANG_CD40 6hrs DN
11	6.46	NULL	447	Glioma_ScoV_0.999_Sturm_E4_Mesenchymal_RTK1_PDGFR_A_DN
12	6.38	NULL	2204	Chromatin_state_ESC_Mesoderm
13	6.09	NULL	2380	Chromatin_state_1_Colon
14	6	NULL	7	GSEA_C2SOUCEK_MYC_TARGETS
15	5.98	NULL	3223	Chromatin_state_monocytes_peripheral_blood_6_EnhG
16	5.9	NULL	14	BP_cellular_response_to_zinc_ion
17	5.88	NULL	10	Lymphoma_kkema_ABC UP
18	5.84	NULL	634	Chromatin_state_Frontal_Lobe_Het
19	5.82	NULL	10	Lymphoma_kkema_ASCQUE_ABC UP
20	5.81	NULL	4261	Lymphoma_kkema_OPP_Txn_transition
<i>Underexpressed</i>				
1	-8.36	NULL	9	GSEA_C2RUNNE_GENDER_EFFECT_UP
2	-6.19	NULL	195	GSEA_C2HOLLMANN_APOPTOSIS_VIA_CD40_UP
3	-6.07	NULL	6244	Chromatin_state_Fibroblasts
4	-5.93	NULL	669	Chr Chr 6
5	-5.85	NULL	2993	Chromatin_state_monocytes_peripheral_blood_9_Het
6	-5.73	NULL	1004	Chromatin_state_monocytes_peripheral_blood_8_ZNF_Rpts
7	-5.64	NULL	1581	Chromatin_state_Het_Neuronal_Progenitor
8	-5.62	NULL	2548	Chromatin_state_Het
9	-5.56	NULL	778	Chromatin_state_monocytes_naive_cells_peripheral_blood_8_ZNF_Rpts
10	-5.56	NULL	1480	Chromatin_state_ZNF_MSC_Adipocyte
11	-5.5	NULL	4357	Lymphoma_kkema_OPP_Weak_txn
12	-5.47	NULL	2974	Chromatin_state_ESC_Endoderm
13	-5.46	NULL	52	BP_complement_activation_classical_pathway
14	-5.43	NULL	4214	Chromatin_state_monocytes_peripheral_blood_15_Quies
15	-5.34	NULL	2325	Chromatin_state_ZNF_Rpts
16	-5.24	NULL	1025	Chromatin_state_monocytes_peripheral_blood_8_ZNF_Rpts
17	-5.2	NULL	1353	Chromatin_state_monocytes_naive_cells_peripheral_blood_9_Het
18	-5.18	NULL	738	Colon_Cancer_bckc_TCGA-expr_kmeans_N_CIMP_H_DN
19	-5.09	NULL	3554	Chromatin_state_ZNF_Rpts_ESC_Endoderm
20	-4.88	NULL	2626	Chromatin_state_ZNF_Rpts_ESC_Mesoderm

p-values

