

MPI-072

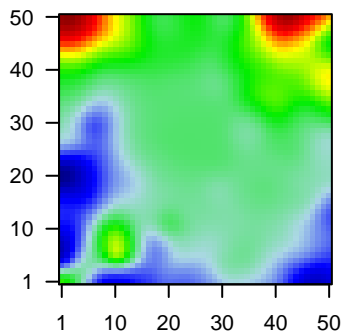
Global Summary

%DE = 0.04
 # genes with fdr < 0.2 = 357 (206 + / 151 -)
 # genes with fdr < 0.1 = 215 (139 + / 76 -)
 # genes with fdr < 0.05 = 168 (109 + / 59 -)
 # genes with fdr < 0.01 = 93 (62 + / 31 -)

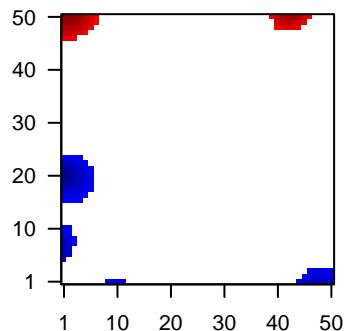
 # genes in genesets = 13152

<FC> = 0
 <t-score> = 0.21
 <p-value> = 0.29
 <fdr> = 0.96

Portrait



Regulated Metagenes



Global Genelist

Rank	ID	log(FC)	fdr	p-value	Description
1	201909_at	1.25	2e-16	5e-12	43 x 49 ribosomal protein S4, Y-linked 1 [Source:HGNC Symbol;Acc:HGNC:10000]
2	211644_x_at	1.55	1e-14	4e-09	0 x 1 immunoglobulin kappa variable 3-20 [Source:HGNC Symbol;Acc:HGNC:10000]
3	214957_at	1.73	2e-13	1e-08	12 x 28 actin like 8 [Source:HGNC Symbol;Acc:HGNC:24018]
4	217002_s_at	1.89	8e-13	6e-08	3 x 5 5-hydroxytryptamine receptor 3A [Source:HGNC Symbol;Acc:HGNC:10000]
5	216853_x_at	1.64	3e-12	9e-08	11 x 5 immunoglobulin lambda variable 3-19 [Source:HGNC Symbol;Acc:HGNC:10000]
6	215379_x_at	0.72	1e-11	9e-08	41 x 42 immunoglobulin lambda constant 2 [Source:HGNC Symbol;Acc:HGNC:10000]
7	220643_s_at	-1.12	1e-11	1e-07	35 x 47 Fas apoptotic inhibitory molecule [Source:HGNC Symbol;Acc:HGNC:10000]
8	210244_at	1.58	2e-11	2e-06	45 x 49 cathelicidin antimicrobial peptide [Source:HGNC Symbol;Acc:HGNC:10000]
9	203290_at	-1.31	2e-10	2e-06	7 x 0 major histocompatibility complex, class II, DQ alpha 2 [Source:HGNC Symbol;Acc:HGNC:10000]
10	211634_x_at	1.48	3e-10	2e-06	10 x 5 immunoglobulin heavy variable 1-69 [Source:HGNC Symbol;Acc:HGNC:10000]
11	206023_at	1.48	4e-10	2e-06	33 x 46 neuromedin U [Source:HGNC Symbol;Acc:HGNC:7859]
12	203535_at	-1.44	4e-10	2e-06	0 x 0 S100 calcium binding protein A9 [Source:HGNC Symbol;Acc:HGNC:10000]
13	202998_s_at	-1.26	5e-10	2e-06	7 x 0 lysyl oxidase like 2 [Source:HGNC Symbol;Acc:HGNC:6666]
14	217414_x_at	-1.23	8e-10	2e-06	6 x 29 hemoglobin subunit alpha 2 [Source:HGNC Symbol;Acc:HGNC:10000]
15	220068_at	0.91	8e-10	2e-06	49 x 39 V-set pre-B cell surrogate light chain 3 [Source:HGNC Symbol;Acc:HGNC:10000]
16	206394_at	1.45	8e-10	2e-06	46 x 17 myosin binding protein C, fast type [Source:HGNC Symbol;Acc:HGNC:10000]
17	216615_s_at	1.44	9e-10	2e-06	2 x 5 5-hydroxytryptamine receptor 3A [Source:HGNC Symbol;Acc:HGNC:10000]
18	217148_x_at	1.18	9e-10	2e-05	10 x 5 immunoglobulin lambda variable 2-14 [Source:HGNC Symbol;Acc:HGNC:10000]
19	211430_s_at	0.64	3e-09	2e-05	0 x 4 immunoglobulin heavy constant gamma 2 (G2m marker) [Source:HGNC Symbol;Acc:HGNC:10000]
20	206163_at	1.39	4e-09	2e-05	28 x 37 mab-21 like 1 [Source:HGNC Symbol;Acc:HGNC:6757]

Global Geneset Analysis

Rank	GSZ	p-value	#all	Geneset
<i>Overexpressed</i>				
1	15.23	NULL	1527	GSEA C2PUJANA_BRCA1_PCC_NETWORK
2	14.86	NULL	726	GSEA C2PUJANA_CHEK2_PCC_NETWORK
3	13.98	NULL	966	GSEA C2KINSEY_TARGETS_OF_EWSR1_FLII_FUSION_UP
4	12.47	NULL	52	BP complement activation, classical pathway
5	12.37	NULL	44	MF antigen binding
6	12.34	NULL	400	GSEA C2PUJANA_BRCA2_PCC_NETWORK
7	12.21	NULL	319	MelanomaGerber_wt/wt_melanoma-cells-SpotA
8	11.87	NULL	280	GSEA C2MANALO_HYPOXIA_DN
9	11.73	NULL	244	GSEA C2KOBAYASHI_EGFR_SIGNALING_24HR_DN
10	11.56	NULL	1052	GSEA C2DODD_NASOPHARYNGEAL_CARCINOMA_DN
11	11.4	NULL	439	GSEA C2SHEDDEN_LUNG_CANCER_POOR_SURVIVAL_A6
12	11.01	NULL	575	GSEA C2CAIRO_HEPATOBLASTOMA_CLASSES_UP
13	10.99	NULL	4261	LymphomaHOPP_Txn_transition
14	10.96	NULL	187	HM HALLMARK_E2F_TARGETS
15	10.87	NULL	431	GSEA C2GOBERT_OLIGODENDROCYTE_DIFFERENTIATION_UP
16	10.83	NULL	7420	ChromatinHOPperipheral blood_1_TssA
17	10.66	NULL	115	Glioma WILLSCHEER_GBM_Verhaak-CL_up (C)
18	10.66	NULL	99	LymphomaGha_BL UP
19	10.38	NULL	703	GSEA C2LEE_BMP2_TARGETS_DN
20	10.21	NULL	192	LymphomaHOPtacta_Dark zone signature
<i>Underexpressed</i>				
1	-9.83	NULL	3272	ChromatinHOPneutrophils peripheral blood_14_ReprPCWk
2	-9.14	NULL	3918	ChromatinHOPperipheral blood_14_ReprPCWk
3	-8.95	NULL	3734	ChromatinHOPperipheral blood_13_ReprPC
4	-8.92	NULL	3089	ChromatinHOPregulatory cells peripheral blood_14_ReprPCWk
5	-8.85	NULL	3150	ChromatinHOPneutrophils peripheral blood_13_ReprPC
6	-8.66	NULL	3724	ChromatinHOPperipheral blood_12_EnhBiv
7	-8.65	NULL	3184	ChromatinHOPneutrophils peripheral blood_12_EnhBiv
8	-8.6	NULL	2984	ChromatinHOPnatural killer cells peripheral blood_14_ReprPCWk
9	-8.48	NULL	2600	ChromatinHOPG1et1_ReprPCWk
10	-8.36	NULL	3001	ChromatinHOPperipheral blood_14_ReprPCWk
11	-8.26	NULL	2515	ChromatinHOPnatural killer cells peripheral blood_13_ReprPC
12	-8.21	NULL	2765	ChromatinHOPregulatory cells peripheral blood_13_ReprPC
13	-8.18	NULL	317	Cancer SPANG_BCL6-index2
14	-8.09	NULL	2700	ChromatinHOPregulatory cells peripheral blood_14_ReprPCWk
15	-8.05	NULL	2747	ChromatinHOPperipheral blood_12_EnhBiv
16	-8.03	NULL	2535	ChromatinHOPnaive cells peripheral blood_14_ReprPCWk
17	-7.71	NULL	2173	ChromatinHOPG1et3_ReprPC
18	-7.71	NULL	4079	ChromatinHOPStiles_ESC_Endoderm
19	-7.66	NULL	1930	ChromatinHOPStilesEssA
20	-7.66	NULL	3825	ChromatinHOPperipheral blood_15_Quies

p-values

