

MPI-070

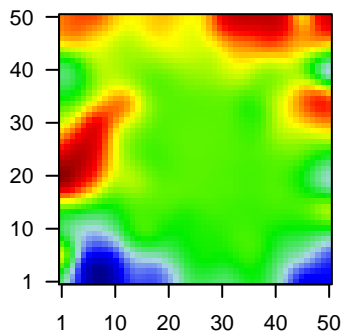
Global Summary

%DE = 0.05
 # genes with fdr < 0.2 = 632 (355 + / 277 -)
 # genes with fdr < 0.1 = 476 (264 + / 212 -)
 # genes with fdr < 0.05 = 389 (211 + / 178 -)
 # genes with fdr < 0.01 = 193 (110 + / 83 -)

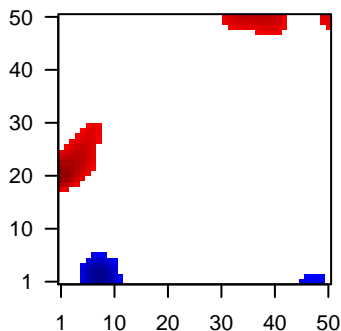
 # genes in genesets = 13152

<FC> = 0
 <t-score> = 0.02
 <p-value> = 0.25
 <fdr> = 0.95

Portrait



Regulated Metagenes



Global Genelist

Rank	ID	log(FC)	fdr	p-value	Description
1	201425_at	-1.39	2e-16	3e-13	7 x 3 aldehyde dehydrogenase 2 family (mitochondrial) [Source:HGNC]
2	203509_at	-1.59	2e-16	3e-13	49 x 40 sortilin related receptor 1 [Source:HGNC Symbol;Acc:HGNC:2396]
3	206843_at	2.38	2e-16	3e-13	11 x 33 crystallin beta A4 [Source:HGNC Symbol;Acc:HGNC:2396]
4	207534_at	2.19	2e-16	3e-13	1 x 16 MAGE family member B1 [Source:HGNC Symbol;Acc:HGNC:2396]
5	211639_x_at	2.72	2e-16	3e-13	20 x 13 immunoglobulin heavy variable 4-34 [Source:HGNC Symbol;Acc:HGNC:2396]
6	212560_at	-1.74	2e-16	3e-13	49 x 40 sortilin related receptor 1 [Source:HGNC Symbol;Acc:HGNC:2396]
7	214669_x_at	-1.66	2e-16	3e-13	0 x 3
8	214836_x_at	-1.31	2e-16	3e-13	0 x 3
9	215121_x_at	0.95	2e-16	3e-13	41 x 42 immunoglobulin lambda constant 2 [Source:HGNC Symbol;Acc:HGNC:2396]
10	215379_x_at	1.16	2e-16	3e-13	41 x 42 immunoglobulin lambda constant 2 [Source:HGNC Symbol;Acc:HGNC:2396]
11	216365_x_at	2.61	2e-16	3e-13	11 x 5
12	216853_x_at	3.73	2e-16	3e-13	11 x 5 immunoglobulin lambda variable 3-19 [Source:HGNC Symbol;Acc:HGNC:2396]
13	221651_x_at	-2.36	2e-16	3e-13	0 x 3 immunoglobulin kappa constant [Source:HGNC Symbol;Acc:HGNC:2396]
14	221671_x_at	-1.93	2e-16	3e-13	0 x 3 immunoglobulin kappa constant [Source:HGNC Symbol;Acc:HGNC:2396]
15	202031_s_at	-1.27	7e-16	2e-11	47 x 19 WD repeat domain, phosphoinositide interacting 2 [Source:HGNC Symbol;Acc:HGNC:2396]
16	206498_at	2.11	3e-15	2e-11	28 x 2 OCA2 melanosomal transmembrane protein [Source:HGNC Symbol;Acc:HGNC:2396]
17	214677_x_at	0.81	3e-15	3e-11	41 x 42 immunoglobulin lambda constant 2 [Source:HGNC Symbol;Acc:HGNC:2396]
18	209374_s_at	0.93	5e-15	3e-11	0 x 22 immunoglobulin heavy constant mu [Source:HGNC Symbol;Acc:HGNC:2396]
19	212311_at	-1.14	6e-15	6e-11	49 x 39 SEL1L family member 3 [Source:HGNC Symbol;Acc:HGNC:2396]
20	209138_x_at	0.8	8e-15	3e-11	41 x 42 immunoglobulin lambda constant 2 [Source:HGNC Symbol;Acc:HGNC:2396]

Global Geneset Analysis

Rank	GSZ	p-value	#all	Geneset
<i>Overexpressed</i>				
1	11.81	NULL	7225	Chromatin state: fetal_midbrain_ReprPC
2	11.09	NULL	5908	Lymphoid tissue: OPP_Active_promoter
3	10.65	NULL	7833	Chromatin state: peripheral_blood_1_TssA
4	10	NULL	8068	Chromatin state: naive_cells_peripheral_blood_1_TssA
5	9.89	NULL	7420	Chromatin state: peripheral_blood_1_TssA
6	9.83	NULL	5529	Lymphoid tissue: OPP_Txn_elongation
7	9.75	NULL	726	GSEA C2PUJANA_CHEK2_PCC_NETWORK
8	9.61	NULL	7957	Chromatin state: peripheral_blood_2_TssAFInk
9	9.59	NULL	7751	Chromatin state: killer_cells_peripheral_blood_1_TssA
10	9.57	NULL	8322	Chromatin state: naive_cells_peripheral_blood_1_TssA
11	9.53	NULL	18	Lymphoid tissue: WRIGHT_ABC_UP
12	9.38	NULL	8406	Chromatin state: peripheral_blood_2_TssAFInk
13	9.36	NULL	8816	Chromatin state: naive_cells_peripheral_blood_2_TssAFInk
14	9.3	NULL	966	GSEA C2KINSEY_TARGETS_OF_EWSR1_FLII_FUSION_UP
15	9.29	NULL	8245	Chromatin state: regulatory_cells_peripheral_blood_2_TssAFInk
16	9.2	NULL	8431	Chromatin state: naive_cells_peripheral_blood_1_TssA
17	9.09	NULL	669	GSEA C2JOHNSTONE_PARVB_TARGETS_3_DN
18	8.99	NULL	728	GSEA C2KRIGE_RESPONSE_TO_TOSEDOSTAT_24HR_DN
19	8.91	NULL	1527	GSEA C2PUJANA_BRCA1_PCC_NETWORK
20	8.84	NULL	7930	Chromatin state: regulatory_cells_peripheral_blood_1_TssA
<i>Underexpressed</i>				
1	-13.79	NULL	214	Lymphoid tissue: ENZ_Stromal_signature_1
2	-10.86	NULL	176	GSEA C2PICCALUGA_ANGIOIMMUNOBLASTIC_LYMPHOMA_UP
3	-10.34	NULL	335	GSEA C2SCHUETZ_BREAST_CANCER_DUCTAL_INVASIVE_UP
4	-9.94	NULL	2507	Chromatin state: testis_Lobe_ReprPC
5	-9.98	NULL	331	GSEA C2JINDGREN_BLADDER_CANCER_CLUSTER_2B
6	-8.96	NULL	747	GSEA C2NABA_MATRISOME
7	-8.76	NULL	196	HM HALLMARK_EPITHELIAL_MESENCHYMAL_TRANSITION
8	-8.68	NULL	1090	CC extracellular space
9	-8.46	NULL	212	CC extracellular matrix
10	-8.37	NULL	3168	Lymphoid tissue: OPP_Repressed
11	-8.37	NULL	1611	CC extracellular region
12	-8.35	NULL	3734	Chromatin state: peripheral_blood_13_ReprPC
13	-8.32	NULL	354	GSEA C2RODWELL_AGING_KIDNEY_UP
14	-8.3	NULL	3724	Chromatin state: peripheral_blood_12_EnhBiv
15	-8.27	NULL	6	Lymphoid tissue: Bare_GCB_UP
16	-8.03	NULL	231	Glioma WILLSCHER_GBM_Verhaak-CL & MES_up
17	-7.92	NULL	447	Glioma ScoV_0.999_Sturm_E4_Mesenchymal_RTK_1_PDGFR_A_DN
18	-7.88	NULL	18	CC MHC class II protein complex
19	-7.87	NULL	2203	Chromatin state: Colon
20	-7.84	NULL	3210	CC plasma membrane

p-values

