

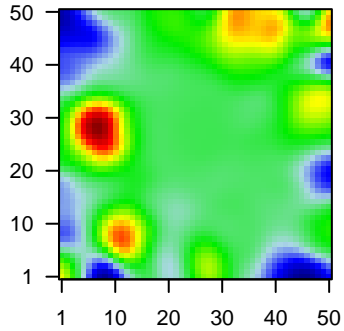
MPI-061

Global Summary

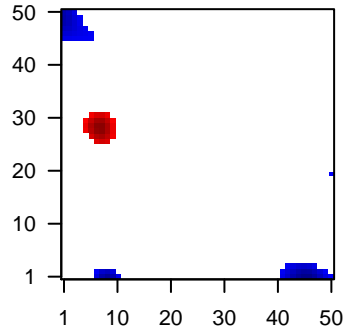
%DE = 0.04
 # genes with $fdr < 0.2 = 526$ (264 + / 262 -)
 # genes with $fdr < 0.1 = 372$ (181 + / 191 -)
 # genes with $fdr < 0.05 = 309$ (151 + / 158 -)
 # genes with $fdr < 0.01 = 168$ (89 + / 79 -)
 # genes in genesets = 13152

<FC> = 0
 <t-score> = 0.04
 <p-value> = 0.26
 <fdr> = 0.96

Portrait



Regulated Metagenes



Global Genelist

Rank	ID	log(FC)	fdr p-value	Description
1	39318_at	-1.93	2e-16 3e-13	46 x 49 T cell leukemia/lymphoma 1A [Source:HGNC Symbol;Acc:HGNC:10000]
2	201909_at	-1.46	2e-16 3e-13	43 x 49 ribosomal protein S4, Y-linked 1 [Source:HGNC Symbol;Acc:HGNC:10000]
3	204004_at	-1.96	2e-16 3e-13	47 x 39 pro-apoptotic WT1 regulator [Source:HGNC Symbol;Acc:HGNC:10000]
4	205229_s_at	-2.18	2e-16 3e-13	39 x 49 cochlin [Source:HGNC Symbol;Acc:HGNC:2180]
5	209138_x_at	0.89	2e-16 3e-13	41 x 42 immunoglobulin lambda constant 2 [Source:HGNC Symbol;Acc:HGNC:10000]
6	209988_s_at	2.24	2e-16 3e-13	28 x 0 achaete-scute family bHLH transcription factor 1 [Source:HGNC Symbol;Acc:HGNC:10000]
7	209995_s_at	-1.65	2e-16 3e-13	46 x 49 T cell leukemia/lymphoma 1A [Source:HGNC Symbol;Acc:HGNC:10000]
8	210258_at	-2.43	2e-16 3e-13	49 x 40 regulator of G protein signaling 13 [Source:HGNC Symbol;Acc:HGNC:10000]
9	210432_s_at	2.21	2e-16 3e-13	10 x 28 sodium voltage-gated channel alpha subunit 3 [Source:HGNC Symbol;Acc:HGNC:10000]
10	211798_x_at	2.13	2e-16 3e-13	10 x 5
11	213831_at	-1.59	2e-16 3e-13	49 x 16 major histocompatibility complex, class II, DQ alpha 1 [Source:HGNC Symbol;Acc:HGNC:10000]
12	214677_x_at	1.02	2e-16 3e-13	41 x 42 immunoglobulin lambda constant 2 [Source:HGNC Symbol;Acc:HGNC:10000]
13	215121_x_at	0.89	2e-16 3e-13	41 x 42 immunoglobulin lambda constant 2 [Source:HGNC Symbol;Acc:HGNC:10000]
14	216365_x_at	2.94	2e-16 3e-13	11 x 5
15	216449_x_at	1.05	2e-16 3e-13	5 x 28 heat shock protein 90 beta family member 1 [Source:HGNC Symbol;Acc:HGNC:10000]
16	216557_x_at	2.12	2e-16 3e-13	10 x 5 immunoglobulin heavy variable 3-21 [Source:HGNC Symbol;Acc:HGNC:10000]
17	216853_x_at	3.78	2e-16 3e-13	11 x 5 immunoglobulin lambda variable 3-19 [Source:HGNC Symbol;Acc:HGNC:10000]
18	219117_s_at	1.16	7e-16 1e-11	7 x 29 FK506 binding protein 11 [Source:HGNC Symbol;Acc:HGNC:10000]
19	200872_at	-1	1e-15 3e-11	4 x 13 S100 calcium binding protein A10 [Source:HGNC Symbol;Acc:HGNC:10000]
20	204174_at	-1.09	3e-15 1e-10	49 x 19 arachidonate 5-lipoxygenase activating protein [Source:HGNC Symbol;Acc:HGNC:10000]

Global Geneset Analysis

Rank	GSZ	p-value	#all	Geneset
<i>Overexpressed</i>				
1	16.36	NULL	75	GSEA C2TARTE_PLASMA_CELL_VS_B_LYMPHOCYTE_UP
2	16.22	NULL	77	LymphomaTARTE_Plasma cell signature
3	11.98	NULL	728	GSEA C2KRIGE_RESPONSE_TO_TOSEDOSTAT_24HR_DN
4	11.08	NULL	5908	LymphomaTARTE_Active_promoter
5	10.52	NULL	5529	LymphomaTARTE_Txn_elongation
6	10.48	NULL	651	GSEA C2KRIGE_RESPONSE_TO_TOSEDOSTAT_6HR_DN
7	10.17	NULL	7420	ChromatinTARTE_peripheral_blood_1_TssA
8	10.13	NULL	7930	ChromatinTARTE_regulatory_cells_peripheral_blood_1_TssA
9	10.12	NULL	233	GSEA C2PENG_RAPAMYCIN_RESPONSE_DN
10	10.05	NULL	5527	ChromatinTARTE_regulatory_cells_peripheral_blood_4_Tx
11	9.94	NULL	7635	ChromatinTARTE_lymphocytes_peripheral_blood_1_TssA
12	9.57	NULL	5753	ChromatinTARTE_peripheral_blood_4_Tx
13	9.44	NULL	616	GSEA C2WEI_MYCN_TARGETS_WITH_E_BOX
14	9.43	NULL	7957	ChromatinTARTE_peripheral_blood_2_TssAFlnk
15	9.38	NULL	8245	ChromatinTARTE_regulatory_cells_peripheral_blood_2_TssAFlnk
16	9.31	NULL	7751	ChromatinTARTE_killer_cells_peripheral_blood_1_TssA
17	9.28	NULL	216	GSEA C2PASQUALUCCI_LYMPHOMA_BY_GC_STAGE_UP
18	9.27	NULL	40	GSEA C2FARMER_BREAST_CANCER_CLUSTER_1
19	9.23	NULL	71	GSEA C2REACTOME_ASPARAGINE_N_LINKED_GLYCOSYLATION
20	9.23	NULL	6099	ChromatinTARTE_Tx
<i>Underexpressed</i>				
1	-12.61	NULL	56	GSEA C2KLEIN_PRIMARY_EFFUSION_LYMPHOMA_DN
2	-10.94	NULL	35	GSEA C2TARTE_PLASMA_CELL_VS_B_LYMPHOCYTE_DN
3	-10.7	NULL	34	LymphomaTARTE_B-cell signature
4	-10.04	NULL	693	ChromatinTARTE_peripheral_blood_3_TxFlnk
5	-9.53	NULL	3734	ChromatinTARTE_peripheral_blood_13_ReprPC
6	-9.13	NULL	3724	ChromatinTARTE_peripheral_blood_12_EnhBiv
7	-9.12	NULL	2765	ChromatinTARTE_regulatory_cells_peripheral_blood_13_ReprPC
8	-8.9	NULL	2148	ChromatinTARTE_ReprPC_Skeletal_Muscle
9	-8.85	NULL	186	GSEA C2PENG_RAPAMYCIN_RESPONSE_UP
10	-8.82	NULL	3918	ChromatinTARTE_peripheral_blood_14_ReprPCWk
11	-8.69	NULL	63	GSEA C2ANASTASSIOU_CANCER_MESENCHYMAL_TRANSITION_SIGNATURE
12	-8.67	NULL	1943	ChromatinTARTE_Colon
13	-8.53	NULL	3168	LymphomaTARTE_Repressed
14	-8.48	NULL	1813	ChromatinTARTE_Fibroblasts
15	-8.43	NULL	51	GSEA C2MORI_LARGE_PRE_BII_LYMPHOCYTE_DN
16	-8.34	NULL	2154	ChromatinTARTE_regulatory_cells_peripheral_blood_11_BivFlnk
17	-8.33	NULL	2984	ChromatinTARTE_killer_cells_peripheral_blood_14_ReprPCWk
18	-8.3	NULL	2375	ChromatinTARTE_ReprPC_Fibroblasts
19	-8.26	NULL	42	ReferenceC2Signatures_1_3_B-cells
20	-8.24	NULL	2240	ChromatinTARTE_Fibroblasts

p-values

