

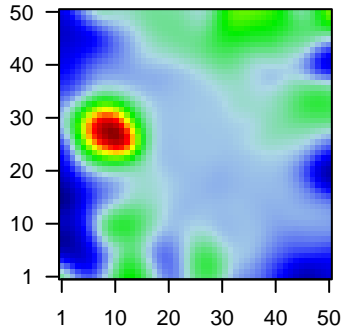
MPI-060

Global Summary

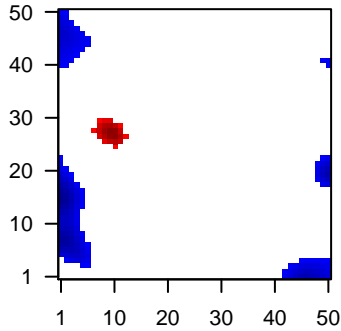
%DE = 0.06
 # genes with $fdr < 0.2$ = 881 (446 + / 435 -)
 # genes with $fdr < 0.1$ = 704 (356 + / 348 -)
 # genes with $fdr < 0.05$ = 561 (280 + / 281 -)
 # genes with $fdr < 0.01$ = 401 (201 + / 200 -)
 # genes in genesets = 13152

<FC> = 0
 <t-score> = -0.26
 <p-value> = 0.21
 <fdr> = 0.94

Portrait



Regulated Metagenes



Global Genelist

Rank	ID	log(FC)	fdr	p-value	Description
1	AFFX-HUMR	2.76	2e-16	8e-14	49 x 47 microRNA 3687-2 [Source:HGNC Symbol;Acc:HGNC:50835]
2	AFFX-r2-Hs1	2.46	2e-16	8e-14	49 x 47
3	AFFX-r2-Hs1	3.08	2e-16	8e-14	49 x 47
4	266_s_at	-1.99	2e-16	8e-14	44 x 49 CD24 molecule [Source:HGNC Symbol;Acc:HGNC:1645]
5	38521_at	-1.57	2e-16	8e-14	49 x 20 CD22 molecule [Source:HGNC Symbol;Acc:HGNC:1643]
6	200934_at	-1.18	2e-16	8e-14	46 x 29 DEK proto-oncogene [Source:HGNC Symbol;Acc:HGNC:276]
7	201850_at	-1.46	2e-16	8e-14	4 x 3 capping actin protein, gelsolin like [Source:HGNC Symbol;Acc:HGNC:10000]
8	203233_at	-1.5	2e-16	8e-14	49 x 20 interleukin 4 receptor [Source:HGNC Symbol;Acc:HGNC:601]
9	204004_at	-2	2e-16	8e-14	47 x 39 pro-apoptotic WT1 regulator [Source:HGNC Symbol;Acc:HGNC:10000]
10	204057_at	-1.2	2e-16	8e-14	49 x 19 interferon regulatory factor 8 [Source:HGNC Symbol;Acc:HGNC:10000]
11	204319_s_at	-1.46	2e-16	8e-14	1 x 8 regulator of G protein signaling 10 [Source:HGNC Symbol;Acc:HGNC:10000]
12	204416_x_at	-1.31	2e-16	8e-14	5 x 3 apolipoprotein C1 [Source:HGNC Symbol;Acc:HGNC:607]
13	204581_at	-2	2e-16	8e-14	49 x 41 CD22 molecule [Source:HGNC Symbol;Acc:HGNC:1643]
14	204661_at	-1.18	2e-16	8e-14	49 x 18 CD52 molecule [Source:HGNC Symbol;Acc:HGNC:1804]
15	205049_s_at	-2.13	2e-16	8e-14	0 x 40 CD79a molecule [Source:HGNC Symbol;Acc:HGNC:1698]
16	205780_at	-2.54	2e-16	8e-14	40 x 49 BCL2 interacting killer [Source:HGNC Symbol;Acc:HGNC:10000]
17	205861_at	-3.47	2e-16	8e-14	0 x 23 Spi-B transcription factor [Source:HGNC Symbol;Acc:HGNC:10000]
18	206126_at	-1.89	2e-16	8e-14	1 x 17 C-X-C motif chemokine receptor 5 [Source:HGNC Symbol;Acc:HGNC:10000]
19	206255_at	-2.24	2e-16	8e-14	48 x 45 BLK proto-oncogene, Src family tyrosine kinase [Source:HGNC Symbol;Acc:HGNC:10000]
20	206398_s_at	-1.89	2e-16	8e-14	49 x 19 CD19 molecule [Source:HGNC Symbol;Acc:HGNC:1633]

Global Geneset Analysis

Rank	GSZ	p-value	#all	Geneset
<i>Overexpressed</i>				
1	14.89	NULL	77	LymphomBARTe_Plasma cell signature
2	14.05	NULL	75	GSEA C2TARTE_PLASMA_CELL_VS_B_LYMPHOCYTE_UP
3	9.64	NULL	7225	ChromatinState_fetal_midbrain_ReprPC
4	9.58	NULL	1052	GSEA C2ODD_NASOPHARYNGEAL_CARCINOMA_DN
5	9.38	NULL	216	GSEA C2PASQUALUCCI_LYMPHOMA_BY_GC_STAGE_UP
6	9.23	NULL	96	GSEA C2SHAFFER_IRF4_TARGETS_IN_MYELOMA_VS_MATURE_B_LYMPHOCYTES
7	9.04	NULL	1035	CC endoplasmic reticulum
8	8.3	NULL	683	CC endoplasmic reticulum membrane
9	7.79	NULL	5	GSEA C2BIERIE_INFLAMMATORY_RESPONSE_TGFB1
10	7.64	NULL	71	GSEA C2REACTOME_ASPARAGINE_N_LINKED_GLYCOSYLATION
11	7.62	NULL	64	GSEA C2SHAFFER_IRF4_TARGETS_IN_PLASMA_CELL_VS_MATURE_B_LYMPHOCYTES
12	7.51	NULL	71	BP response to endoplasmic reticulum stress
13	7.49	NULL	64	GSEA C2SHAFFER_IRF4_TARGETS_IN_ACTIVATED_DENDRITIC_CELL_VS_MATURE_B_LYMPHOCYTES
14	7.45	NULL	509	GSEA C2RODRIGUES_THYROID_CARCINOMA_POORLY_DIFFERENTIATED_CARCINOMA
15	7.39	NULL	518	GSEA C2MILI_PSEUDOPODIA_HAPTOTAXIS_DN
16	7.35	NULL	669	GSEA C2JOHNSTONE_PARVB_TARGETS_3_DN
17	7.09	NULL	8275	ChromatinState_Fibroblasts
18	7.09	NULL	23	GSEA C2GRAHAM_CML QUIESCENT_VS_CML_DIVIDING_UP
19	7.01	NULL	325	GSEA C2REACTOME_METABOLISM_OF_PROTEINS
20	6.87	NULL	79	GSEA C2MAHAJAN_RESPONSE_TO_IL1A_UP
<i>Underexpressed</i>				
1	-25.32	NULL	56	GSEA C2KLEIN_PRIMARY_EFFUSION_LYMPHOMA_DN
2	-17.92	NULL	24	MelanomaTirosh_B-cell specific genes-melanoma
3	-17.19	NULL	42	ReferenceCluster_1_3_B-cells
4	-17.12	NULL	35	GSEA C2TARTE_PLASMA_CELL_VS_B_LYMPHOCYTE_DN
5	-16.73	NULL	34	LymphomBARTe_B-cell signature
6	-15.33	NULL	51	GSEA C2MORI_LARGE_PRE_BII_LYMPHOCYTE_DN
7	-15.18	NULL	45	LymphomBARTe_BCR_cluster
8	-15.16	NULL	693	ChromatinState_peripheral_blood_3_TxFlnk
9	-14.26	NULL	19	GSEA C2SHIN_B_CELL_LYMPHOMA_CLUSTER_9
10	-13.28	NULL	121	GSEA C2PASQUALUCCI_LYMPHOMA_BY_GC_STAGE_DN
11	-13.15	NULL	40	GSEA C2YU_MYC_TARGETS_DN
12	-13.11	NULL	25	GSEA C2MORI_PLASMA_CELL_DN
13	-12.96	NULL	229	GSEA C2O1_PLASMACYTOMA_UP
14	-12.43	NULL	39	BP B cell receptor signaling pathway
15	-11.85	NULL	72	GSEA C2MORI_MATURE_B_LYMPHOCYTE_UP
16	-10.89	NULL	16	MF MHC class II protein complex binding
17	-10.25	NULL	46	GSEA C2MORI_IMMATURE_B_LYMPHOCYTE_UP
18	-9.99	NULL	90	GSEA C2BASSO_CD40_SIGNALING_UP
19	-9.83	NULL	18	CC MHC class II protein complex
20	-9.67	NULL	85	LymphomBARTe_DLBCL_UP

p-values

