

MPI-059

Global Summary

%DE = 0.06
 # genes with fdr < 0.2 = 924 (575 + / 349 -)
 # genes with fdr < 0.1 = 619 (405 + / 214 -)
 # genes with fdr < 0.05 = 508 (330 + / 178 -)
 # genes with fdr < 0.01 = 314 (217 + / 97 -)

 # genes in genesets = 13152

 <FC> = 0
 <t-score> = 0.05
 <p-value> = 0.23
 <fdr> = 0.94

Global Genelist

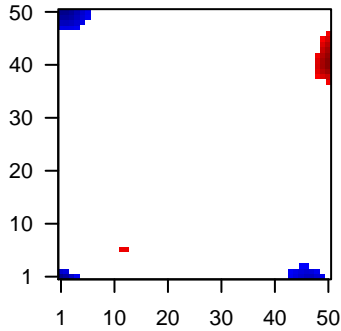
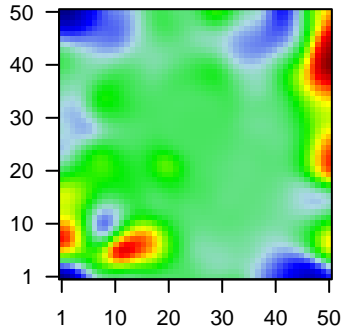
Rank	ID	log(FC)	fdr	p-value	Description
1	202917_s_at	-1.63	2e-16	3e-13	0 x 0 S100 calcium binding protein A8 [Source:HGNC Symbol;Acc:HGNC:1631]
2	203645_s_at	-1.93	2e-16	3e-13	8 x 10 CD163 molecule [Source:HGNC Symbol;Acc:HGNC:1631]
3	206018_at	2.94	2e-16	3e-13	6 x 32 forkhead box G1 [Source:HGNC Symbol;Acc:HGNC:3811]
4	206042_x_at	-1.21	2e-16	3e-13	10 x 44 small nuclear ribonucleoprotein polypeptide N [Source:HGNC Symbol;Acc:HGNC:1631]
5	206373_at	3.23	2e-16	3e-13	19 x 21 Zic family member 1 [Source:HGNC Symbol;Acc:HGNC:1287]
6	206461_x_at	-1.39	2e-16	3e-13	0 x 1 metallothionein 1H [Source:HGNC Symbol;Acc:HGNC:7400]
7	206742_at	1.98	2e-16	3e-13	19 x 21 vascular endothelial growth factor D [Source:HGNC Symbol;Acc:HGNC:1631]
8	209374_s_at	-1.5	2e-16	3e-13	0 x 22 immunoglobulin heavy constant mu [Source:HGNC Symbol;Acc:HGNC:1631]
9	211430_s_at	1	2e-16	3e-13	0 x 4 immunoglobulin heavy constant gamma 2 (G2m marker) [Source:HGNC Symbol;Acc:HGNC:1631]
10	212827_at	-1.91	2e-16	3e-13	41 x 44 immunoglobulin heavy constant mu [Source:HGNC Symbol;Acc:HGNC:1631]
11	213831_at	-1.29	2e-16	3e-13	49 x 16 major histocompatibility complex, class II, DQ alpha 1 [Source:HGNC Symbol;Acc:HGNC:1631]
12	214768_x_at	2.33	2e-16	3e-13	10 x 5 immunoglobulin kappa variable 2-28 [Source:HGNC Symbol;Acc:HGNC:1631]
13	215049_x_at	-1.81	2e-16	3e-13	8 x 10 CD163 molecule [Source:HGNC Symbol;Acc:HGNC:1631]
14	216853_x_at	2.04	2e-16	3e-13	11 x 5 immunoglobulin lambda variable 3-19 [Source:HGNC Symbol;Acc:HGNC:1631]
15	217469_at	2.37	2e-16	3e-13	49 x 20 immunoglobulin heavy constant epsilon [Source:HGNC Symbol;Acc:HGNC:1631]
16	220105_at	2.23	2e-16	3e-13	8 x 19 radial spoke head 14 homolog [Source:HGNC Symbol;Acc:HGNC:1631]
17	220595_at	2.14	2e-16	3e-13	27 x 49 PDZ domain containing ring finger 4 [Source:HGNC Symbol;Acc:HGNC:1631]
18	221651_x_at	0.82	2e-16	3e-13	0 x 3 immunoglobulin kappa constant [Source:HGNC Symbol;Acc:HGNC:1631]
19	203290_at	1.68	2e-15	2e-11	7 x 0 major histocompatibility complex, class II, DQ alpha 2 [Source:HGNC Symbol;Acc:HGNC:1631]
20	214836_x_at	0.98	2e-15	1e-10	0 x 3

Global Geneset Analysis

Rank	GSZ	p-value	#all	Geneset
<i>Overexpressed</i>				
1	11.57	NULL	3796	TF ICGC_Nficc81335_targets
2	11.02	NULL	3451	TF ICGC_Atf2_targets
3	10.77	NULL	4278	TF ICGC_Yyf1_targets
4	10.73	NULL	3564	TF ICGC_Taf1_targets
5	10.5	NULL	4319	TF ICGC_Pou2_targets
6	10.49	NULL	3703	TF ICGC_Foxm1_targets
7	10.43	NULL	3420	TF ICGC_Bclaf101388_targets
8	10.39	NULL	4602	TF ICGC_Elf1_targets
9	10.33	NULL	4851	TF ICGC_Runx3_targets
10	10.26	NULL	2899	TF ICGC_Nfatc1_targets
11	10.25	NULL	4212	TF ICGC_Pol2_targets
12	10.23	NULL	3769	TF ICGC_Pmlsc71910_targets
13	10.15	NULL	4072	TF ICGC_Mta3_targets
14	10.13	NULL	3608	TF ICGC_Tcf12_targets
15	10.11	NULL	3630	TF ICGC_Sp1_targets
16	10.09	NULL	11	CC immunoglobulin complex, circulating
17	9.95	NULL	3213	TF ICGC_Pu1_targets
18	9.87	NULL	3121	TF ICGC_Egr1_targets
19	9.65	NULL	1508	TF ICGC_Mef2_targets
20	9.58	NULL	3804	TF ICGC_Stat5_targets
<i>Underexpressed</i>				
1	-11.43	NULL	382	Chr Chr 15
2	-9.09	NULL	102	ReferenceSignature B-cells
3	-9	NULL	71	Melanoma
4	-7.29	NULL	17	GSEA C2ZHENG_Response_to_Arsenite_UP
5	-7.14	NULL	11	BP peptidoglycan binding
6	-7.11	NULL	14	BP negative regulation of growth
7	-7.07	NULL	37	BP toll-like receptor signaling pathway
8	-7.05	NULL	233	GSEA C2PENG_Rapamycin_Response_DN
9	-6.93	NULL	67	GSEA C2NAKAYAMA_Soft_Tissue_Tumors_PCA1_UP
10	-6.68	NULL	47	GSEA C2LIAN_LIPA_Targets_3M
11	-6.67	NULL	42	Immunonigelova_immune-metogene-TGD
12	-6.37	NULL	223	GSEA C2MCLACHLAN_Dental_Caries_UP
13	-6.27	NULL	72	ReferenceSignature 3.1_Interferon-inducible
14	-6.16	NULL	60	GSEA C2LIAN_LIPA_Targets_6M
15	-5.89	NULL	386	GSEA C2RUTELLA_Response_to_HGF_VS_CSF2RB_AND_IL4_UP
16	-5.75	NULL	14	BP cellular response to zinc ion
17	-5.69	NULL	30	GSEA C2APPEL_Imatinib_Response
18	-5.65	NULL	589	Colon Cancerbccke_TCGA-expr_kmeans_E_CIMP_H_UP_Cluster4_DN
19	-5.64	NULL	52	PneumoniaBurnham_day1_vs_5_DN
20	-5.64	NULL	153	GSEA C2CHIANG_Liver_Cancer_Subclass_Unannotated_DN

Portrait

Regulated Metagenes



p-values

