

# MPI-040

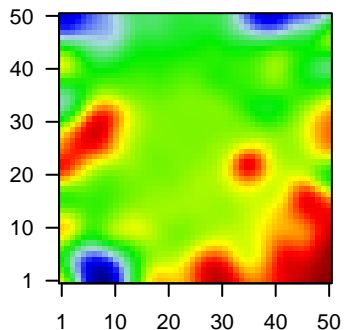
## Global Summary

%DE = 0.05  
 # genes with  $fdr < 0.2$  = 502 ( 164 + / 338 -)  
 # genes with  $fdr < 0.1$  = 355 ( 110 + / 245 -)  
 # genes with  $fdr < 0.05$  = 260 ( 79 + / 181 -)  
 # genes with  $fdr < 0.01$  = 168 ( 47 + / 121 -)

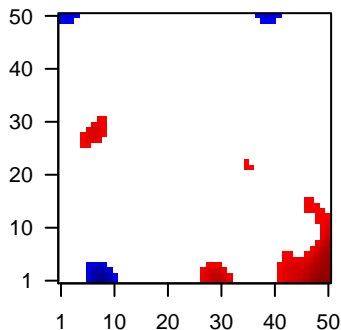
# genes in genesets = 13152

<FC> = 0  
 <t-score> = -0.23  
 <p-value> = 0.27  
 <fdr> = 0.95

### Portrait



### Regulated Metagenes



## Global Genelist

| Rank | ID          | log(FC) | fdr   | Description |  |
|------|-------------|---------|-------|-------------|--|
|      |             | p-value |       | Metagene    |  |
| 1    | 203795_s_at | -2.54   | 2e-16 | 9e-13       | 42 x 49 BCL tumor suppressor 7A [Source:HGNC Symbol;Acc:HGNC:10044]                              |
| 2    | 204489_s_at | -1.86   | 2e-16 | 9e-13       | 0 x 4 CD44 molecule (Indian blood group) [Source:HGNC Symbol;Acc:HGNC:10044]                     |
| 3    | 204581_at   | -2.12   | 2e-16 | 9e-13       | 49 x 41 CD22 molecule [Source:HGNC Symbol;Acc:HGNC:1643]   |
| 4    | 204951_at   | -1.66   | 2e-16 | 9e-13       | 0 x 34 ras homolog family member H [Source:HGNC Symbol;Acc:HGNC:10044]                           |
| 5    | 210258_at   | -1.77   | 2e-16 | 9e-13       | 49 x 40 regulator of G protein signaling 13 [Source:HGNC Symbol;Acc:HGNC:10044]                  |
| 6    | 209374_s_at | 1.22    | 1e-14 | 3e-10       | 0 x 22 immunoglobulin heavy constant mu [Source:HGNC Symbol;Acc:HGNC:10044]                      |
| 7    | 201259_s_at | -1.35   | 3e-14 | 3e-10       | 8 x 45 synaptophysin like 1 [Source:HGNC Symbol;Acc:HGNC:1156]                                   |
| 8    | 204429_s_at | -2.03   | 4e-14 | 1e-09       | 0 x 49 solute carrier family 2 member 5 [Source:HGNC Symbol;Acc:HGNC:10044]                      |
| 9    | 214677_x_at | 1.02    | 1e-13 | 2e-09       | 41 x 42 immunoglobulin lambda constant 2 [Source:HGNC Symbol;Acc:HGNC:10044]                     |
| 10   | 213548_s_at | -1.65   | 2e-13 | 2e-09       | 0 x 49 CDV3 homolog [Source:HGNC Symbol;Acc:HGNC:26928]  |
| 11   | 217422_s_at | -1.64   | 3e-13 | 2e-08       | 49 x 20 CD22 molecule [Source:HGNC Symbol;Acc:HGNC:1643]   |
| 12   | 216379_x_at | -1.26   | 2e-12 | 2e-08       | 44 x 49 CD24 molecule [Source:HGNC Symbol;Acc:HGNC:1645]   |
| 13   | 203936_s_at | -1.15   | 2e-12 | 2e-08       | 5 x 3 matrix metalloproteinase 9 [Source:HGNC Symbol;Acc:HGNC:10044]                             |
| 14   | 209771_x_at | -1.24   | 3e-12 | 2e-08       | 44 x 49 CD24 molecule [Source:HGNC Symbol;Acc:HGNC:1645]   |
| 15   | 266_s_at    | -1.74   | 3e-12 | 2e-08       | 44 x 49 CD24 molecule [Source:HGNC Symbol;Acc:HGNC:1645]   |
| 16   | 208650_s_at | -1.56   | 4e-12 | 2e-08       | 44 x 49 CD24 molecule [Source:HGNC Symbol;Acc:HGNC:1645]   |
| 17   | 204141_at   | -1.73   | 5e-12 | 1e-07       | 46 x 49 tubulin beta 2A class IIa [Source:HGNC Symbol;Acc:HGNC:10044]                            |
| 18   | 219517_at   | -1.38   | 1e-11 | 1e-07       | 49 x 41  |
| 19   | 212560_at   | -1.44   | 2e-11 | 1e-07       | 49 x 40 sortilin related receptor 1 [Source:HGNC Symbol;Acc:HGNC:10044]                          |
| 20   | 203290_at   | 2.09    | 2e-11 | 2e-07       | 7 x 0 major histocompatibility complex, class II, DQ alpha 2 [Source:HGNC Symbol;Acc:HGNC:10044] |

## Global Geneset Analysis

| Rank                  | GSZ    | p-value | #all | Geneset   |
|-----------------------|--------|---------|------|---|
| <i>Overexpressed</i>  |        |         |      |   |
| 1                     | 12.74  | NULL    | 18   | CC MHC class II protein complex   |
| 2                     | 12.73  | NULL    | 17   | BP antigen processing and presentation of peptide or polysaccharide antigen fragments |
| 3                     | 10.95  | NULL    | 12   | MF MHC class II receptor activity   |
| 4                     | 10.27  | NULL    | 77   | LymphomBARTe_Plasma cell signature  |
| 5                     | 10.03  | NULL    | 75   | GSEA C2TARTE_PLASMA_CELL_VS_B_LYMPHOCYTE_UP   |
| 6                     | 8.99   | NULL    | 23   | CC integral component of luminal side of endoplasmic reticulum membrane               |
| 7                     | 8.75   | NULL    | 40   | GSEA C2FARMER_BREAST_CANCER_CLUSTER_1   |
| 8                     | 8.66   | NULL    | 40   | BP antigen processing and presentation  |
| 9                     | 8.48   | NULL    | 51   | CC ER to Golgi transport vesicle membrane   |
| 10                    | 7.99   | NULL    | 32   | ReferenceC2SIGNATURE_1_1_Plasma Cells   |
| 11                    | 7.76   | NULL    | 2254 | ChromatinRepPC_MSC_Adipocyte  |
| 12                    | 7.27   | NULL    | 683  | CC endoplasmic reticulum membrane   |
| 13                    | 7.16   | NULL    | 36   | CC transport vesicle membrane   |
| 14                    | 6.95   | NULL    | 2867 | ChromatinRepPC_MSC_Adipocyte  |
| 15                    | 6.66   | NULL    | 57   | PneumonBurnham_viral_UP   |
| 16                    | 6.63   | NULL    | 2148 | ChromatinRepPC_Skeletal_Muscle  |
| 17                    | 6.62   | NULL    | 60   | BP T cell costimulation   |
| 18                    | 6.57   | NULL    | 72   | ReferenceC2SIGNATURE_3_1_Interferon-inducible   |
| 19                    | 6.49   | NULL    | 28   | CC clathrin-coated endocytic vesicle membrane   |
| 20                    | 6.49   | NULL    | 12   | Cancer_HLA2_signature   |
| <i>Underexpressed</i> |        |         |      |   |
| 1                     | -14.1  | NULL    | 214  | LymphomBARTe_Stromal signature 1  |
| 2                     | -12.72 | NULL    | 966  | GSEA C2KINSEY_TARGETS_OF_EWSR1_FLII_FUSION_UP   |
| 3                     | -12.58 | NULL    | 466  | GSEA C2BERENJENO_TRANSFORMED_BY_RHOA_UP   |
| 4                     | -11.78 | NULL    | 244  | GSEA C2KOBAYASHI_EGFR_SIGNALING_24HR_DN   |
| 5                     | -11.38 | NULL    | 726  | GSEA C2PUJANA_CHEK2_PCC_NETWORK   |
| 6                     | -11.15 | NULL    | 8918 | ChromatinRepPC_MSC_Adipocyte  |
| 7                     | -11.13 | NULL    | 431  | GSEA C2SOBERT_OLIGODENDROCYTE_DIFFERENTIATION_UP                                      |
| 8                     | -10.91 | NULL    | 319  | MelanomBerber_wt/melanoma-cells-SpotA   |
| 9                     | -10.79 | NULL    | 8275 | ChromatinRepPC_Fibroblasts  |
| 10                    | -10.73 | NULL    | 187  | HM_HALLMARK_E2F_TARGETS   |
| 11                    | -10.69 | NULL    | 176  | GSEA C2PICCALUGA_ANGIOIMMUNOBLASTIC_LYMPHOMA_UP                                       |
| 12                    | -10.58 | NULL    | 9179 | ChromatinRepPC_Skeletal_Muscle  |
| 13                    | -10.55 | NULL    | 8641 | ChromatinRepPC_ESC_Endoderm   |
| 14                    | -10.54 | NULL    | 7225 | ChromatinRepPC_fetal_midbrain_ReprPC  |
| 15                    | -10.38 | NULL    | 340  | GSEA C2RHEIN_ALL_GLUCOCORTICOID_THERAPY_DN  |
| 16                    | -10.38 | NULL    | 703  | GSEA C2LEE_BMP2_TARGETS_DN  |
| 17                    | -10.29 | NULL    | 1527 | GSEA C2PUJANA_BRCA1_PCC_NETWORK   |
| 18                    | -10.26 | NULL    | 1052 | GSEA C2DODD_NASOPHARYNGEAL_CARCINOMA_DN   |
| 19                    | -10.25 | NULL    | 9576 | ChromatinRepPC_MSC_Adipocyte  |
| 20                    | -10.18 | NULL    | 8766 | ChromatinRepPC_Melanocytes  |

### p-values

