

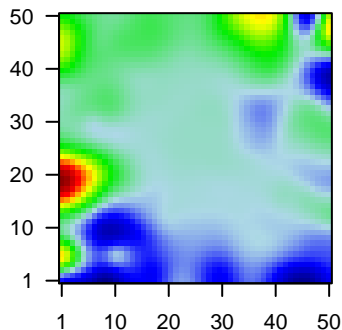
MPI-015

Global Summary

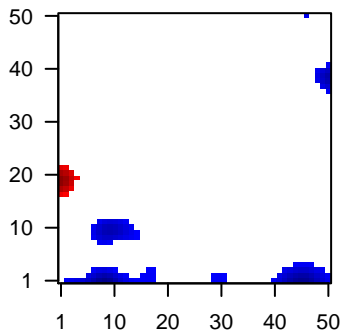
%DE = 0.04
 # genes with fdr < 0.2 = 620 (353 + / 267 -)
 # genes with fdr < 0.1 = 464 (275 + / 189 -)
 # genes with fdr < 0.05 = 323 (194 + / 129 -)
 # genes with fdr < 0.01 = 223 (146 + / 77 -)
 # genes in genesets = 13152

<FC> = 0
 <t-score> = 0.16
 <p-value> = 0.26
 <fdr> = 0.96

Portrait



Regulated Metagenes



Global Genelist

Rank	ID	log(FC)	fdr	p-value	Description
1	AFFX-HUMR	2.51	2e-16	4e-13	49 x 47 microRNA 3687-2 [Source:HGNC Symbol;Acc:HGNC:50835]
2	AFFX-HUMR	2.09	2e-16	4e-13	49 x 47
3	AFFX-r2-Hs1	2.29	2e-16	4e-13	49 x 47
4	AFFX-r2-Hs1	2	2e-16	4e-13	49 x 47
5	AFFX-r2-Hs1	2.88	2e-16	4e-13	49 x 47
6	208579_x_at	1.15	2e-16	4e-13	0 x 20 histone cluster 1 H2B family member k [Source:HGNC Symb
7	208792_s_at	1.21	2e-16	4e-13	0 x 3 clusterin [Source:HGNC Symbol;Acc:HGNC:2095]
8	209398_at	1.6	2e-16	4e-13	0 x 20 histone cluster 1 H1 family member c [Source:HGNC Symbol
9	209806_at	1.02	2e-16	4e-13	0 x 20
10	211430_s_at	0.92	2e-16	4e-13	0 x 4 immunoglobulin heavy constant gamma 2 (G2m marker) [Sou
11	211656_x_at	-1.67	2e-16	4e-13	2 x 9 major histocompatibility complex, class II, DQ beta 1 [Source:
12	214290_s_at	1.05	2e-16	4e-13	0 x 21 histone cluster 2 H2A family member a3 [Source:HGNC Symb
13	218186_at	1.92	2e-16	4e-13	0 x 17 RAB25, member RAS oncogene family [Source:HGNC Symb
14	220635_at	1.9	7e-16	8e-12	4 x 19 psoriasis susceptibility 1 candidate 2 [Source:HGNC Symbol;
15	208791_at	1.28	2e-15	8e-12	0 x 3 clusterin [Source:HGNC Symbol;Acc:HGNC:2095]
16	213753_x_at	-1.12	2e-15	8e-12	40 x 39 eukaryotic translation initiation factor 5A [Source:HGNC Symb
17	201347_x_at	0.86	2e-15	1e-11	0 x 17 glyoxylate and hydroxyypyruvate reductase [Source:HGNC Symb
18	201839_s_at	1.87	2e-15	1e-11	1 x 19 epithelial cell adhesion molecule [Source:HGNC Symbol;Acc:
19	209116_x_at	-1.26	3e-15	2e-11	6 x 29 hemoglobin subunit beta [Source:HGNC Symbol;Acc:HGNC:
20	AFFX-HUMR	1.85	4e-15	1e-10	49 x 47

Global Geneset Analysis

Rank	GSZ	p-value	#all	Geneset
<i>Overexpressed</i>				
1	12.37	NULL	42	GSEA C2REACTOME_RNA_POL_I_PROMOTER_OPENING
2	12.15	NULL	756	Chr Chr 11
3	11.39	NULL	36	GSEA C2REACTOME_PACKAGING_OF_TELOMERE_ENDS
4	10.91	NULL	62	GSEA C2REACTOME_MEIOTIC_RECOMBINATION
5	10.79	NULL	46	GSEA C2REACTOME_DEPOSITION_OF_NEW_CENPA_CONTAINING_NU
6	10.78	NULL	62	GSEA C2REACTOME_RNA_POL_I_TRANSCRIPTION
7	10.44	NULL	85	LymphomaDLBCL UP
8	9.99	NULL	61	GSEA C2REACTOME_TELOMERE_MAINTENANCE
9	9.9	NULL	70	CC nucleosome
10	9.84	NULL	18	LymphomaWRIGHT_ABC UP
11	9.73	NULL	7833	ChromatinPeripheral blood_1_TssA
12	9.65	NULL	91	GSEA C2REACTOME_RNA_POL_I_RNA_POL_III_AND_MITOCHONDRIA
13	9.48	NULL	44	MF antigen binding
14	9.32	NULL	60	GSEA C2REACTOME_AMYLOIDS
15	9.29	NULL	88	GSEA C2REACTOME_MEIOSIS
16	9.05	NULL	3767	ChromatinPeripheral blood_6_EnhG
17	9.02	NULL	4261	LymphomaOPP_Txn_transition
18	8.97	NULL	57	GSEA C2REACTOME_MEIOTIC_SYNAPSIS
19	8.71	NULL	164	GSEA C2REACTOME_TRANSCRIPTION
20	8.55	NULL	8406	ChromatinPeripheral blood_2_TssAFink
<i>Underexpressed</i>				
1	-9.69	NULL	335	GSEA C2SCHUETZ_BREAST_CANCER_DUCTAL_INVASIVE_UP
2	-8.77	NULL	2405	ChromatinPeripheral blood_13_ReprPC
3	-8.43	NULL	3001	ChromatinPeripheral blood_14_ReprPCWk
4	-8.18	NULL	3734	ChromatinPeripheral blood_13_ReprPC
5	-8.08	NULL	63	GSEA C2ANASTASSIOU_CANCER_MESENCHYMAL_TRANSITION_SIGN
6	-8.03	NULL	47	GSEA C2LIAN_LIPA_TARGETS_3M
7	-7.7	NULL	60	GSEA C2LIAN_LIPA_TARGETS_6M
8	-7.62	NULL	42	GSEA C2HUMMEL_BURKITT'S_LYMPHOMA_UP
9	-7.49	NULL	67	GSEA C2NAKAYAMA_SOFT_TISSUE_TUMORS_PCA1_UP
10	-7.39	NULL	12	MF MHC class II receptor activity
11	-7.2	NULL	589	Colon Cancerbckc_TCGA-expr_kmeans_E_CIMP.H_UP_Cluster4_DN
12	-7.13	NULL	3168	LymphomaOPP_Repressed
13	-7.1	NULL	17	BP antigen processing and presentation of peptide or polysaccharide
14	-6.95	NULL	71	MelanomaTirosh_Macrophage specific genes-melanoma
15	-6.89	NULL	3918	ChromatinPeripheral blood_14_ReprPCWk
16	-6.8	NULL	132	Colon Cancerisa_CRC-cluster-a
17	-6.77	NULL	18	CC MHC class II protein complex
18	-6.57	NULL	138	GSEA C2/ECCHI_GASTRIC_CANCER_ADVANCED_VS_EARLY_UP
19	-6.53	NULL	109	ReferenceDataset_2_6_Myeloid lineage
20	-6.49	NULL	2535	ChromatinGSEs_naive cells peripheral blood_14_ReprPCWk

p-values

