

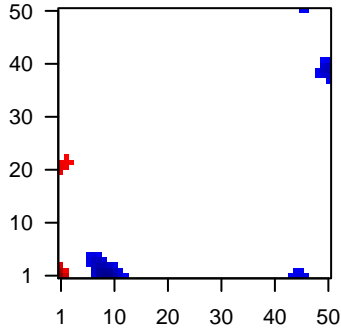
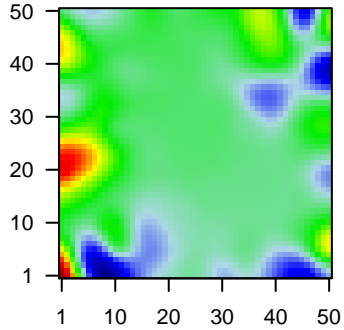
# MPI-013

## Global Summary

%DE = 0.05  
 # genes with  $fdr < 0.2$  = 542 ( 295 + / 247 -)  
 # genes with  $fdr < 0.1$  = 358 ( 193 + / 165 -)  
 # genes with  $fdr < 0.05$  = 315 ( 173 + / 142 -)  
 # genes with  $fdr < 0.01$  = 188 ( 101 + / 87 -)  
  
 # genes in genesets = 13152  
  
 $\langle FC \rangle = 0$   
 $\langle -score \rangle = 0.11$   
 $\langle p-value \rangle = 0.26$   
 $\langle fdr \rangle = 0.95$

Portrait

Regulated Metagenes



## Global Genelist

Rank	ID	log(FC)	fdr p-value	Description
1	201123_s_at	-1.19	2e-16 4e-13	1 x 43 eukaryotic translation initiation factor 5A [Source:HGNC Syml
2	201141_at	-1.21	2e-16 4e-13	6 x 4 glycoprotein nmb [Source:HGNC Symbol;Acc:HGNC:4462]
3	201850_at	-1.78	2e-16 4e-13	4 x 3 capping actin protein, gelsolin like [Source:HGNC Symbol;Acc
4	203936_s_at	-2.08	2e-16 4e-13	5 x 3 matrix metalloproteinase 9 [Source:HGNC Symbol;Acc:HGNC
5	204416_x_at	-2.3	2e-16 4e-13	5 x 3 apolipoprotein C1 [Source:HGNC Symbol;Acc:HGNC:607]
6	206881_s_at	2.22	2e-16 4e-13	4 x 20 leukocyte immunoglobulin like receptor A3 [Source:HGNC Sy
7	209924_at	-1.05	2e-16 4e-13	20 x 49 C-C motif chemokine ligand 18 [Source:HGNC Symbol;Acc:t
8	210095_s_at	-1.72	2e-16 4e-13	10 x 1 insulin like growth factor binding protein 3 [Source:HGNC Syr
9	212884_x_at	-0.98	2e-16 4e-13	5 x 3 apolipoprotein E [Source:HGNC Symbol;Acc:HGNC:613]
10	213553_x_at	-1.66	2e-16 4e-13	5 x 2 apolipoprotein C1 [Source:HGNC Symbol;Acc:HGNC:607]
11	213831_at	-1.8	2e-16 4e-13	49 x 16 major histocompatibility complex, class II, DQ alpha 1 [Source
12	214777_at	2.28	2e-16 4e-13	10 x 5 immunoglobulin kappa variable 4-1 [Source:HGNC Symbol;A
13	220423_at	-2.01	2e-16 4e-13	2 x 3 phospholipase A2 group IID [Source:HGNC Symbol;Acc:HGNC
14	219360_s_at	2.02	7e-16 5e-12	0 x 20 transient receptor potential cation channel subfamily M memt
15	32128_at	-1	9e-16 3e-11	20 x 49 C-C motif chemokine ligand 18 [Source:HGNC Symbol;Acc:t
16	206134_at	-1.2	9e-16 3e-11	3 x 3 ADAM like decysin 1 [Source:HGNC Symbol;Acc:HGNC:162
17	216442_x_at	-1.01	3e-15 3e-11	8 x 0 fibronectin 1 [Source:HGNC Symbol;Acc:HGNC:3778]
18	203381_s_at	-0.89	6e-15 3e-11	5 x 6 apolipoprotein E [Source:HGNC Symbol;Acc:HGNC:613]
19	39318_at	1.03	6e-15 3e-11	46 x 49 T cell leukemia/lymphoma 1A [Source:HGNC Symbol;Acc:HC
20	203382_s_at	-0.92	6e-15 3e-11	5 x 4 apolipoprotein E [Source:HGNC Symbol;Acc:HGNC:613]

## Global Geneset Analysis

Rank	GSZ	p-value	#all	Geneset
<i>Overexpressed</i>				
1	12.99	NULL	3564	TF ICGC_Taf1_targets
2	12.58	NULL	166	HM HALLMARK_INTERFERON_GAMMA_RESPONSE
3	12.22	NULL	102	Reference:GSE44126 B-cells
4	12.16	NULL	3769	TF ICGC_Pmlsc71910_targets
5	11.69	NULL	4072	TF ICGC_Mta3_targets
6	11.23	NULL	4319	TF ICGC_Pou2_targets
7	10.75	NULL	4278	TF ICGC_Yy1_targets
8	10.7	NULL	3150	TF ICGC_Creb1_targets
9	10.6	NULL	4264	TF ICGC_Pax5_targets
10	10.59	NULL	4212	TF ICGC_Pol2_targets
11	10.55	NULL	3608	TF ICGC_Tcf12_targets
12	10.52	NULL	4602	TF ICGC_Eif1_targets
13	10.51	NULL	3804	TF ICGC_Stat5_targets
14	10.42	NULL	3796	TF ICGC_Nficsc81335_targets
15	10.38	NULL	3451	TF ICGC_Atf2_targets
16	10.08	NULL	2899	TF ICGC_Nfatc1_targets
17	9.96	NULL	3630	TF ICGC_Sp1_targets
18	9.92	NULL	44	MF antigen binding
19	9.88	NULL	3420	TF ICGC_Bclaf101388_targets
20	9.6	NULL	1578	TF ICGC_GabpPcr2_targets
<i>Underexpressed</i>				
1	-12.85	NULL	214	Lymphoma:ENZ_Stromal signature 1
2	-8.35	NULL	3734	Chromatin:scell_peripheral blood_13_ReprPC
3	-8.34	NULL	63	GSEA C2:ANASTASSIOU_CANCER_MESENCHYMAL_TRANSITION_SIGN
4	-8	NULL	138	GSEA C2:ECCHI_GASTRIC_CANCER_ADVANCED_VS_EARLY_UP
5	-7.96	NULL	3168	Lymphoma:OPP_Repressed
6	-7.93	NULL	3724	Chromatin:scell_peripheral blood_12_EnhBiv
7	-7.76	NULL	2765	Chromatin:scell_treg_peripheral blood_13_ReprPC
8	-7.68	NULL	2194	Chromatin:scell_treg_peripheral blood_12_EnhBiv
9	-7.65	NULL	132	Colon:CaMarsa_CRC-cluster-a
10	-7.6	NULL	2602	Chromatin:scell_treg_killer cells peripheral blood_12_EnhBiv
11	-7.56	NULL	2300	Chromatin:scell_treg_killer cells peripheral blood_13_ReprPC
12	-7.46	NULL	2515	Chromatin:scell_treg_killer cells peripheral blood_13_ReprPC
13	-7.45	NULL	4	Glioma: Martinez_Glio_hypometh
14	-7.27	NULL	2134	Chromatin:scell_treg_peripheral blood_12_EnhBiv
15	-7.25	NULL	12	CC chylomicron
16	-7.21	NULL	212	CC extracellular matrix
17	-6.99	NULL	1894	Lymphoma:OPP_Poised_promoter
18	-6.98	NULL	3918	Chromatin:scell_peripheral blood_14_ReprPCWk
19	-6.96	NULL	1660	Chromatin:scell_treg_naive cells peripheral blood_12_EnhBiv
20	-6.84	NULL	60	GSEA C2:TURASHVILI_BREAST_LOBULAR_CARCINOMA_VS_LOBULAR

p-values

