

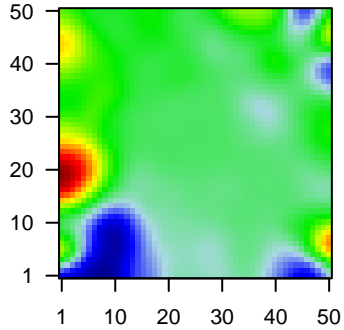
MPI-012

Global Summary

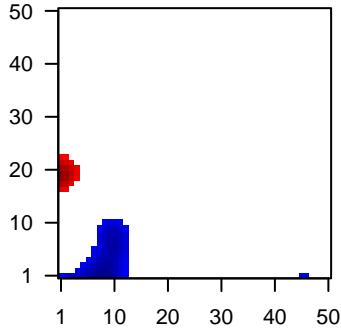
%DE = 0.07
 # genes with fdr < 0.2 = 890 (439 + / 451 -)
 # genes with fdr < 0.1 = 659 (340 + / 319 -)
 # genes with fdr < 0.05 = 523 (267 + / 256 -)
 # genes with fdr < 0.01 = 383 (186 + / 197 -)
 # genes in genesets = 13152

<FC> = 0
 <t-score> = -0.01
 <p-value> = 0.21
 <fdr> = 0.93

Portrait



Regulated Metagenes



Global Genelist

Rank	ID	log(FC)	fdr	p-value	Description
1	201137_s_at	-1.09	2e-16	1e-13	1 x 10 major histocompatibility complex, class II, DP beta 1 [Source:HGNC Symbol;Acc:HGNC:25589]
2	201307_at	-1.48	2e-16	1e-13	42 x 28 septin 11 [Source:HGNC Symbol;Acc:HGNC:25589]
3	201522_x_at	-1.23	2e-16	1e-13	29 x 6 small nuclear ribonucleoprotein polypeptide N [Source:HGNC Symbol;Acc:HGNC:25589]
4	204416_x_at	-1.16	2e-16	1e-13	5 x 3 apolipoprotein C1 [Source:HGNC Symbol;Acc:HGNC:607]
5	204529_s_at	-1.61	2e-16	1e-13	3 x 6 thymocyte selection associated high mobility group box [Source:HGNC Symbol;Acc:HGNC:25589]
6	206042_x_at	-1.75	2e-16	1e-13	10 x 44 small nuclear ribonucleoprotein polypeptide N [Source:HGNC Symbol;Acc:HGNC:25589]
7	206059_at	-1.79	2e-16	1e-13	49 x 22 zinc finger protein 91 [Source:HGNC Symbol;Acc:HGNC:1311]
8	206413_s_at	2.29	2e-16	1e-13	43 x 49 T cell leukemia/lymphoma 1B [Source:HGNC Symbol;Acc:HGNC:25589]
9	207534_at	2.07	2e-16	1e-13	1 x 16 MAGE family member B1 [Source:HGNC Symbol;Acc:HGNC:25589]
10	209138_x_at	-1.33	2e-16	1e-13	41 x 42 immunoglobulin lambda constant 2 [Source:HGNC Symbol;Acc:HGNC:25589]
11	209670_at	-1.33	2e-16	1e-13	10 x 9 T cell receptor alpha constant [Source:HGNC Symbol;Acc:HGNC:25589]
12	209671_x_at	-1.53	2e-16	1e-13	10 x 9 T cell receptor alpha constant [Source:HGNC Symbol;Acc:HGNC:25589]
13	209846_s_at	-1.53	2e-16	1e-13	10 x 10 butyrophilin subfamily 3 member A2 [Source:HGNC Symbol;Acc:HGNC:25589]
14	210546_x_at	2.33	2e-16	1e-13	10 x 27 cancer/testis antigen 1A [Source:HGNC Symbol;Acc:HGNC:25589]
15	210915_x_at	-1.33	2e-16	1e-13	10 x 8 T cell receptor beta constant 1 [Source:HGNC Symbol;Acc:HGNC:25589]
16	210972_x_at	-1.58	2e-16	1e-13	10 x 9 T cell receptor alpha constant [Source:HGNC Symbol;Acc:HGNC:25589]
17	211644_x_at	1.95	2e-16	1e-13	0 x 1 immunoglobulin kappa variable 3-20 [Source:HGNC Symbol;Acc:HGNC:25589]
18	211654_x_at	-0.96	2e-16	1e-13	1 x 9 major histocompatibility complex, class II, DQ beta 1 [Source:HGNC Symbol;Acc:HGNC:25589]
19	211674_x_at	2.39	2e-16	1e-13	10 x 27 cancer/testis antigen 1A [Source:HGNC Symbol;Acc:HGNC:25589]
20	211725_s_at	-1.72	2e-16	1e-13	5 x 16 BH3 interacting domain death agonist [Source:HGNC Symbol;Acc:HGNC:25589]

Global Geneset Analysis

Rank	GSZ	p-value	#all	Geneset
<i>Overexpressed</i>				
1	13.17	NULL	7833	Chromatin state 1
2	12.64	NULL	3767	Chromatin state 2
3	12.44	NULL	8406	Chromatin state 3
4	11.9	NULL	7165	Chromatin state 4
5	11.77	NULL	5716	Chromatin state 5
6	11.66	NULL	4261	Lymphonotranscriptome peripheral blood_4_Tx
7	11.02	NULL	3564	TF ICGC_Taf1_targets
8	10.93	NULL	3150	TF ICGC_Creb1_targets
9	10.84	NULL	2994	TF ICGC_Zeb1_targets
10	10.78	NULL	3420	TF ICGC_Bclaf101388_targets
11	10.67	NULL	3769	TF ICGC_Pmlsc71910_targets
12	10.65	NULL	8200	Chromatin state 6
13	10.58	NULL	7635	Chromatin state 7
14	10.58	NULL	6798	Chromatin state 8
15	10.47	NULL	3804	TF ICGC_Stat5_targets
16	10.34	NULL	7957	Chromatin state 9
17	10.27	NULL	4602	TF ICGC_Elf1_targets
18	10.27	NULL	8245	Chromatin state 10
19	10.21	NULL	5620	Chromatin state 11
20	10.19	NULL	3121	TF ICGC_Egr1_targets
<i>Underexpressed</i>				
1	-15.67	NULL	214	Lymphonotranscriptome ENZ_Stromal signature 1
2	-13.71	NULL	17	BP antigen processing and presentation of peptide or polysaccharide antigen fragments
3	-13.16	NULL	18	CC MHC class II protein complex
4	-12.85	NULL	176	GSEA C2PCCALUGA_ANGIOIMMUNOBLASTIC_LYMPHOMA_UP
5	-10.91	NULL	12	MF MHC class II receptor activity
6	-10.53	NULL	335	GSEA C2SCHUETZ_BREAST_CANCER_DUCTAL_INVASIVE_UP
7	-10	NULL	1611	CC extracellular region
8	-9.72	NULL	102	Reference transcriptome B-cells
9	-9.5	NULL	15	Lymphonotranscriptome Polarized immune response
10	-9.41	NULL	97	Lymphonotranscriptome OSOLOWSKI_red total
11	-9.28	NULL	62	Lymphonotranscriptome Monti_Host_response_cluster
12	-9.25	NULL	40	BP antigen processing and presentation
13	-9.17	NULL	23	CC integral component of luminal side of endoplasmic reticulum membrane
14	-9.1	NULL	63	GSEA C2ANASTASSIOU_CANCER_MESENCHYMAL_TRANSITION_SIGN
15	-8.7	NULL	196	HM HALLMARK_EPITHELIAL_MESENCHYMAL_TRANSITION
16	-8.68	NULL	1090	CC extracellular space
17	-8.64	NULL	56	Pneumonotranscriptome burnham_sep_vs_con_DN
18	-8.55	NULL	336	BP immune response
19	-8.5	NULL	247	GSEA C2BOQUEST_STEM_CELL_UP
20	-8.49	NULL	28	CC clathrin-coated endocytic vesicle membrane

p-values

