

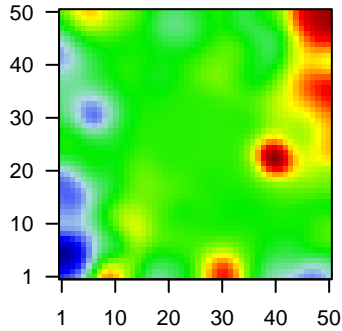
MPI-006

Global Summary

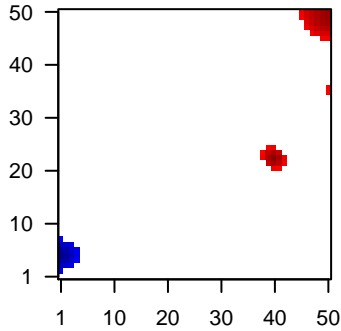
%DE = 0.05
 # genes with fdr < 0.2 = 750 (356 + / 394 -)
 # genes with fdr < 0.1 = 572 (273 + / 299 -)
 # genes with fdr < 0.05 = 446 (214 + / 232 -)
 # genes with fdr < 0.01 = 322 (159 + / 163 -)
 # genes in genesets = 13152

<FC> = 0
 <t-score> = -0.18
 <p-value> = 0.23
 <fdr> = 0.95

Portrait



Regulated Metagenes



Global Genelist

Rank	ID	log(FC)	fdr	p-value	Description
1	AFFX-r2-Hs1	2.88	2e-16	2e-13	49 x 47
2	202391_at	-1.28	2e-16	2e-13	2 x 15 brain abundant membrane attached signal protein 1 [Source:HGNC Symbol;Acc:HGNC:1703]
3	204362_at	-1.5	2e-16	2e-13	0 x 13 src kinase associated phosphoprotein 2 [Source:HGNC Symbol;Acc:HGNC:1703]
4	204440_at	-1.52	2e-16	2e-13	0 x 8 CD83 molecule [Source:HGNC Symbol;Acc:HGNC:1703]
5	205242_at	-2.12	2e-16	2e-13	0 x 3 C-X-C motif chemokine ligand 13 [Source:HGNC Symbol;Acc:HGNC:1703]
6	205681_at	-1.84	2e-16	2e-13	0 x 4 BCL2 related protein A1 [Source:HGNC Symbol;Acc:HGNC:1703]
7	206126_at	-1.85	2e-16	2e-13	1 x 17 C-X-C motif chemokine receptor 5 [Source:HGNC Symbol;Acc:HGNC:1703]
8	206513_at	-1.9	2e-16	2e-13	1 x 8 absent in melanoma 2 [Source:HGNC Symbol;Acc:HGNC:1703]
9	206660_at	2.79	2e-16	2e-13	45 x 49 immunoglobulin lambda like polypeptide 1 [Source:HGNC Symbol;Acc:HGNC:1703]
10	207777_s_at	-1.93	2e-16	2e-13	0 x 18 SP140 nuclear body protein [Source:HGNC Symbol;Acc:HGNC:1703]
11	210258_at	-2.3	2e-16	2e-13	49 x 40 regulator of G protein signaling 13 [Source:HGNC Symbol;Acc:HGNC:1703]
12	210487_at	2.85	2e-16	2e-13	39 x 22 DNA nucleotidyltransferase [Source:HGNC Symbol;Acc:HGNC:1703]
13	211699_x_at	-1.68	2e-16	2e-13	6 x 29 hemoglobin subunit alpha 2 [Source:HGNC Symbol;Acc:HGNC:1703]
14	214669_x_at	-1.55	2e-16	2e-13	0 x 3
15	216840_s_at	2.51	2e-16	2e-13	39 x 22 laminin subunit alpha 2 [Source:HGNC Symbol;Acc:HGNC:1703]
16	219648_at	-1.85	2e-16	2e-13	4 x 3 melanoregulin [Source:HGNC Symbol;Acc:HGNC:25478]
17	220389_at	2.51	2e-16	2e-13	39 x 22 coiled-coil domain containing 81 [Source:HGNC Symbol;Acc:HGNC:25478]
18	221349_at	2.76	2e-16	2e-13	44 x 49 V-set pre-B cell surrogate light chain 1 [Source:HGNC Symbol;Acc:HGNC:25478]
19	221651_x_at	-1.41	2e-16	2e-13	0 x 3 immunoglobulin kappa constant [Source:HGNC Symbol;Acc:HGNC:25478]
20	221671_x_at	-1.58	2e-16	2e-13	0 x 3 immunoglobulin kappa constant [Source:HGNC Symbol;Acc:HGNC:25478]

Global Geneset Analysis

Rank	GSZ	p-value	#all	Geneset
<i>Overexpressed</i>				
1	16.84	NULL	275	GSEA C2HADDAD_B_LYMPHOCYTE_PROGENITOR
2	12.72	NULL	2325	Chromatin state 4_ZNF_Rpts
3	11.06	NULL	4683	Chromatin state 4_fetal_midbrain_HetRpts
4	10.64	NULL	2626	Chromatin state 4_ZNF_Rpts_ESC_Mesoderm
5	10.63	NULL	3554	Chromatin state 4_ZNF_Rpts_ESC_Endoderm
6	10.21	NULL	6244	Chromatin state 4_ZNF_Rpts_Fibroblasts
7	10.21	NULL	6099	Chromatin state 4_ZNF_Tx
8	10.13	NULL	5456	Chromatin state 4_ZNF_Neural_Progenitor
9	10.01	NULL	3007	Chromatin state 4_ZNF_Neural_Progenitor
10	9.64	NULL	6389	Chromatin state 4_ZNF_ESC_Mesoderm
11	9.42	NULL	7225	Chromatin state 4_fetal_midbrain_ReprPC
12	9.33	NULL	6034	Chromatin state 4_ZNF_Fibroblasts
13	9.28	NULL	340	GSEA C2RHEIN_ALL_GLUCCORTICOID_THERAPY_DN
14	9.04	NULL	6466	Chromatin state 4_ZNF_ESC_Adipocyte
15	8.64	NULL	830	GSEA C2DACOSTA_UV_RESPONSE_VIA_ERCC3_DN
16	8.6	NULL	7066	Chromatin state 4_fetal_midbrain_ReprPCWk
17	8.5	NULL	1025	Chromatin state 4_ZNF_cells_peripheral_blood_8_ZNF_Rpts
18	8.33	NULL	6643	Chromatin state 4_ZNF_Skeletal_Muscle
19	8.22	NULL	6679	Chromatin state 4_ZNF_Melanocytes
20	8.13	NULL	1480	Chromatin state 4_ZNF_MSC_Adipocyte
<i>Underexpressed</i>				
1	-13.4	NULL	589	Colon Cancer_bcbcke_TCGA-expr_kmeans_E_CIMP.H_UP_Cluster4_DN
2	-13.05	NULL	85	Lymphoma_bha_DLCL UP
3	-12.04	NULL	223	GSEA C2MCLACHLAN_DENTAL_CARIES_UP
4	-11.9	NULL	22	Lymphoma_BAVE_NFkB BL DN
5	-10.76	NULL	166	GSEA C2VERHAAK_AML_WITH_NPM1_MUTATED_UP
6	-10.64	NULL	219	GSEA C2MCLACHLAN_DENTAL_CARIES_DN
7	-10.17	NULL	447	Glioma_ScoV_0.999_Sturm_E4_Mesenchymal_RTK_I_PDGFR_A_DN
8	-10.03	NULL	317	Cancer_SPANG_BCL6-index2
9	-9.59	NULL	71	Melanoma_Tirosh_Macrophage_specific_genes-melanoma
10	-9.59	NULL	194	GSEA C2JAATINEN_HEMATOPOIETIC_STEM_CELL_DN
11	-9.1	NULL	480	Cancer_Lembcke_Colonc Inflammation
12	-9.1	NULL	213	Lymphoma_SPANG_IL21 DN
13	-8.61	NULL	55	GSEA C2DIRMEIER_LMP1_RESPONSE_LATE_UP
14	-8.52	NULL	404	GSEA C2RUTELLA_RESPONSE_TO_HGF_UP
15	-8.38	NULL	14	GSEA C2HUMMEL_BURKITT'S_LYMPHOMA_DN
16	-8.19	NULL	176	HM_HALLMARK_ALLOGRAFT_REJECTION
17	-8.17	NULL	190	HM_HALLMARK_TNFA_SIGNALING_VIA_NFKB
18	-7.79	NULL	51	GSEA C2MORI_LARGE_PRE_BIL_LYMPHOCYTE_DN
19	-7.78	NULL	90	GSEA C2BASSO_CD40_SIGNALING_UP
20	-7.78	NULL	12	Lymphoma_BENTINK_mBL DOWN

p-values

