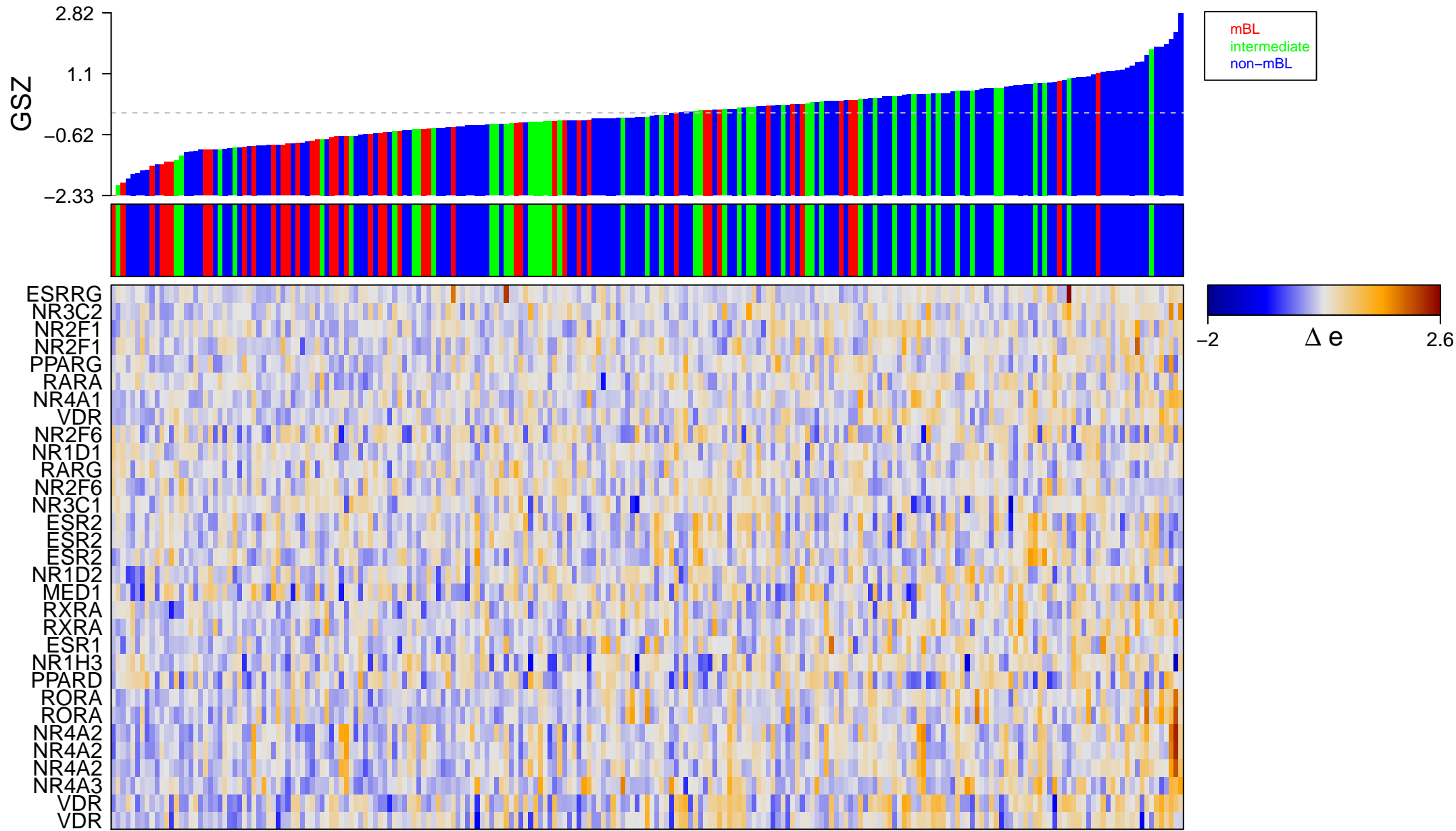
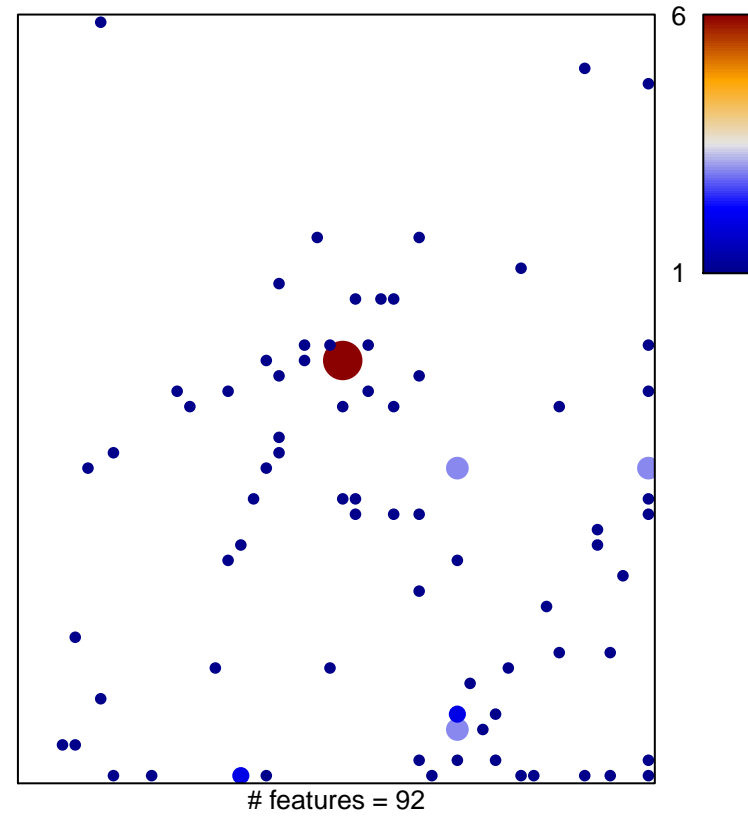
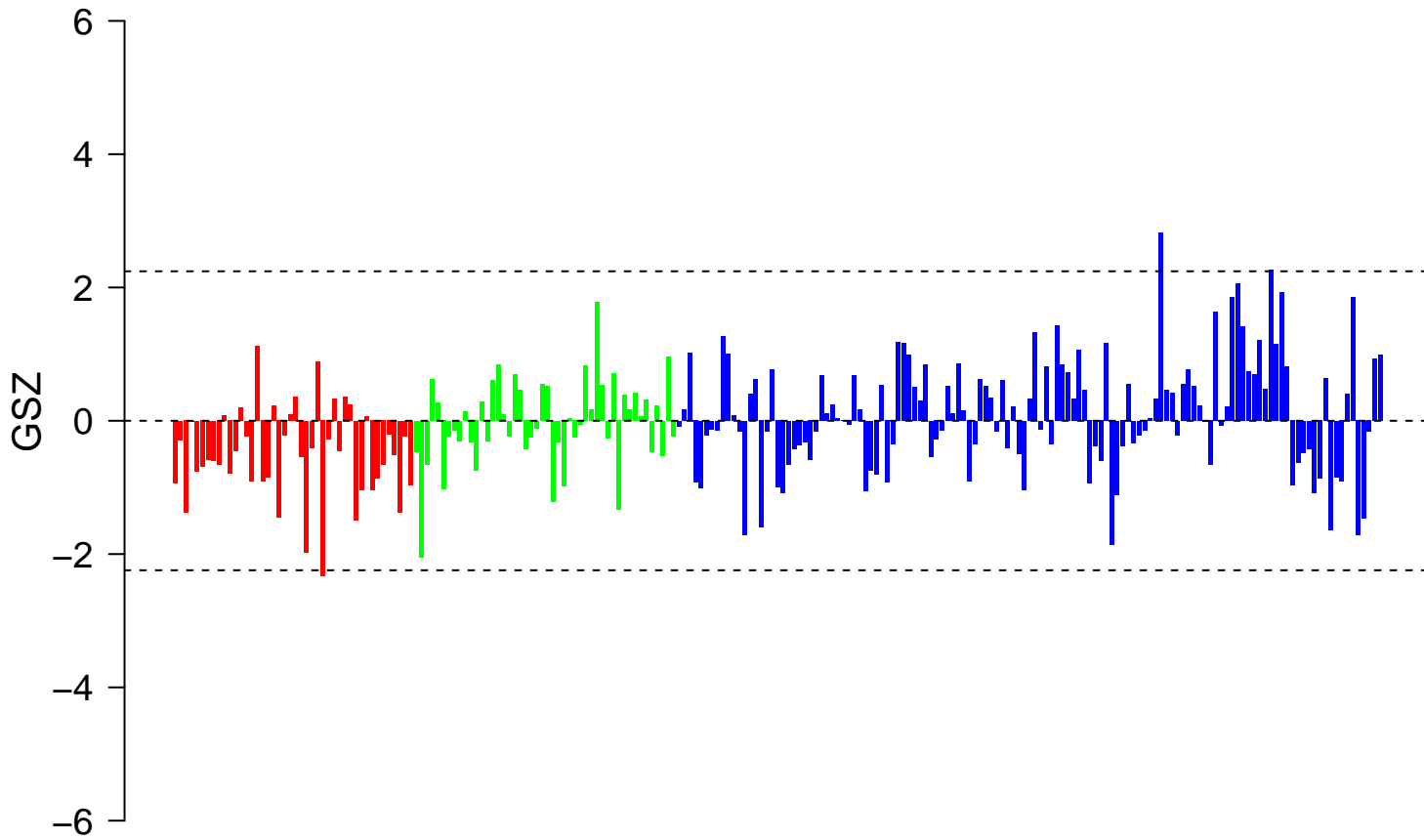


REACTOME_NUCLEAR_RECEPTOR_TRANSCRIPTION_PATHWAY



REACTOME_NUCLEAR_RECEPTOR_TRANSCRIPTION_PATHWAY



■ on
■ -
□ off



REACTOME_NUCLEAR_RECEPTOR_TRANSCRIPTION_PATHWAY

