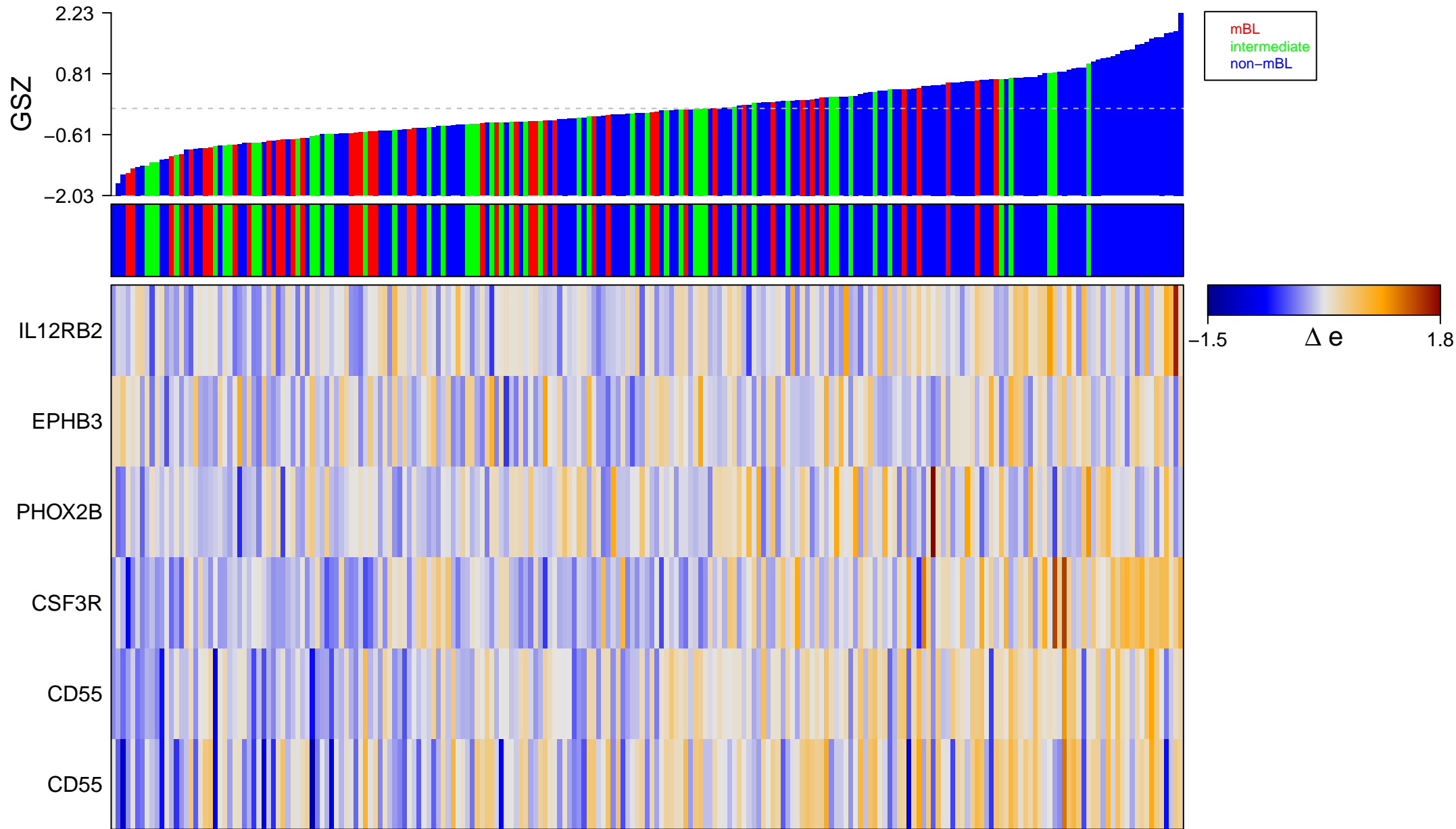
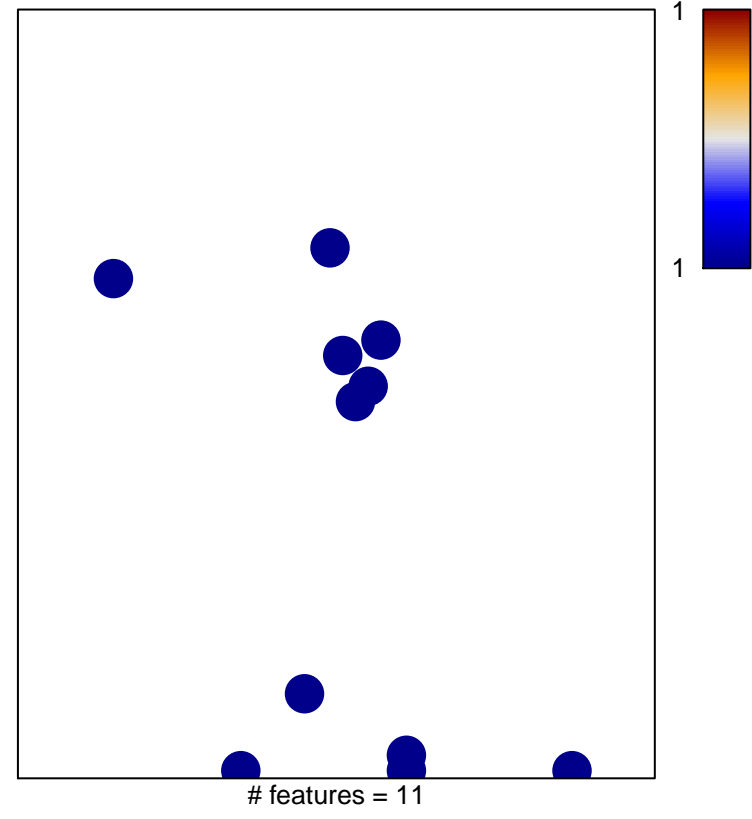
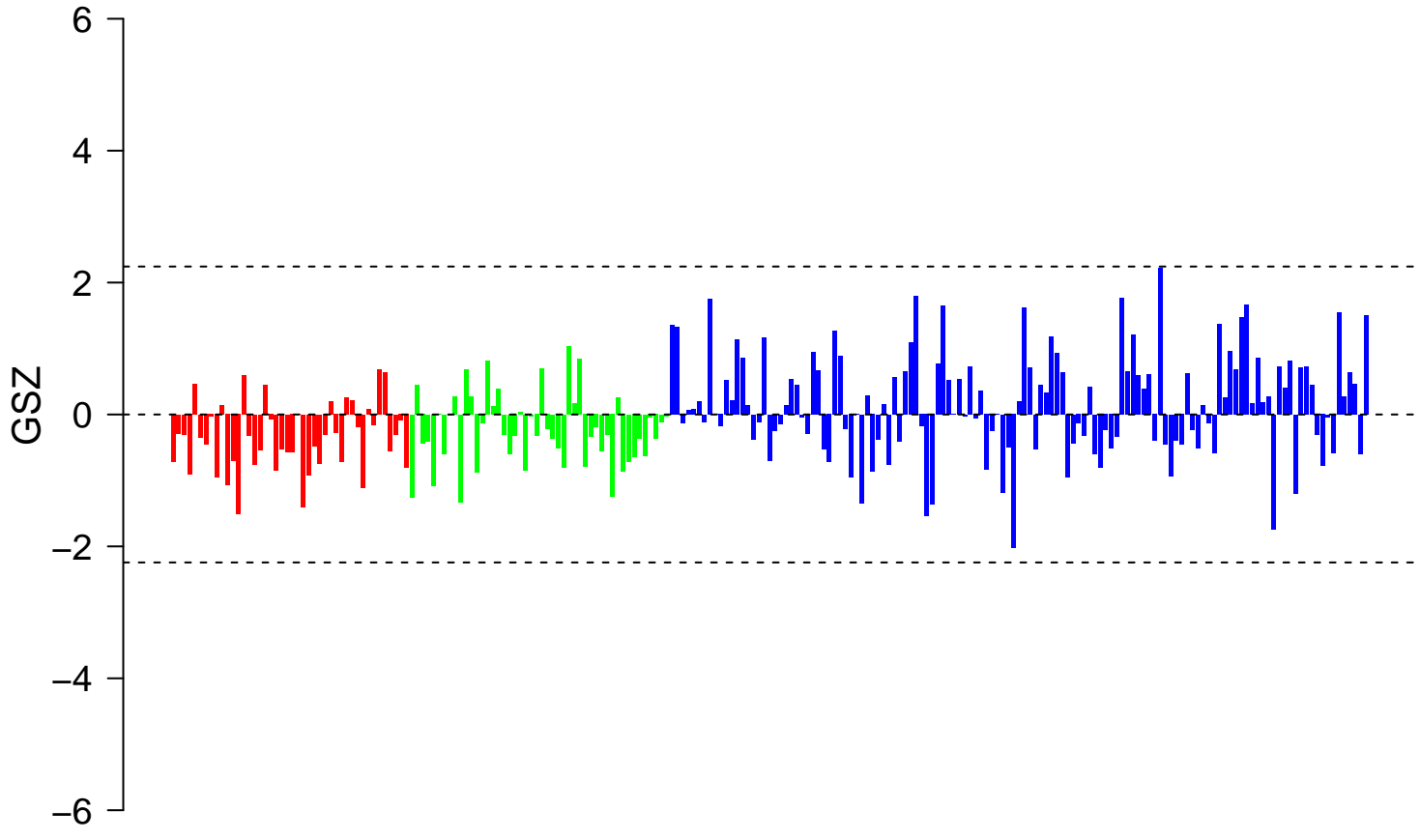


BYSTRYKH_HEMATOPOIESIS_STEM_CELL_RUNX1



BYSTRYKH_HEMATOPOIESIS_STEM_CELL_RUNX1



Legend for feature states:

- on
- -
- off

A long gray rectangular bar representing the state of 11 features. The bar is solid gray, indicating that all features are in the 'on' state.

BYSTRYKH_HEMATOPOIESIS_STEM_CELL_RUNX1

