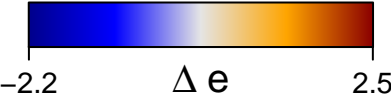


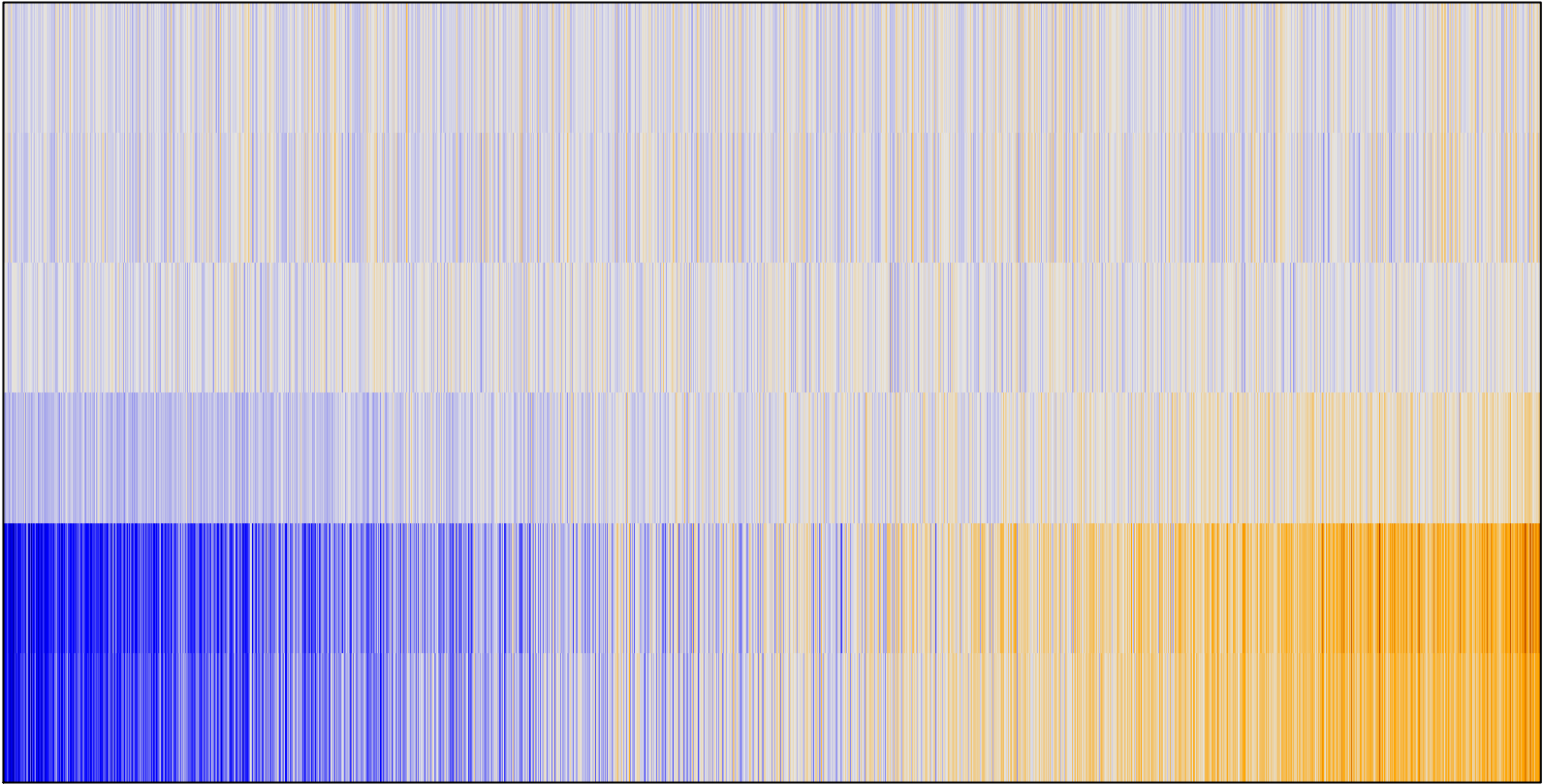
excitatory postsynaptic potential

GSZ
3.49
1.09
-1.31
-3.71

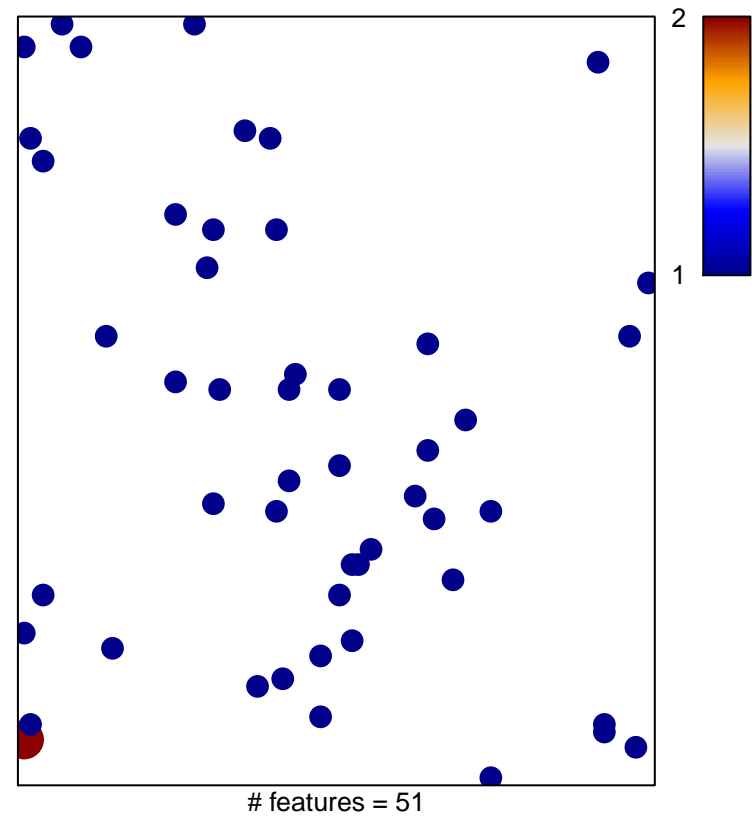
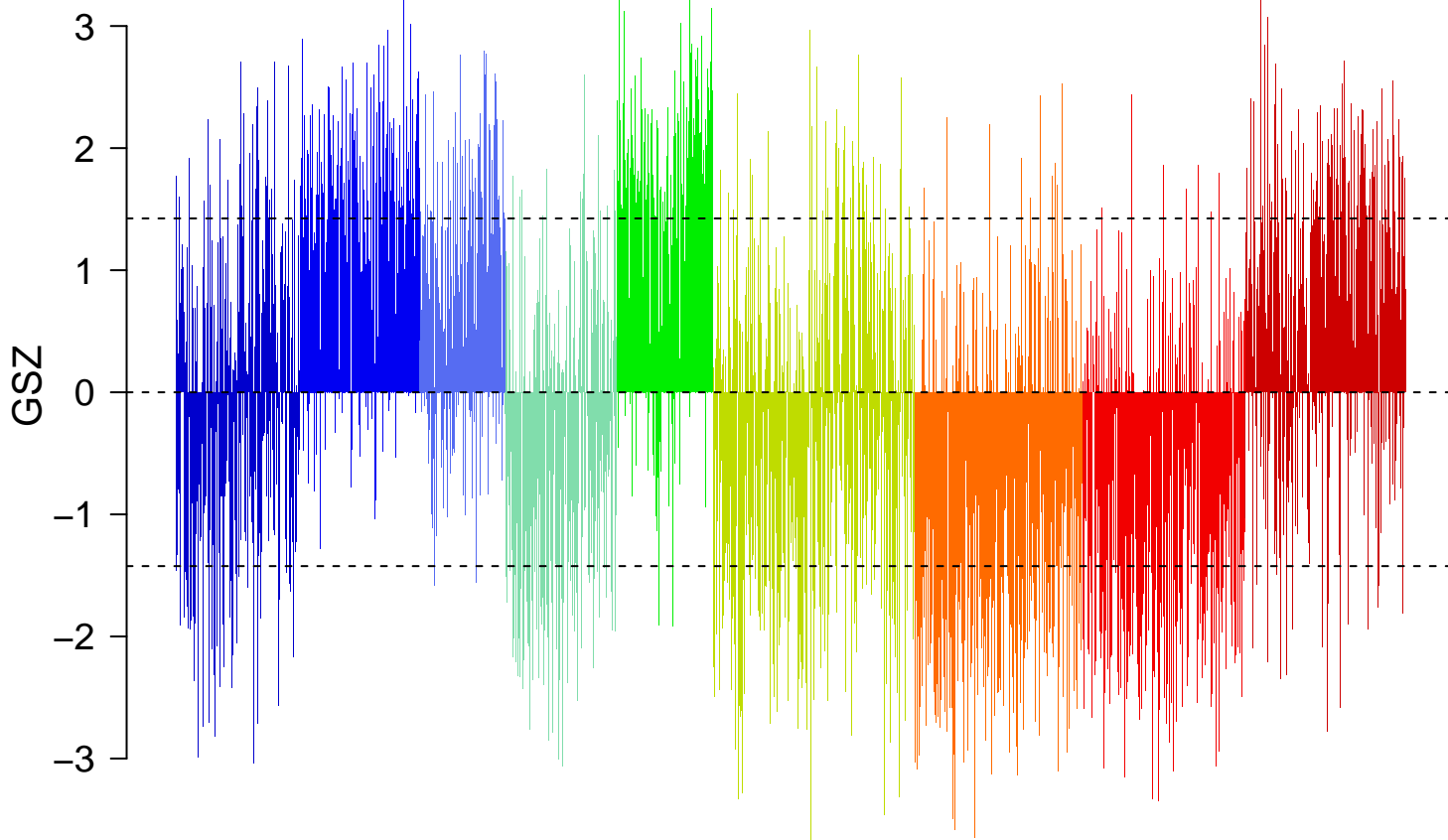
- A*
- AC*
- ACF*
- AF*
- F*
- FJ*
- J*
- N*



SLC29A1
SLC29A1
ADORA2A
ADORA1
SNCA
SNCA



excitatory postsynaptic potential



excitatory postsynaptic potential

