

31206E

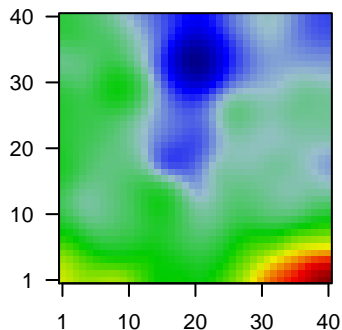
Global Summary

%DE = 0.05
 # genes with fdr < 0.2 = 1657 (991 + / 666 -)
 # genes with fdr < 0.1 = 1109 (667 + / 442 -)
 # genes with fdr < 0.05 = 848 (513 + / 335 -)
 # genes with fdr < 0.01 = 505 (305 + / 200 -)

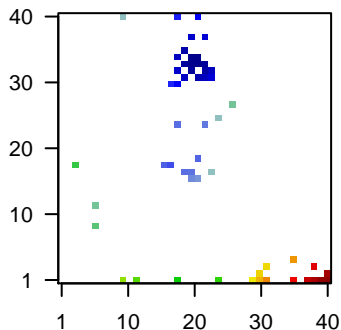
 # genes in genesets = 16360

<FC> = 0
 <t-score> = 0.15
 <p-value> = 0.26
 <fdr> = 0.95

Portrait



Top 100 DE genes



Global Genelist

Rank	ID	log(FC)	fdr	p-value	Description
1	201909_at	1.28	2e-16	9e-13	18 x 1 ribosomal protein S4 Y-linked 1 [Source:HGNC Symbol;Acc:HGNC:10000]
2	202350_s_at	-0.81	2e-16	9e-13	18 x 24 matrilin 2 [Source:HGNC Symbol;Acc:HGNC:6908]
3	203797_at	1.05	2e-16	9e-13	40 x 1 visinin like 1 [Source:HGNC Symbol;Acc:HGNC:12722]
4	203973_s_at	-0.98	2e-16	9e-13	22 x 37 CCAAT enhancer binding protein delta [Source:HGNC Symbol;Acc:HGNC:10000]
5	204472_at	-1.11	2e-16	9e-13	22 x 31 GTP binding protein overexpressed in skeletal muscle [Source:HGNC Symbol;Acc:HGNC:10000]
6	205113_at	1.41	2e-16	9e-13	40 x 1 neurofilament medium [Source:HGNC Symbol;Acc:HGNC:7739]
7	206101_at	-1.31	2e-16	9e-13	21 x 31 extracellular matrix protein 2 [Source:HGNC Symbol;Acc:HGNC:10000]
8	216834_at	-1.08	2e-16	9e-13	21 x 31 regulator of G protein signaling 1 [Source:HGNC Symbol;Acc:HGNC:10000]
9	221805_at	1.21	2e-16	9e-13	40 x 1 neurofilament light [Source:HGNC Symbol;Acc:HGNC:7739]
10	221916_at	1.01	2e-16	9e-13	40 x 1 neurofilament light [Source:HGNC Symbol;Acc:HGNC:7739]
11	224588_at	-1.88	2e-16	9e-13	17 x 18 X inactive specific transcript [Source:HGNC Symbol;Acc:HGNC:10000]
12	227671_at	-1.82	2e-16	9e-13	17 x 18 X inactive specific transcript [Source:HGNC Symbol;Acc:HGNC:10000]
13	235059_at	2.19	2e-16	9e-13	10 x 40 RAB12, member RAS oncogene family [Source:HGNC Symbol;Acc:HGNC:10000]
14	204439_at	-0.86	1e-15	6e-11	23 x 31 interferon induced protein 44 like [Source:HGNC Symbol;Acc:HGNC:10000]
15	210095_s_at	-1.07	2e-15	6e-11	21 x 16 insulin like growth factor binding protein 3 [Source:HGNC Symbol;Acc:HGNC:10000]
16	206307_s_at	-1.4	3e-15	8e-11	20 x 32 forkhead box D1 [Source:HGNC Symbol;Acc:HGNC:3802]
17	202507_s_at	0.81	5e-15	2e-10	38 x 1 synaptosome associated protein 25 [Source:HGNC Symbol;Acc:HGNC:10000]
18	211811_s_at	1.61	1e-14	2e-10	3 x 18 protocadherin alpha 6 [Source:HGNC Symbol;Acc:HGNC:861]
19	203999_at	0.82	1e-14	6e-10	40 x 1 synaptotagmin 1 [Source:HGNC Symbol;Acc:HGNC:11509]
20	217130_at	1.59	3e-14	6e-10	31 x 1

Global Geneset Analysis

Rank	GSZ	p-value	#all	Geneset
<i>Overexpressed</i>				
1	15.43	NULL	574	BP synapse
2	11.96	NULL	236	BP chemical synaptic transmission
3	11.04	NULL	240	BP postsynaptic membrane
4	10.07	NULL	505	BP nervous system development
5	9.57	NULL	1435	BP mitochondrion
6	7.75	NULL	276	BP translation
7	7.24	NULL	627	BP ion transport
8	7.18	NULL	131	BP potassium ion transport
9	7.16	NULL	28	BP synaptic vesicle exocytosis
10	7.12	NULL	131	BP presynapse
11	7.04	NULL	27	BP glutamate secretion
12	6.81	NULL	27	BP gamma-aminobutyric acid signaling pathway
13	6.65	NULL	51	BP neurotransmitter secretion
14	6.63	NULL	13	BP synaptic transmission, GABAergic
15	6.59	NULL	122	BP potassium ion transmembrane transport
16	6.36	NULL	31	BP regulation of NMDA receptor activity
17	6.26	NULL	33	BP regulation of exocytosis
18	6.2	NULL	61	BP positive regulation of synapse assembly
19	6.19	NULL	149	BP regulation of ion transmembrane transport
20	6.19	NULL	36	BP synaptic vesicle endocytosis
<i>Underexpressed</i>				
1	-14.56	NULL	388	BP immune response
2	-14.06	NULL	564	BP immune system process
3	-10.91	NULL	364	BP inflammatory response
4	-10.68	NULL	417	BP innate immune response
5	-9.26	NULL	289	BP cytokine-mediated signaling pathway
6	-9.25	NULL	231	BP extracellular matrix organization
7	-8.89	NULL	17	BP antigen processing and presentation of peptide or polysaccharide antigens
8	-8.75	NULL	155	BP regulation of immune response
9	-8.05	NULL	43	BP antigen processing and presentation
10	-7.73	NULL	460	BP neutrophil degranulation
11	-7.43	NULL	13	BP immunoglobulin mediated immune response
12	-6.82	NULL	131	BP positive regulation of angiogenesis
13	-6.76	NULL	222	BP adaptive immune response
14	-6.58	NULL	184	BP defense response to virus
15	-6.5	NULL	151	BP defense response to bacterium
16	-6.47	NULL	152	BP leukocyte migration
17	-6.4	NULL	219	BP positive regulation of cell migration
18	-6.38	NULL	59	BP positive regulation of T cell proliferation
19	-6.26	NULL	151	BP cellular response to lipopolysaccharide
20	-6.13	NULL	47	BP complement activation

p-values

